



Grossmont Healthcare District

September 2018 Prop G Board Report



Reflection:

“Autumn is a second spring when every leaf is a flower.”

Albert Camus

Overview:

September 2018



1. Regulatory Compliance
2. H&V Level 1 Surgery Build Out
3. Helix Waterline Replacement
4. Schedule
5. Budget
6. Snapshot on Sharp HealthCare
7. Looking Ahead



Bi-Plane Cath Lab: Ready for inspection by CDPH

1. Regulatory Compliance:

September 2018

Project	Safety Event	Infection Control Breach	Notice of Non-Compliance
Level 1 Surgery Build Out	0	0	0 
Helix Waterline Replacement	0	0	0 

2. H&V Level 1 Surgery Build Out:

September 2018

- Schedule delays: 105.5 calendar days approved
- CDPH licensing visit requested September 4, 2018
- Claim from Swinerton Builders on behalf of Alpha Mechanical under negotiation
- All Change Orders processed
- Working with Swinerton Builders to resolve minor deficiencies

3. Helix Waterline Replacement:

September 2018

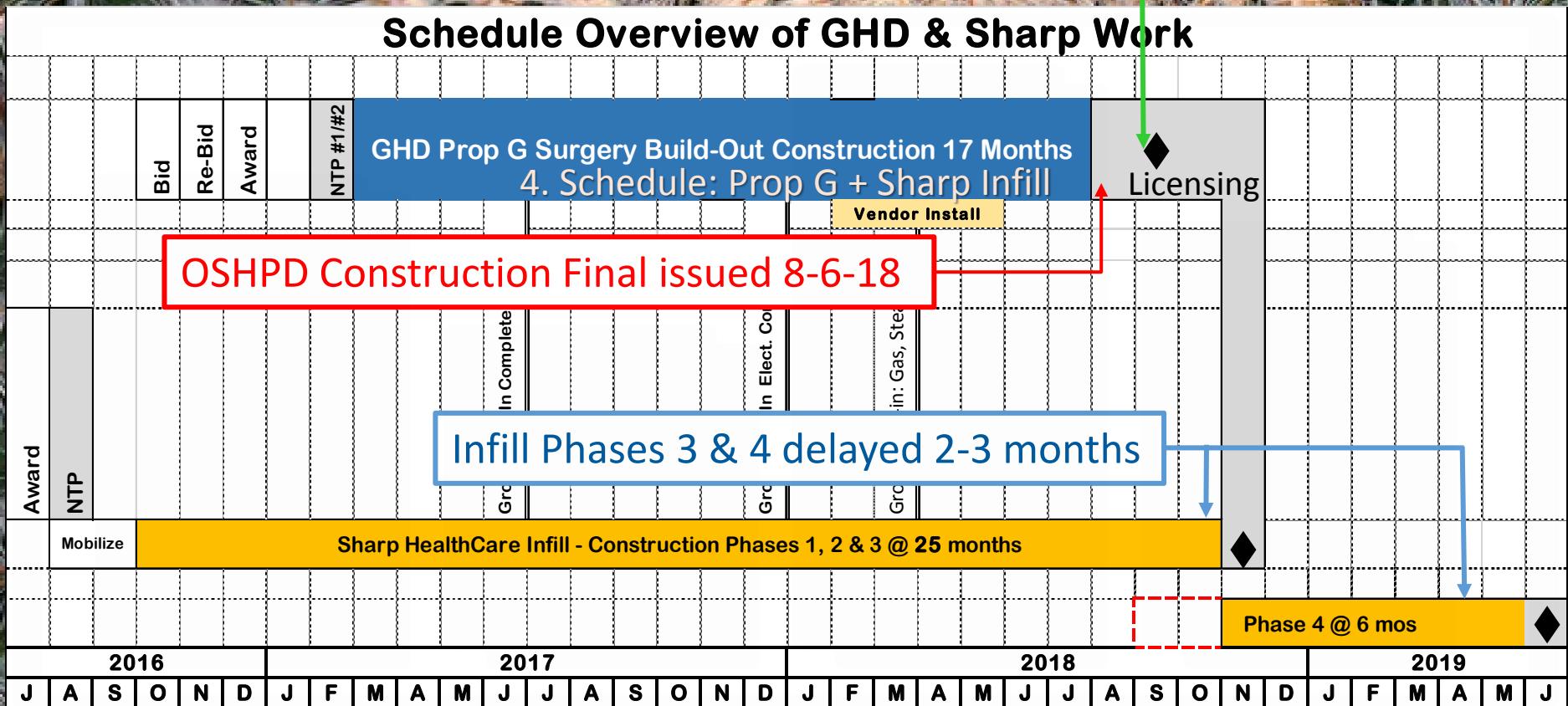
- **Budget:**
 - Currently \$300,000
- **Scope:**
 - Researching a shallower path of travel
 - HWD proposes to bid work to a short list of qualified bidders
- **Schedule:**
 - Restart of work will take place November 2018, to accommodate a Planned Outage for the SDG&E Hospital service & to minimize risk of an unplanned outage
 - Once restarted, the work should be completed in approximately 6 weeks

4. Schedule: Prop G + Sharp Infill:

September 2018

Requested CDPH Licensing inspection on 9-4-18, before Infill Phase 3 is completed

Schedule Overview of GHD & Sharp Work



5. Budget:

September 2018

Category	Project Name	Projected Cost At Completion (09/20/18)	Projected Cost At Completion (08/23/18)	Footnotes
Current Funds Available	Total Prop G Building Fund (Bond and Settlement Proceeds, Interest Earned, Grants, Etc.)	\$ 261,198,796	\$ 261,198,796	1
Projects Completed	Central Energy Plant, ED-CCU, Heart & Vascular Bldg, East Tower Renovation, Early Utilities	\$ 225,834,531	\$ 225,834,531	
	Remaining Prop G Building Funds	\$ 35,364,265	\$ 35,364,265	
Projects Under Construction	H&V Level 1 Surgery Floor Buildout	\$ 34,194,527	\$ 34,194,527	
	Forecast Potential Surplus	\$ 1,169,738	\$ 1,169,738	

Footnote:

1-Current funds Available includes interest/dividend earnings received for FY18 of \$216,253

6. Snapshot on Sharp HealthCare Infill Project:

September 2018

- Completing cut-over of existing final emergency electrical panel to new panels
- Installation of overhead utilities ongoing in new Lockers/Lounge
- Installation underway of 1-side drywall & door frames
- Experience Center & offices work is ongoing with installation of walls & utilities



Relocation – Electrical to new Panels

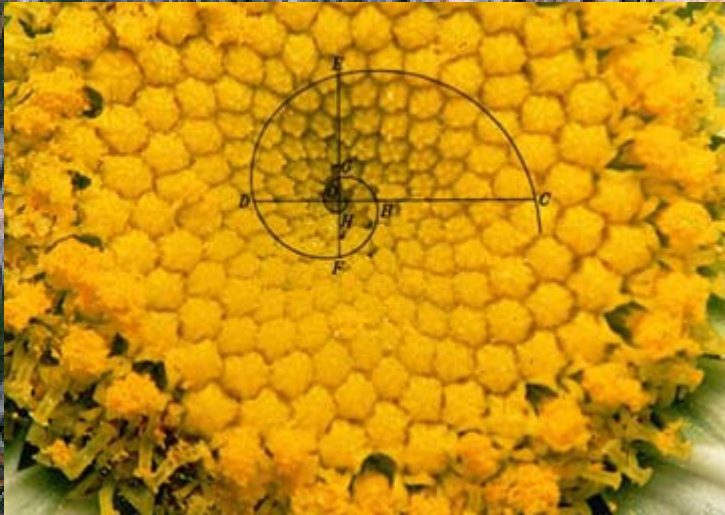


Installation – Overhead Duct & Utilities

7. Looking Ahead:

September 2018

- Finalize Contractor claims
- Resolve action plan for the Helix Waterline replacement, including:
 - Finalize route
 - Helix Water District to bid work to short-list of qualified Contractors
 - Coordinate start of work with Hospital & SDG&E, including scheduled shut down of the Hospital COGEN Plant and planned outage for SDG&E



Questions?