

Grossmont Healthcare District

A scenic view of a park area. In the foreground, a paved path curves through a grassy area. In the middle ground, a stone gazebo with several columns is surrounded by large trees. Some trees have vibrant red and orange foliage, while others are green. The background shows a clear blue sky and more trees.

January 2018 Prop G Board Report

A photograph of a white pergola structure on a golf course. The pergola is made of white metal beams and posts, forming a series of arches over a paved path. The path leads into the distance, flanked by green grass and trees. A green water fountain is visible on the right side of the path. The sky is blue with some clouds.

Reflection:

“It is only possible to live happily
ever after on a day-to-day basis.”

Margaret Bonnano

Overview

January 2018

1. Regulatory Compliance
2. H&V Level 1 Surgery Build Out
3. The plans:
 - i. Sharp Infill/Build Out
 - ii. Surgery Suite Overview
 - iii. Equipment Layout, OR #1029
 - iv. Equipment Plan, OR #1030
4. Schedule
5. Budget
6. Snapshot on Sharp HealthCare Infill Project
7. Looking Ahead



#1025, #1027:
Finishes 95% complete; preparing
for AE inspection

1. Regulatory Compliance

January 2018



East Corridor #1001: Field visit by OSHPD Area Compliance Officer on 1-3-2018

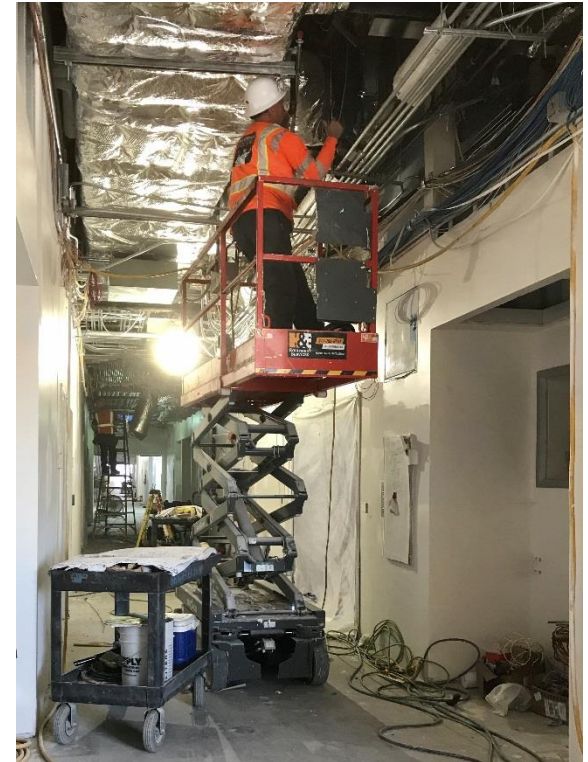
Project	Safety Event	Infection Control Breach	Notice of Non-Compliance
Level 1 Surgery Build Out	0	0	1

On 1-18-18 Swinerton was notified that the OR humidifier piping & components were not installed per the manufacturer's recommendations or Project Specifications. Swinerton is working with the sub-contractor to correct this issue.

2. H&V Level 1 Surgery Build Out

January 2018

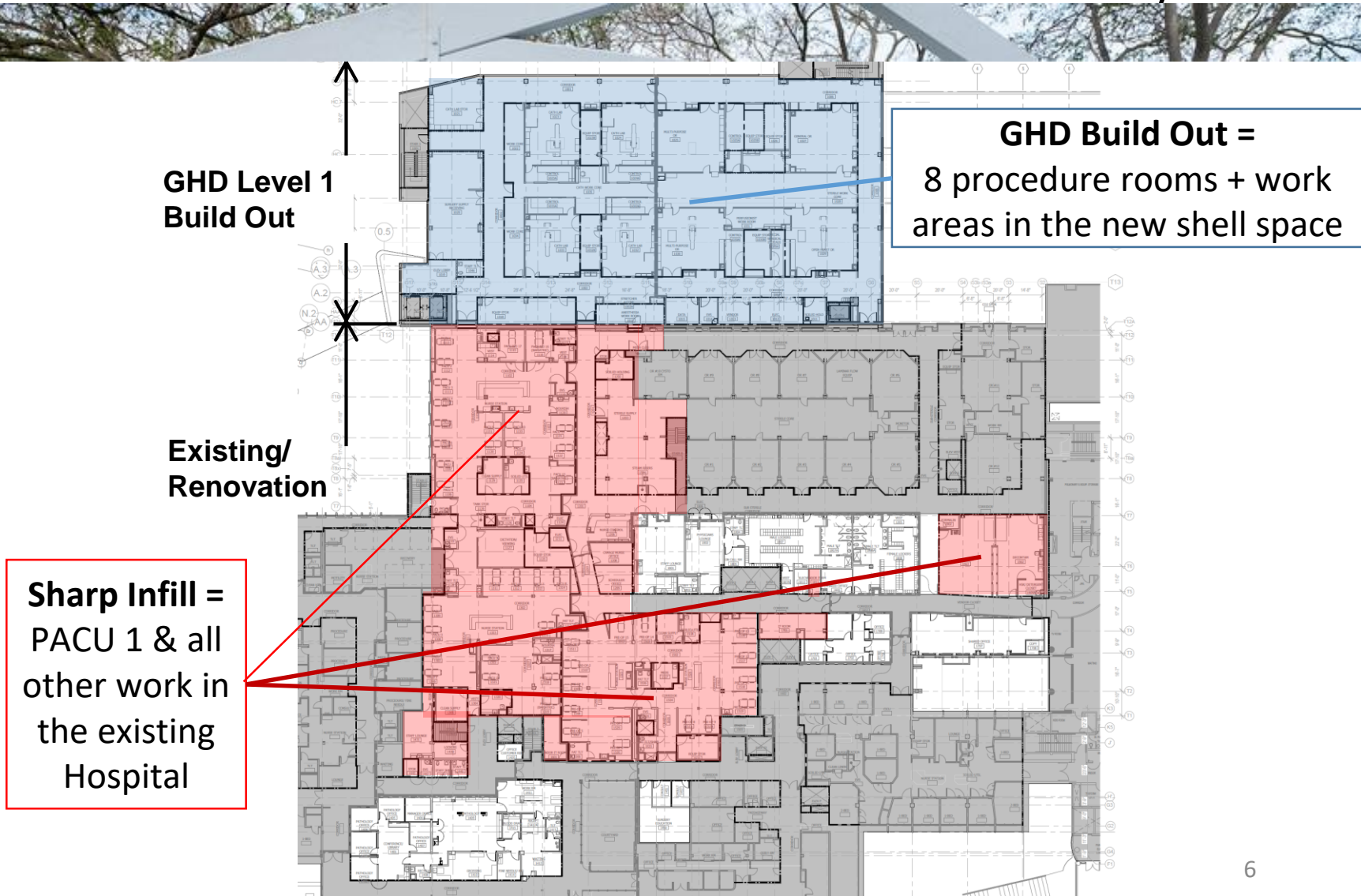
- Schedule delays: 65 days approved to date; 9 added days of delay anticipated.
- Schedule impact: Due to mechanical installation issues, commissioning the system may add time to the schedule.
- Mechanical, electrical finishes installed in ORs #1025, #1027, #1029, #1030.
- Wall protection complete; finish flooring underway in Cath Labs #1023, #1024, #1032, #1033, and core, North half of floor.
- AE formal punchlist of the South ORs starts 1-29-18.



West Corridor: Cleaning prior to installing T-Bar ceiling

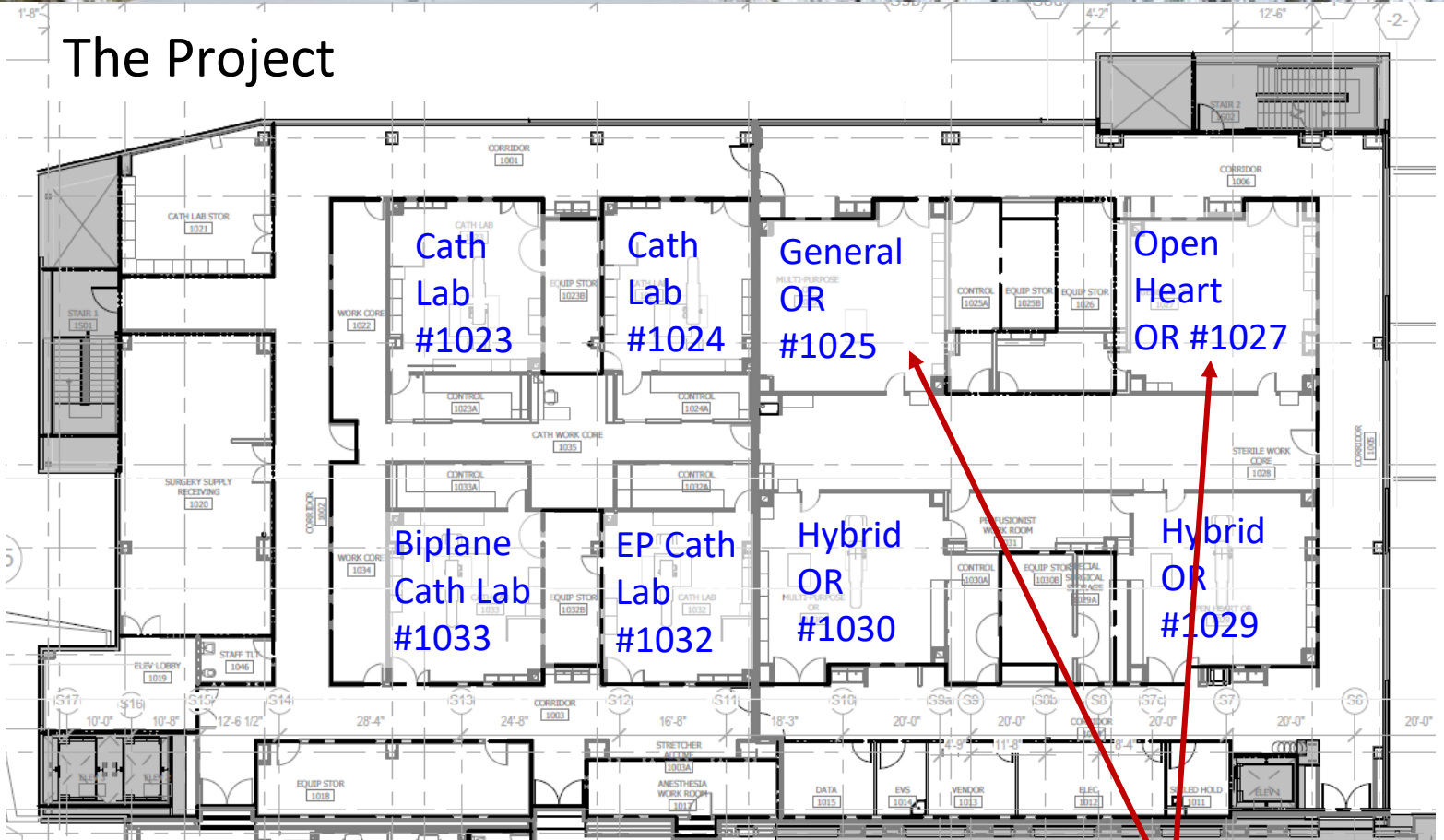
3i. Sharp Infill/GHD Build Out Plans

January 2018



3ii. Surgery Suite Overview Plan

January 2018



Equipment installation starts 2-5-18 in ORs #1025, #1027

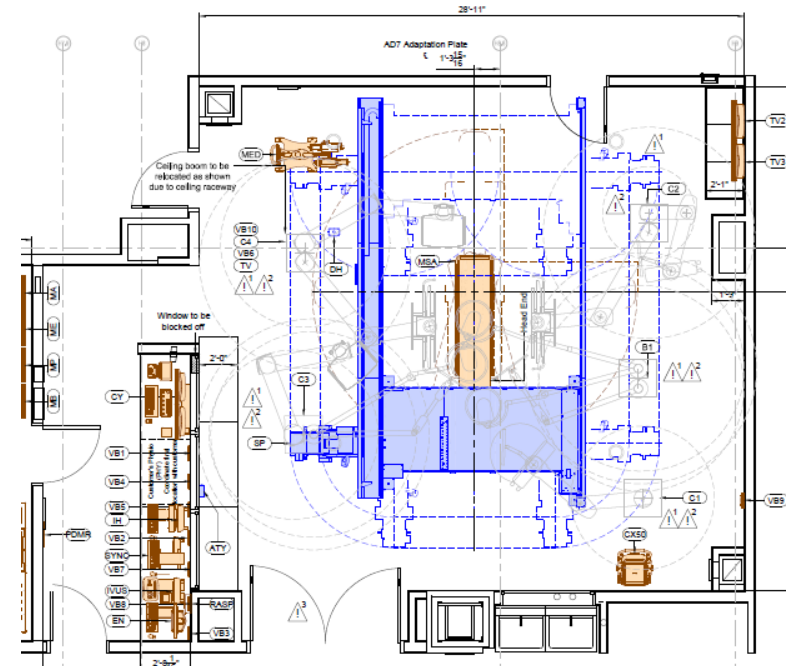
3iii. Equipment Layout, Hybrid OR

#1029:

January 2018



- CT Scanner
- Anesthesia Boom
- Monitor/equipment Booms
- Patient Table
- Light Booms

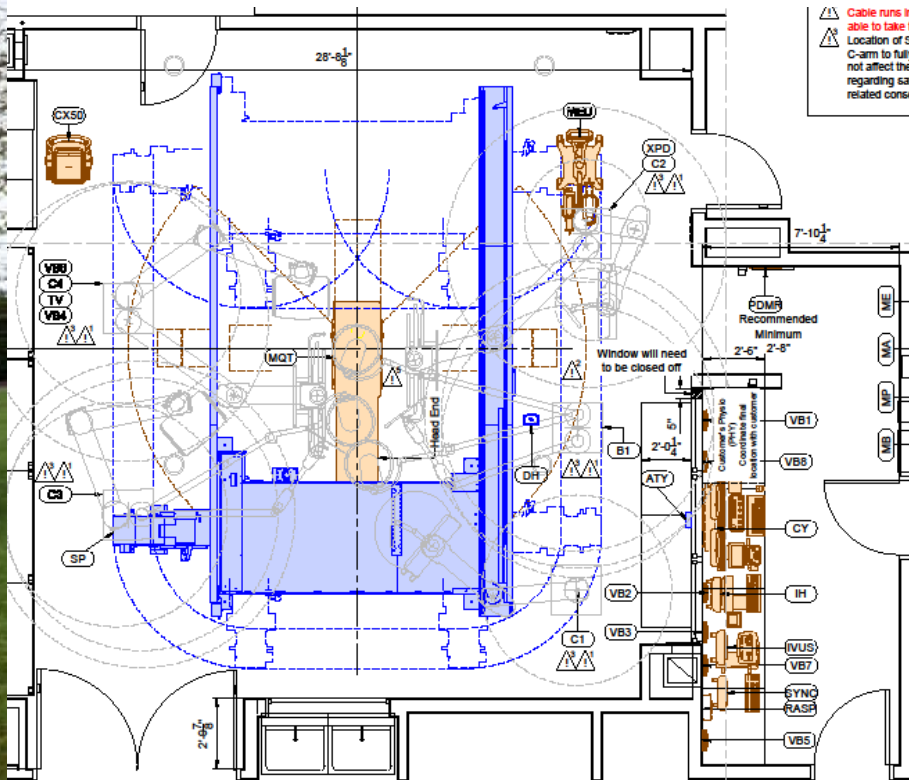


Conceptual Rendering

Floor Plan

3iv. Equipment Plan, Hybrid OR #1030:

January 2018

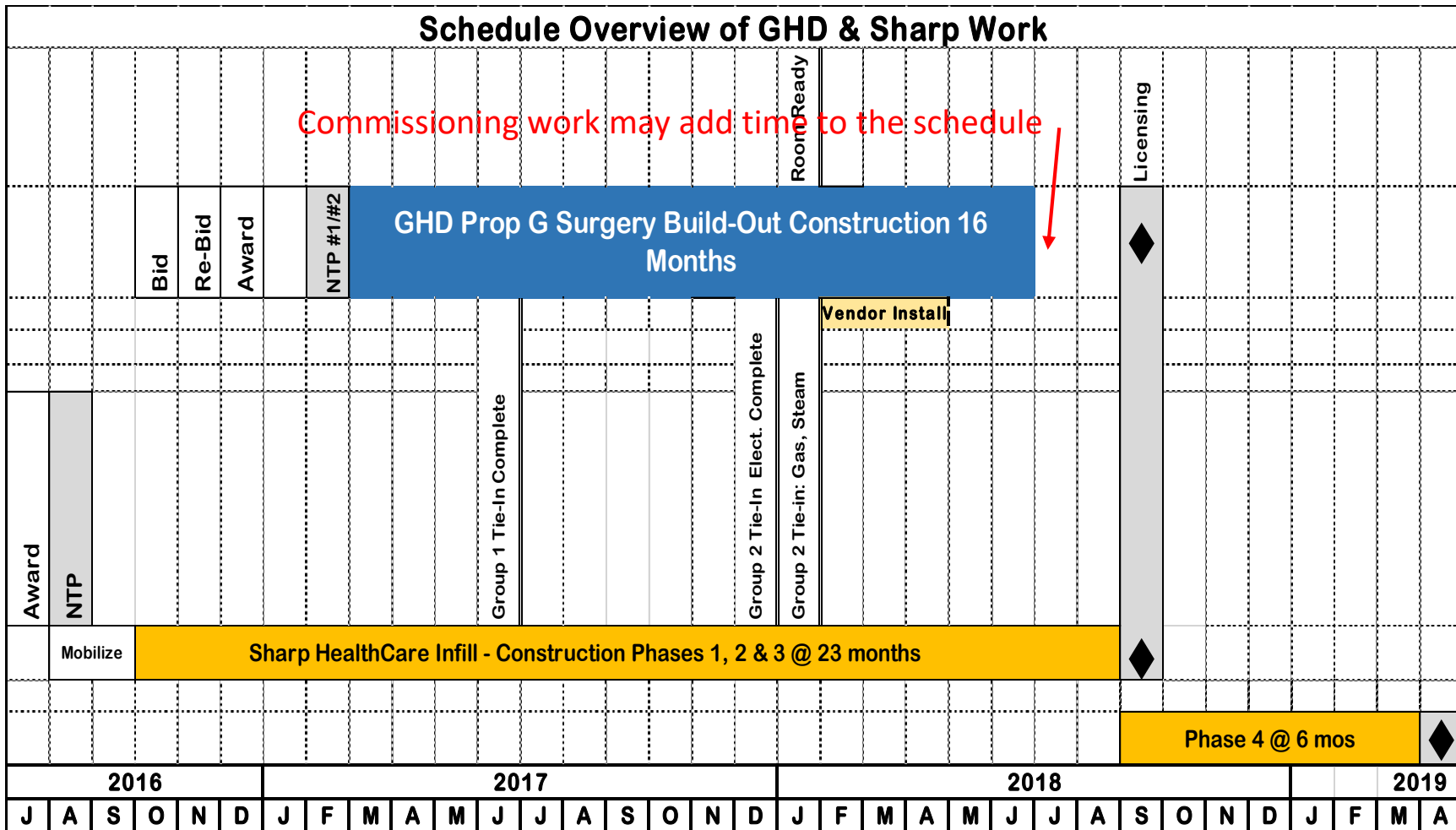


Floor Plan

#1030: Flooring protected, Wall protection protected, doors hung, lights installed: Getting Ready for 2-12-18 Equipment Installation

4. Schedule: Prop G + Sharp Infill

January 2018



5. Budget

January 2018



Category	Project Name	Projected Cost At Completion (01/24/18)	Projected Cost At Completion (12/20/17)
Funds Available	Total Prop G Building Fund (Bond Proceeds, Interest Earned, Grants, Etc.)	\$260,772,011	\$257,072,011
Projects Completed	Central Energy Plant, ED-CCU, Heart & Vascular Bldg, East Tower Renovation, Early Utilities	\$225,996,922	\$225,996,922
	Remaining Prop G Building Funds before Level 1 Surgery	\$34,775,089	\$31,075,089
Projects Under Construction	H&V Level 1 Surgery Floor Buildout	\$29,533,684	\$29,533,684
	Potential Surplus (as of 12/20/17)	\$1,541,405	\$1,541,405
	2016 Settlement Proceeds	\$3,700,000	
	Legal Expenses for Reimbursement	(\$1,014,356)	
	Forecast Potential Surplus	\$4,227,049	

6. Snapshot on Sharp HealthCare Infill Project

January 2018

- Ongoing Level 1 PACU 1 construction work to install overhead/in-wall utilities, soffit & second-side drywall
- Continue installation of wall frame, drywall, and overhead/in-wall utilities in PACU 2
- Ongoing expansion joint installation of existing utilities on Level 1 to meet OSHPD seismic criteria in the new PACU and Sterile Storage spaces



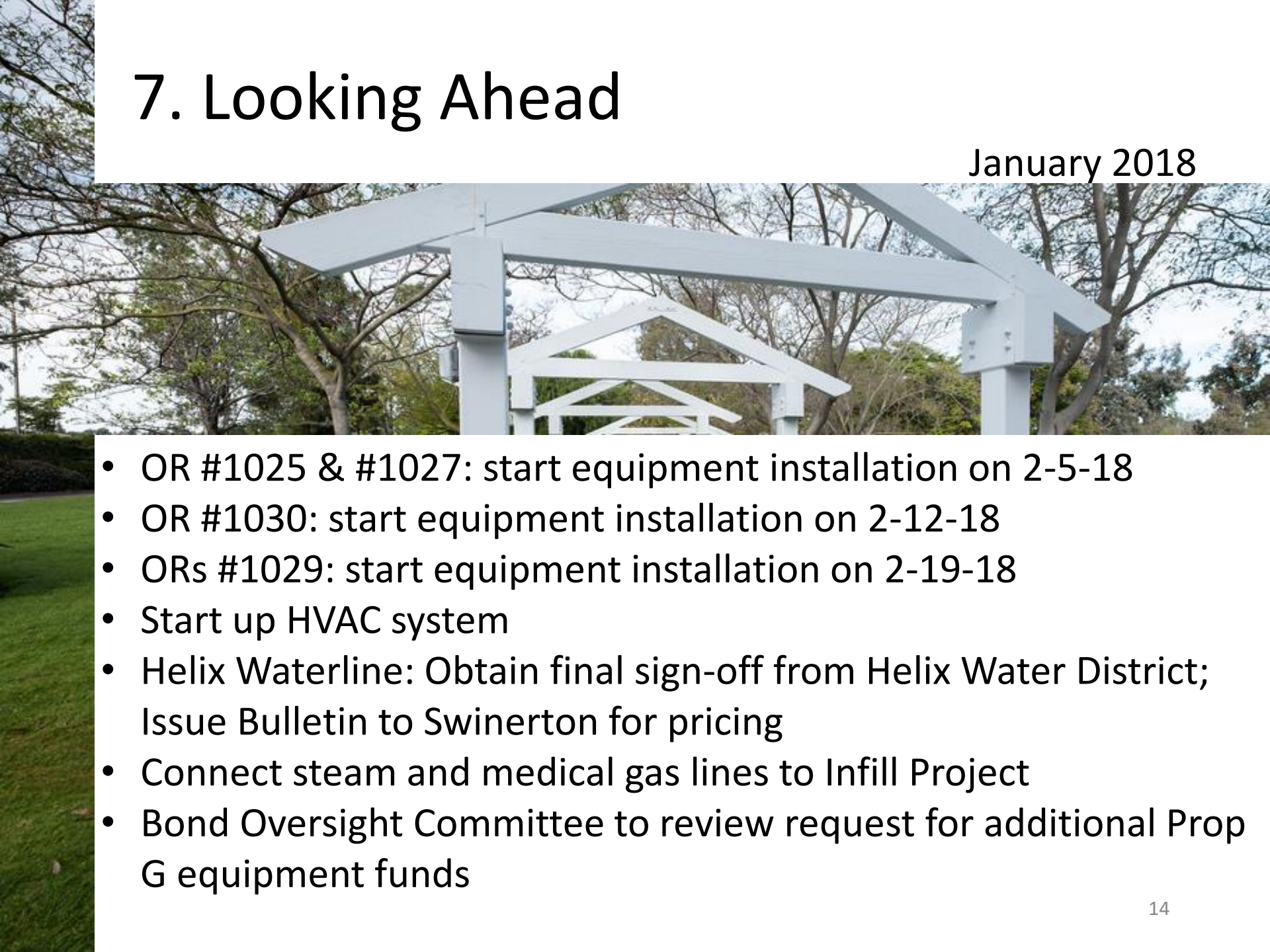
Overhead Utilities & Soffit Installation



PACU 1 Install Soffit & Drywall

7. Looking Ahead

January 2018

- 
- OR #1025 & #1027: start equipment installation on 2-5-18
 - OR #1030: start equipment installation on 2-12-18
 - ORs #1029: start equipment installation on 2-19-18
 - Start up HVAC system
 - Helix Waterline: Obtain final sign-off from Helix Water District; Issue Bulletin to Swinerton for pricing
 - Connect steam and medical gas lines to Infill Project
 - Bond Oversight Committee to review request for additional Prop G equipment funds



Questions?