

# GROSSMONT HEALTHCARE DISTRICT

## PROPOSITION G

## DESIGN & CONSTRUCTION SERVICES



Contractor: McCarthy  
Architect: KMD

*Monthly Project Construction Report*  
**December 2014** (Updated Dec. 23, 2014)

### Project: Heart and Vascular (B, A, Shell)

Construction Budget Status		% Complete	Schedule Status
Award Amount:	\$26,325,383		Contract Award: January 28, 2013 Executed Contract: April 9, 2013 % Complete: 86.68% Original Completion: March 16, 2015 Approved Time Extensions: 0 CD New Completion: March 16, 2015 Project Scheduled Variance: 81 CD Forecast Completion: June 5, 2015 % Complete per forecast: 76.70%
Approved CO's:	\$2,671,260		
Revised Contract:	\$28,996,643		
Invoiced to Date:	\$18,131,678	62.5%	
<b>Balance</b>	\$10,864,965		
Total Forecast Pending CO's:	\$5,128,217		
<b>Forecast Adjusted Budget</b>	\$34,124,860		

<b>RISK STATUS</b>	Budget:				Schedule:			

### Overall Progress:

- Exterior Building Skin scratch coat and brown coat ongoing, color coat starting at the penthouse level
- Roofing loaded and installation has commenced
- Pneumatic Tubes installed, interchange room pending architectural updates
- Level B Interior Framing and Overhead Mechanical systems are 95%, above ceiling MEOR punch list commenced
- Level A Interior Framing and Overhead Mechanical systems are 95%, in-wall electrical and plumbing ongoing, ready for walls to be closed up as soon as exterior skin, windows and roof complete
- Conduits for Level 1 Cath Lab and OR's are in the process of installation.
- The Pneumatic Tube system is 75 percent complete with feeders.
- In wall electrical and data is under review with a punch list by Randal Lamb [electrical/mechanical/plumbing EOR] is underway.

# GROSSMONT HEALTHCARE DISTRICT

## PROPOSITION G

## DESIGN & CONSTRUCTION SERVICES



### Status Photos:



Level A



Level B Loading Dock



North Exterior from East

### Design Issues:

- Redesign of building connection at West Elevation ongoing due to complexity of interface with East Tower and impact to hospital operations.
- The site civil work completion at the North elevation is being redesigned to prevent rework or damage during the future Level 1 Build-Out and Infill projects.
- Procurement of equipment is underway with purchase orders being issued. Verification of utilities for equipment connections is proceeding.

### Construction Issues:

- Late identification of code compliance issues at the penthouses are impacting completion of the exterior skin of the penthouses and delaying start of roof installation.
- The exterior skin system mockup has been completed successfully. Implementation on the building is still underway.
- The penthouse scaffolding will be removed soon to allow for the roofing installation.
- Roofing detailing meeting to review status is scheduled.

### Infection Control Issues/Status:

- Infection control barriers are in place and in compliance.

### Corrective Action Plan:

- McCarthy is coordinating acceleration of the Central Plant utilities that feed the H&V in order to maintain the H&V (and later Level 1 Project) schedule.
- The trellis is underway to allow the utility connections to be accomplished in a timely manner.

### Safety:

- There have been no reportable incidents in December.

Prepared By: Gary Kiebel / Jack Garrett / Vicki Townsend

HEART AND VASCULAR BUILDING

Date: 12/23/2014

Cost Status by Budget Category:

Budget Category	Orig Contract/or Budget	Approved Changes	Current Actuals/Paid	Unspent Commitments	Current Commitments
<b>McCarthy Contract</b>	<b>\$26,325,383</b>	<b>\$2,671,260</b>	<b>18,131,678</b>	<b>\$10,864,965</b>	<b>28,996,643</b>
Commissioning	\$96,740	\$0	6,536	\$90,204	96,740
Hazmat	\$8,410	\$86,824	80,338	\$14,896	95,234
Ptube Budget	\$968,352		352,127	\$616,225	968,352
<b>Construction Subtotal</b>	<b>\$27,398,885</b>	<b>\$2,758,084</b>	<b>\$18,570,679</b>	<b>\$11,586,290</b>	<b>\$30,156,969</b>
<b>Equipment Subtotal</b>	<b>\$909,775</b>		<b>0</b>	<b>\$909,775</b>	<b>909,775</b>
<b>Design and Consultant Fees Subtotal</b>	<b>\$8,588,211</b>	<b>\$4,127,668</b>	<b>11,305,083</b>	<b>\$1,410,796</b>	<b>12,715,879</b>
<b>Administrative Costs Subtotal</b>	<b>\$9,752,654</b>		<b>8,127,673</b>	<b>\$1,624,981</b>	<b>9,752,654</b>
<b>Project Subtotal</b>	<b>\$46,649,525</b>	<b>\$6,885,752</b>	<b>\$38,003,435</b>	<b>\$15,531,842</b>	<b>\$53,535,277</b>

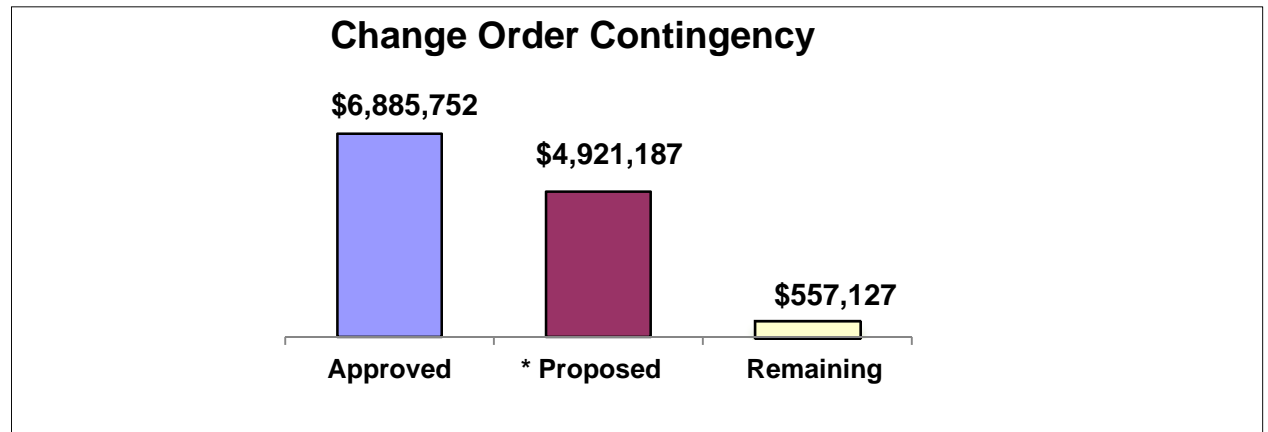
Contingency-Design and Construction Activity	Beginning	Approved	* Proposed	Remaining	Current
Contingency Bank	\$12,364,066	\$6,885,752	\$4,921,187	\$557,127	\$5,478,314
<b>Totals</b>	<b>\$12,364,066</b>	<b>\$6,885,752</b>	<b>\$4,921,187</b>	<b>\$557,127</b>	<b>\$5,478,314</b>

**Total Project Budget**

**\$59,013,591**

**\$59,013,591**

\* Proposed includes Contractor and Designer PCOs and Owner estimates for projected costs, and adm costs to complete plus \$2 mil reserve for const conting.



Level 1 Buildout - DESIGN PHASE

Date: 12/23/2014

Cost Status by Budget Category:

Budget Category	Orig Contract/or Budget	Approved Changes	Current Actuals/Paid	Unspent Commitments	Current Commitments
<b>Current Construction Budget</b>	<b>\$10,856,368</b>	<b>\$0</b>	<b>0</b>	<b>\$10,856,368</b>	<b>10,856,368</b>
Other	\$0		0		0
Commissioning	\$20,000	\$0	0	\$20,000	20,000
<b>Construction Subtotal</b>	<b>\$10,876,368</b>	<b>\$0</b>	<b>\$0</b>	<b>\$10,876,368</b>	<b>\$10,876,368</b>
<b>Equipment Subtotal</b>	<b>\$8,328,628</b>		<b>0</b>	<b>\$8,328,628</b>	<b>8,328,628</b>
<b>Design and Consultant Fees Subtotal</b>	<b>\$1,888,631</b>	<b>\$567,231</b>	<b>1,882,572</b>	<b>\$573,290</b>	<b>2,455,862</b>
<b>Administrative Costs Subtotal</b>	<b>\$3,812,021</b>	<b>\$0</b>	<b>1,001,234</b>	<b>\$2,810,787</b>	<b>3,812,021</b>
<b>Project Subtotal</b>	<b>\$24,905,648</b>	<b>\$567,231</b>	<b>\$2,883,806</b>	<b>\$22,589,073</b>	<b>\$25,472,879</b>

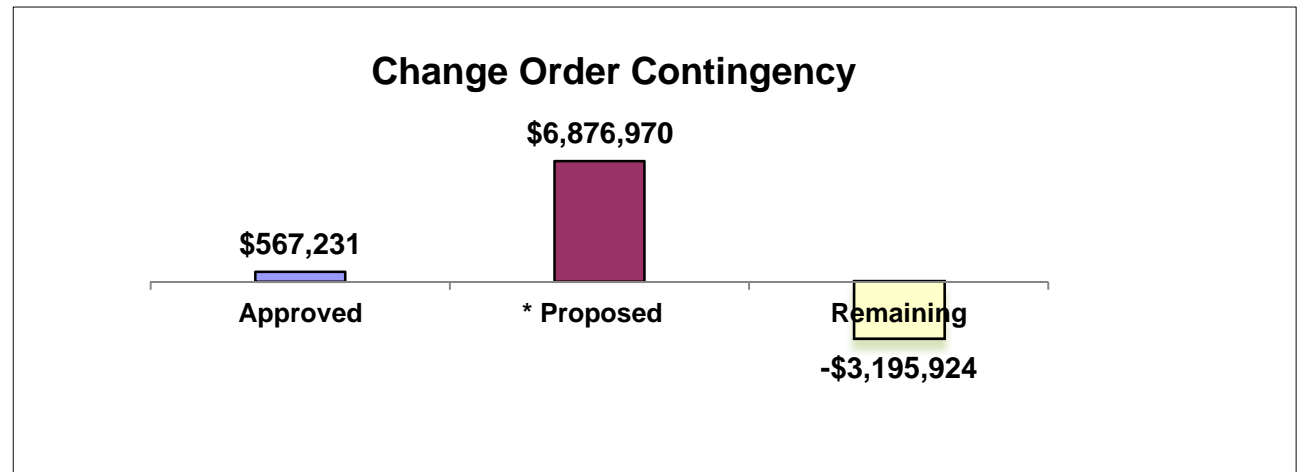
Contingency-Design and Construction Activity	Beginning	Approved	* Proposed	Remaining	Current
* Contingency Bank	\$4,248,277	\$567,231	\$6,876,970	(\$3,195,924)	\$3,681,046
<b>Totals</b>	<b>\$4,248,277</b>	<b>\$567,231</b>	<b>\$6,876,970</b>	<b>(\$3,195,924)</b>	<b>\$3,681,046</b>

**Total Project Budget**

**\$29,153,925**

**\$29,153,925**

\* Proposed includes revised project budgets for construction per Cummings Aug 2014 report, AE proposed changes and projected adm cost to complete.



# GROSSMONT HEALTHCARE DISTRICT

## PROPOSITION G

## DESIGN & CONSTRUCTION SERVICES



### Monthly Project Construction Report

December 2014 (Updated Dec. 22, 2014)







Contractor: McCarthy

Architect: Syska Hennessy

Project: **Central Energy Plant with Co-Gen**

CEP Construction Budget Status	\$	% Complete	Schedule Status	
Award Amount:	\$ 26,066,942		Contract Award Date :	July 27, 2012
Approved CO's:	\$ 4,243,743		Percent Complete:	93%
Revised Contract:	\$ 30,310,685		Original Completion Date:	March 2, 2015
Invoiced to Date:	\$ 26,365,263	87%	Approved Time Extension:	0 Days
<b>Balance</b>	\$ 3,945,422		New Completion Date:	March 2, 2015
Total Forecast Pending CO's	\$ 7,083,463		Projected Sch.Variance(+/-):	-172
<b>Forecast Adjusted Budget</b>	\$ 37,394,148		Forecast Completion Date:	September 26, 2015
			% Complete per forecast	76%

COGEN Construction Budget Status	\$	% Complete	Schedule Status	
Award Amount:	\$ 6,907,991		Contract Award Date :	July 27, 2012
Approved CO's:	\$ 374,114		Percent Complete:	93%
Revised Contract:	\$ 7,282,105		Original Completion Date:	March 2, 2015
Invoiced to Date:	\$ 6,745,023	93%	Approved Time Extension:	0 Days
<b>Balance</b>	\$ 537,082		New Completion Date:	March 2, 2015
Total Forecast Pending CO's:	\$ 1,034,286		Projected Sch.Variance(+/-):	-172
<b>Forecast Adjusted Budget</b>	\$ 8,316,391		Forecast Completion Date:	September 26, 2015
			% Complete per forecast	76%

<b>RISK STATUS</b>	Budget:	  	Schedule:	  

# GROSSMONT HEALTHCARE DISTRICT

## PROPOSITION G

## DESIGN & CONSTRUCTION SERVICES



### Overall Progress:

#### Interior:

- The major equipment is still being connected to their respective systems and/or piping.
- Interior wall framing modifications are being completed.
- Walls and other components are being painted..
- Doors and hardware are installed to secure the building.
- HRSG, diverter, vents and catwalks are being anchored

#### Exterior:

- Pervious concrete placed at East side of equipment yard for the drainage swale.
- The utility tunnel from the CEP Vault to the H&V Vault is placed and piping lay-out is proceeding.
- North end of the site's tank fill pads, trash containment slab and chemical treatment area slabs and columns are being laid out and constructed.
- Utility Trellis scope lay out and conflicts are being vetted out.

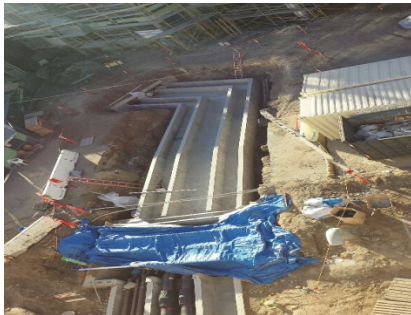
#### Existing Central Utility Plant (CUP);

- HVSB cutover was completed successfully.

#### COGEN Status

- Accessory components continue to be completed.
- CA ISO agreements and components (Meters) are being finalized.
- SGIP details are being finalized.

### Construction Status Photos:



*CEP to H&V Vaults Utility Tunnel*



*Battery Rack*



*Pervious Concrete Curing*

### Design Issues:

# GROSSMONT HEALTHCARE DISTRICT

## PROPOSITION G

## DESIGN & CONSTRUCTION SERVICES



- The High Voltage Switch Board in the existing CEP had been slightly modified unbeknown to the design team. Additional coordination will be necessary after discussions with Russel Electric, Berg, Siemens and Emerson prior to the Rule 21 gear installation.
- Engineering Dept. is planning to remove the Chiller No. 2 as soon as weather permits. IE Cool weather when the 950T chiller wouldn't be needed.
- The new design relocating the Oxygen Tank Farm (or deferring it) is being OSHPD reviewed and coordinated.
- Emergency Generator enclosures seismic calculations are being returned from OSHPD.
- Equipment controls between the old and new central plant systems are being worked out by the design, construction and staff teams.
- Structural support of new utilities in the existing Central Utility Plant is being vetted out.
- South Ring Road Helix Water revisions need to be incorporated into the CEP project in lieu of the H&V to shorten the overall project contract time.
- Phasing plans for the commissioning of the CEP are being developed formally for purposes of presentation to OSHPD and for use by Engineering to plan the utility cutovers.
- A thermal analysis of the piping has revealed some changes required to allow expansion between facilities.

### Construction Issues:

- Repair of some shot pins into a structural gusset plate is a challenge for the contractor to find a qualified welding procedure and welder.
- The trellis footings may be in conflict with some underground utilities.

### Infection Control Issues/Status:

- None (freestanding building outside main hospital)

### Safety:

- There was a forklift accident knocking out a temporary genset switch which caused the facility to go to emergency power for one loop of the facility for 10 hours.
- SDG&E had to replace their gear for safety reasons.
- A temporary genset supplying normal power failed on the last morning of the HVSB cutover and the emergency generators had to provide power to one loop the facility until the cutover was rescheduled earlier than planned.

### Corrective Action Plan (when applicable):

- None

Prepared By: John Serdar

Central Energy Plant

Date: 12/23/2014

Cost Status by Budget Category:

Budget Category	Orig Contract/or Budget	Approved Changes	Current Actuals/Paid	Unspent Commitments	Current Commitments
<b>McCarthy Contract</b>	<b>\$26,066,942</b>	<b>\$4,243,743</b>	<b>26,365,263</b>	<b>\$3,945,422</b>	<b>30,310,685</b>
Commissioning	\$122,000	\$0	63,530	\$58,470	122,000
<b>Construction Subtotal</b>	<b>\$26,188,942</b>	<b>\$4,243,743</b>	<b>26,428,793</b>	<b>\$4,003,892</b>	<b>30,432,685</b>
<b>Equipment Subtotal</b>	<b>\$0</b>	<b>0</b>	<b>0</b>	<b>\$0</b>	<b>0</b>
<b>Design and Consultant Fees Subtotal</b>	<b>\$3,847,500</b>	<b>\$2,321,248</b>	<b>5,007,033</b>	<b>\$1,161,715</b>	<b>6,168,748</b>
<b>Administrative Costs Subtotal</b>	<b>\$8,354,706</b>		<b>7,072,150</b>	<b>\$1,282,556</b>	<b>8,354,706</b>
<b>Project Subtotal</b>	<b>\$38,391,148</b>	<b>\$6,564,991</b>	<b>\$38,507,976</b>	<b>\$6,448,163</b>	<b>\$44,956,139</b>

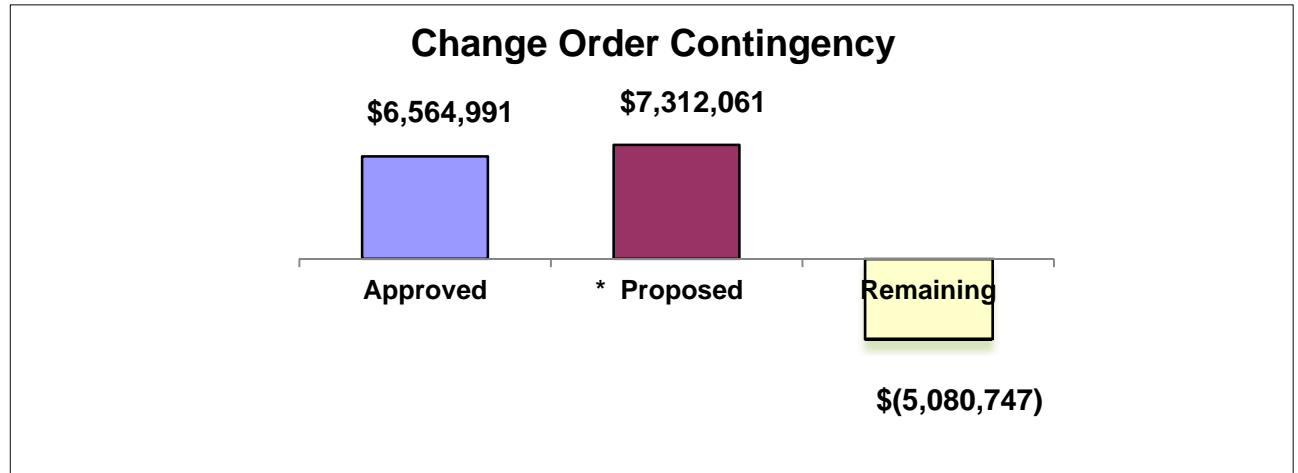
Contingency-Design and Construction Activity	Beginning	Approved	* Proposed	Remaining	Current
Contingency Bank	\$8,796,305	\$6,564,991	\$7,312,061	(\$5,080,747)	\$2,231,314
<b>Totals</b>	<b>\$8,796,305</b>	<b>\$6,564,991</b>	<b>\$7,312,061</b>	<b>-\$5,080,747</b>	<b>\$2,231,314</b>

**Total Project Budget**

**\$47,187,453**

**\$47,187,453**

\* Proposed includes Contractor, Designer proposed changes, and Owner estimates for projected constr and admin costs to complete.



Co-Generation-RBS Funded (Not Prop G)

Date: 12/23/2014

Cost Status by Budget Category:

Budget Category	Orig Contract/or Budget	Approved Changes	Current Actuals/Paid	Unspent Commitments	Current Commitments
<b>McCarthy Contract</b>	<b>\$6,907,991</b>	<b>\$374,114</b>	<b>6,745,023</b>	<b>\$537,082</b>	<b>7,282,105</b>
Commissioning	\$50,000	\$0	0	\$50,000	50,000
Solar-Cogen Unit	\$4,642,786	\$176,466	4,704,166	\$115,086	4,819,252
<b>Construction Subtotal</b>	<b>\$11,600,777</b>	<b>\$550,580</b>	<b>11,449,189</b>	<b>\$702,168</b>	<b>12,151,357</b>
<b>Equipment Subtotal</b>	<b>\$0</b>	<b>0</b>	<b>0</b>	<b>\$0</b>	<b>0</b>
<b>Design and Consultant Fees Subtotal</b>	<b>\$0</b>	<b>\$230,000</b>	<b>132,959</b>	<b>\$97,041</b>	<b>230,000</b>
<b>Administrative Costs Subtotal</b>	<b>\$1,003,638</b>	<b>\$0</b>	<b>494,781</b>	<b>\$508,857</b>	<b>1,003,638</b>
<b>Project Subtotal</b>	<b>\$12,604,415</b>	<b>\$780,580</b>	<b>\$12,076,929</b>	<b>\$1,308,066</b>	<b>\$13,384,995</b>

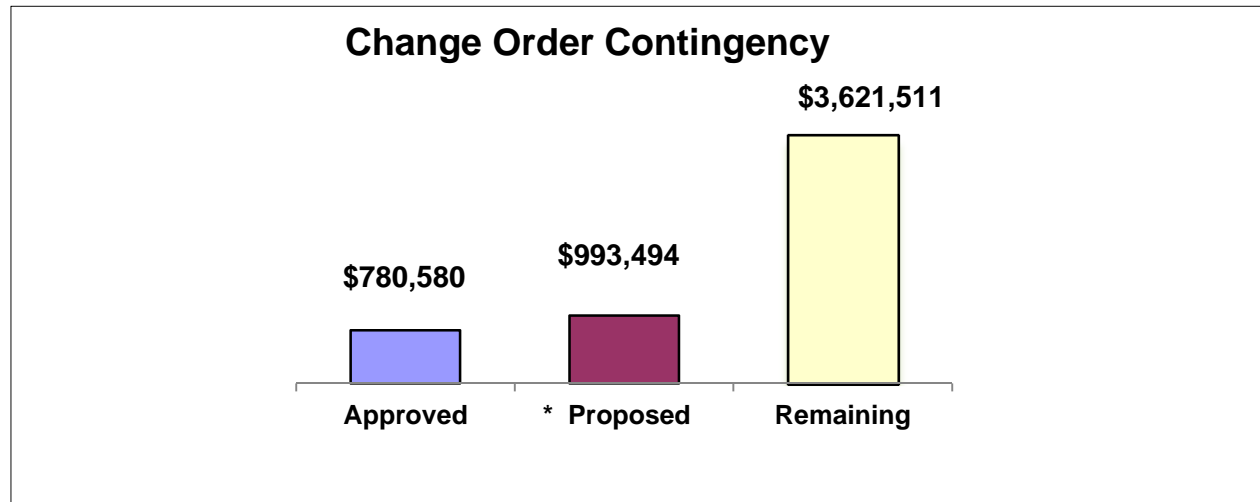
Contingency-Design and Construction Activity	Beginning	Approved	* Proposed	Remaining	Current
Contingency Bank	\$5,395,585	\$780,580	\$993,494	\$3,621,511	\$4,615,005
<b>Totals</b>	<b>\$5,395,585</b>	<b>\$780,580</b>	<b>\$993,494</b>	<b>\$3,621,511</b>	<b>\$4,615,005</b>

**Total Project Budget**

**\$18,000,000**

**\$18,000,000**

\* Proposed includes GC and AE proposals, Owner estimated projected const costs, and admin costs to complete.



# GROSSMONT HEALTHCARE DISTRICT

## PROPOSITION G

## DESIGN & CONSTRUCTION SERVICES



### Monthly Project Construction Report







December 2014 (revised as of December 23, 2014)

Contractor: C.W. Driver

Architect: Stantec

Project : **East Tower Upgrade**

Construction Budget Status	\$	% Complete	Schedule Status
Award Amount:	\$17,325,000.00		Contract Award Date: April 3, 2012 % Complete: 106% Original Completion Date: Oct. 29, 2014 Approved time extension: 0 CD's New Completion Date: Oct. 29, 2014 Projected Sch. Variance (+/-): - 505 CD's  Forecast Completion Date: March 20, 2016 % Complete per forecast: 69%
Approved CO's:	\$4,712,043.00		
Revised Contract:	\$22,037,043.00		
Invoiced to Date:	\$13,647,188.00	62%	
<b>Balance</b>	\$8,389,855.00		
Total Forecast Pending CO's:	\$5,413,512.00		
<b>Forecast Adjusted Budget</b>	\$27,450,555.00		

<b>RISK STATUS</b>	Budget:	  	Schedule:	  

#### Overall Progress:

**Miscellaneous:** Level 3 is complete. Patients were moved on to the floor on December 18<sup>th</sup>, and patients were moved off Level 4 on December 22<sup>nd</sup>. Construction is scheduled to begin on Level 4 on December 23<sup>rd</sup>.

#### Elevator Modernization:

OSHPD final sign off on the elevators continues to unresolved, pending resolution of a difference of opinion between the OSHPD ACO, who disagrees with the electrical grounding installation, and the state elevator inspector and the manufacturer, who concur with the installation. The issue was informally appealed to the OSHPD RCO, a meeting was held that included a local electrical engineer familiar with the Facility, and a letter has been provided clarifying that the Electrical Engineer of Record concurs with the state elevator inspector and the manufacturer. Resolution, leaving the installation as installed, is expected, as is the final sign off.

**GROSSMONT HEALTHCARE DISTRICT  
PROPOSITION G**

**DESIGN & CONSTRUCTION SERVICES**



**Construction Status Photos:**



**Photo #1: East Corridor**



**Photo #2: South Charting Room**



**Photo #3: Typical Patient Room**



**Photo #4: ADA Patient Room 329**



**Photo #5: ADA Patient Room 313**

# GROSSMONT HEALTHCARE DISTRICT

## PROPOSITION G

## DESIGN & CONSTRUCTION SERVICES



### **Design Issues:**

- There are no current design issues.

### **Construction Issues:**

- There are no current critical construction issues. CW Driver's schedule for Level 4 indicates their goal is to achieve beneficial occupancy for the floor on May 21, 2015.

### **Infection Control:**

- A regular, scheduled site walk with the Sharp IC officer continues. The OSHPD FLSO will be on site on Tuesday, December 23<sup>rd</sup>, and will be consulted regarding the requirements for controlling access/egress to/through Level 4 from Level 5 during construction on Level 4, the outcome of which may affect the location and type of infection control barriers.

### **Safety:**

- No safety audits were performed by the Smart Safety Group this month.

Prepared By: Kate Herring and Robert Turner

**EAST TOWER UPGRADE**

Date: 12/23/2014

**Cost Status by Budget Category:**

Budget Category	Orig Contract/or Budget	Approved Changes	Current Actuals/Paid	Unspent Commitments	Current Commitments
<b>C.W. Driver</b>	<b>\$17,325,000</b>	<b>\$4,712,043</b>	<b>13,647,188</b>	<b>\$8,389,855</b>	<b>22,037,043</b>
Commissioning	\$53,500	\$6,000	32,485	\$27,015	59,500
Hazmat	\$43,124	\$37,615	62,903	\$17,836	80,739
Ptube Budget	\$1,364,672		55,748	\$1,308,924	1,364,672
Insurance	\$282,669		282,669	\$0	282,669
<b>Construction Subtotal</b>	<b>\$19,068,965</b>	<b>\$4,755,658</b>	<b>14,080,993</b>	<b>\$9,743,630</b>	<b>23,824,623</b>
<b>Equipment Subtotal</b>	<b>\$0</b>		<b>0</b>	<b>\$0</b>	<b>0</b>
<b>Design and Consultant Fees Subtotal</b>	<b>\$3,700,831</b>	<b>\$2,844,110</b>	<b>5,600,445</b>	<b>\$944,496</b>	<b>6,544,941</b>
<b>Administrative Costs Subtotal</b>	<b>\$6,788,010</b>	<b>\$0</b>	<b>4,878,755</b>	<b>\$1,909,255</b>	<b>6,788,010</b>
<b>Project Subtotal</b>	<b>\$29,557,806</b>	<b>\$7,599,768</b>	<b>\$24,560,193</b>	<b>\$12,597,381</b>	<b>\$37,157,574</b>

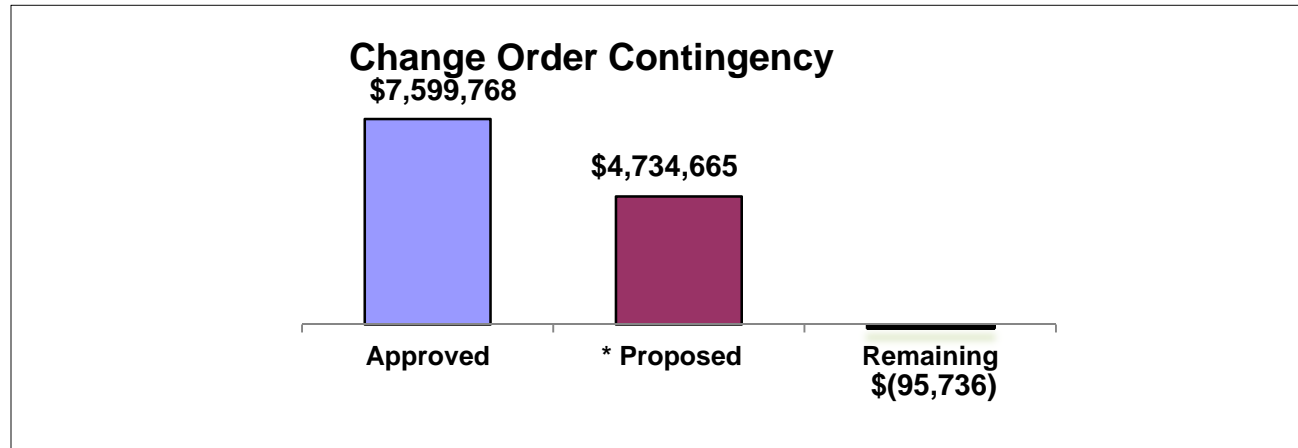
Contingency-Design and Construction Activity	Beginning	Approved	* Proposed	Remaining	Current
Contingency Bank	\$12,238,697	\$7,599,768	\$4,734,665	(\$95,736)	\$4,638,929
<b>Totals</b>	<b>\$12,238,697</b>	<b>\$7,599,768</b>	<b>\$4,734,665</b>	<b>(\$95,736)</b>	<b>\$4,638,929</b>

**Total Project Budget**

**\$41,796,503**

**\$41,796,503**

\* Note: Proposed includes Contractor/Designer proposals and Owner estimates for chgs to Floors 3,4,5 and admin costs to complete.



# GROSSMONT HEALTHCARE DISTRICT

## PROPOSITION G

## DESIGN & CONSTRUCTION SERVICES



Contractor: *Advanced Pneumatic Tube*  
 Architect: *Stantec*

*Monthly Project Construction Report*  
**December 2014** [Updated 12/22/14]

### Project: Pneumatic Tube System Upgrade and Expansion

Construction Budget Status		% Complete	Schedule Status
Award Amount:	\$1,279,000		Contract Award: January 22, 2014 NTP #1: March 4, 2014 % Complete: 29% Original Completion: August 2, 2016 Approved Time Extensions: 0 CD New Completion: August 2, 2016 Project Scheduled Variance: 0 CD Forecast Completion: August 2, 2016 % Complete per forecast: 29%
Approved CO's:	\$0		
Revised Contract:	\$1,279,000		
Invoiced to Date:	\$407,876	32%	
<b>Balance</b>	\$871,124		
Total Forecast Pending CO's:	\$0		
<b>Forecast Adjusted Budget</b>	\$1,279,000		

<b>RISK STATUS</b>	Budget:				Schedule:			

- **Overall Progress:**
  - H&V Level B currently has 9 of 14 transfer stations installed. Tubing from transfer stations to the blower room, and through Level A penetrations is 85% complete. Level A has all 6 stations installed along with 100% of the overhead tubing completed.
  - East Tower Level 3 has been completed. The Level 2 station will be installed the first week in January. Modification to the East Tower Level 5 and Penthouse drawings will be complete the last week in December.

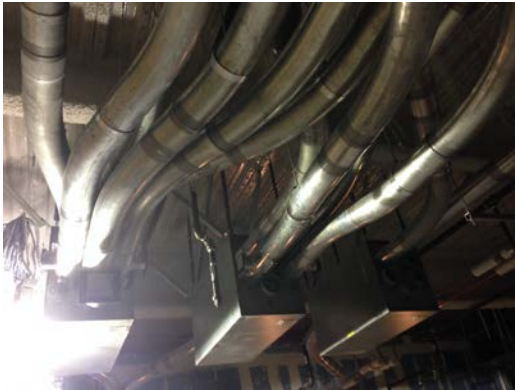
# GROSSMONT HEALTHCARE DISTRICT

## PROPOSITION G

## DESIGN & CONSTRUCTION SERVICES



- **Status Photos:**



Level B Transfer Stations



Level A Lab Stations

- **Design Issues:**

- H&V is getting a revision to the top of wall details for the new 1 hour wall in the blower room. This should eliminate any fire rating issues.
- East Tower is currently in the process of redesigning the 5<sup>th</sup> floor. The contract documents show the tube running through the corridor to the transfer station, located above the nurse station. Because of space limitations and noise, this portion of work will be moved to the 6<sup>th</sup> floor penthouse. The 4 tubes will then enter the 5<sup>th</sup> floor through a waterproof dog house.

- **Construction Issues:**

- There are no construction issues at this time.

- **Infection Control Issues/Status:**

- There are no infection control issues at this time. Coordination with the IC committee and Level 2 staff will take place prior to installation of the station.

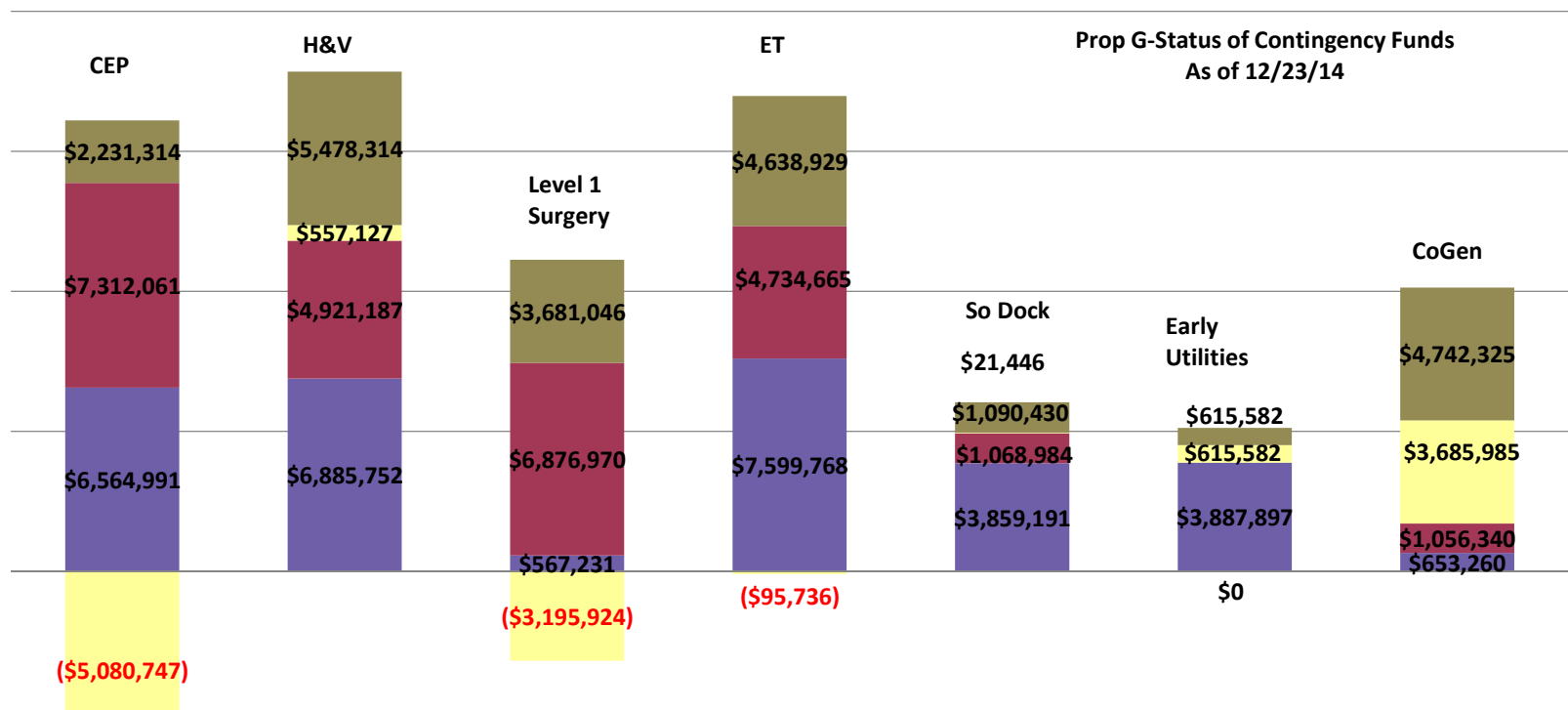
- **Corrective Action Plan:**

- None at this time.

- **Safety:**

- No major safety issues have been reported this month.

Prepared By: Nick Aden



	CEP	H&V	Level 1	E.Tower	SLD	EUP	CoGen (Non Prop G funded)
■ Current Bank	\$2,231,314	\$5,478,314	\$3,681,046	\$4,638,929	\$1,090,430	\$615,582	\$4,742,325
■ Remaining	(\$5,080,747)	\$557,127	(\$3,195,924)	(\$95,736)	\$21,446	\$615,582	\$3,685,985
■ Proposed	\$7,312,061	\$4,921,187	\$6,876,970	\$4,734,665	\$1,068,984	\$0	\$1,056,340
■ Approved	\$6,564,991	\$6,885,752	\$567,231	\$7,599,768	\$3,859,191	\$3,887,897	\$653,260