



Grossmont Healthcare District

May 2018 Prop G Board Report

Bi-Plane Cath Lab #1033

Reflection:



“It’s not what you look at that matters, it’s what you see.”

Henry David Thoreau

Overview



1. Regulatory Compliance
2. H&V Level 1 Surgery Build Out
3. The Plans/Past Milestones:
 - i-ii Surgery Suite, Infill Overview
 - iii - ix Past Milestones
4. Schedule
5. Budget
6. Snapshot on Sharp HealthCare Infill Project
7. Looking Ahead

EP Cath Lab #1032

1. Regulatory Compliance



Looking back: Ductwork, Overhead structural supports in Hybrid OR #1030



| Project | Safety Event | Infection Control Breach | Notice of Non-Compliance |
|---------------------------|--------------|--------------------------|--------------------------|
| Level 1 Surgery Build Out | 0 | 0 | 3 |

As of 5-23-18 **twelve** mechanical subcontract issues had been escalated to NNC's, and **nine** have been resolved. Resolution is anticipated on the remaining three within the next two weeks.

2. H&V Level 1 Surgery Build Out

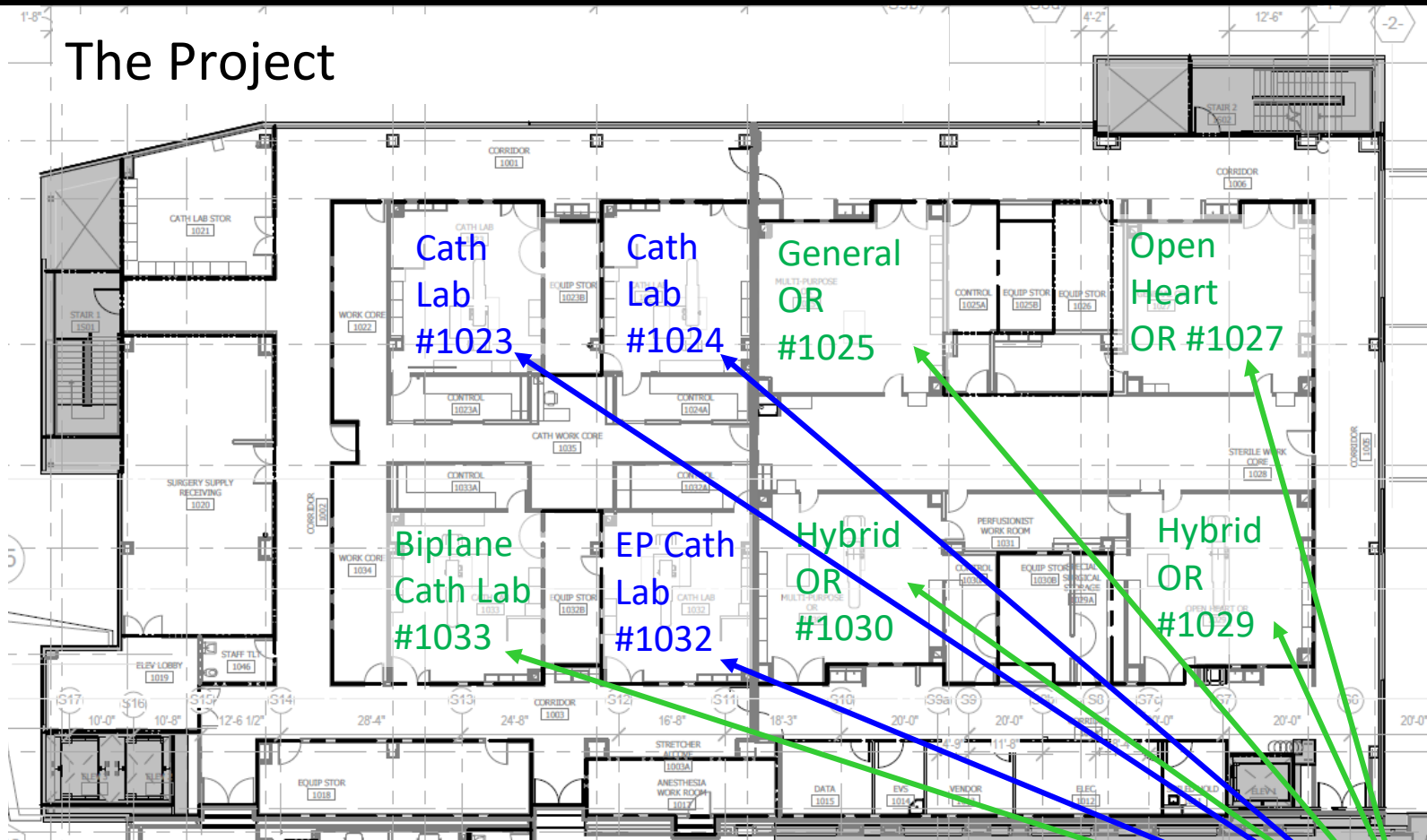
- Medical equipment installation complete in ORs #1025, #1027, #1029, #1030 & Cath Lab #1033; in progress in Cath Labs #1023, #1024 & #1032
- AE formal punch list is complete throughout
- Schedule delays: 65 days approved to date; advised that due to Philips medical equipment installation delays there may be an additional 13 day delay to 6-11-18
- Test & Balance of HVAC system underway
- Commissioning of the medical equipment system underway
- Commissioning of the electrical, HVAC systems started late May



Southwest Corridor: T-Bar grid, wall protection, flooring, fire alarm devices installed

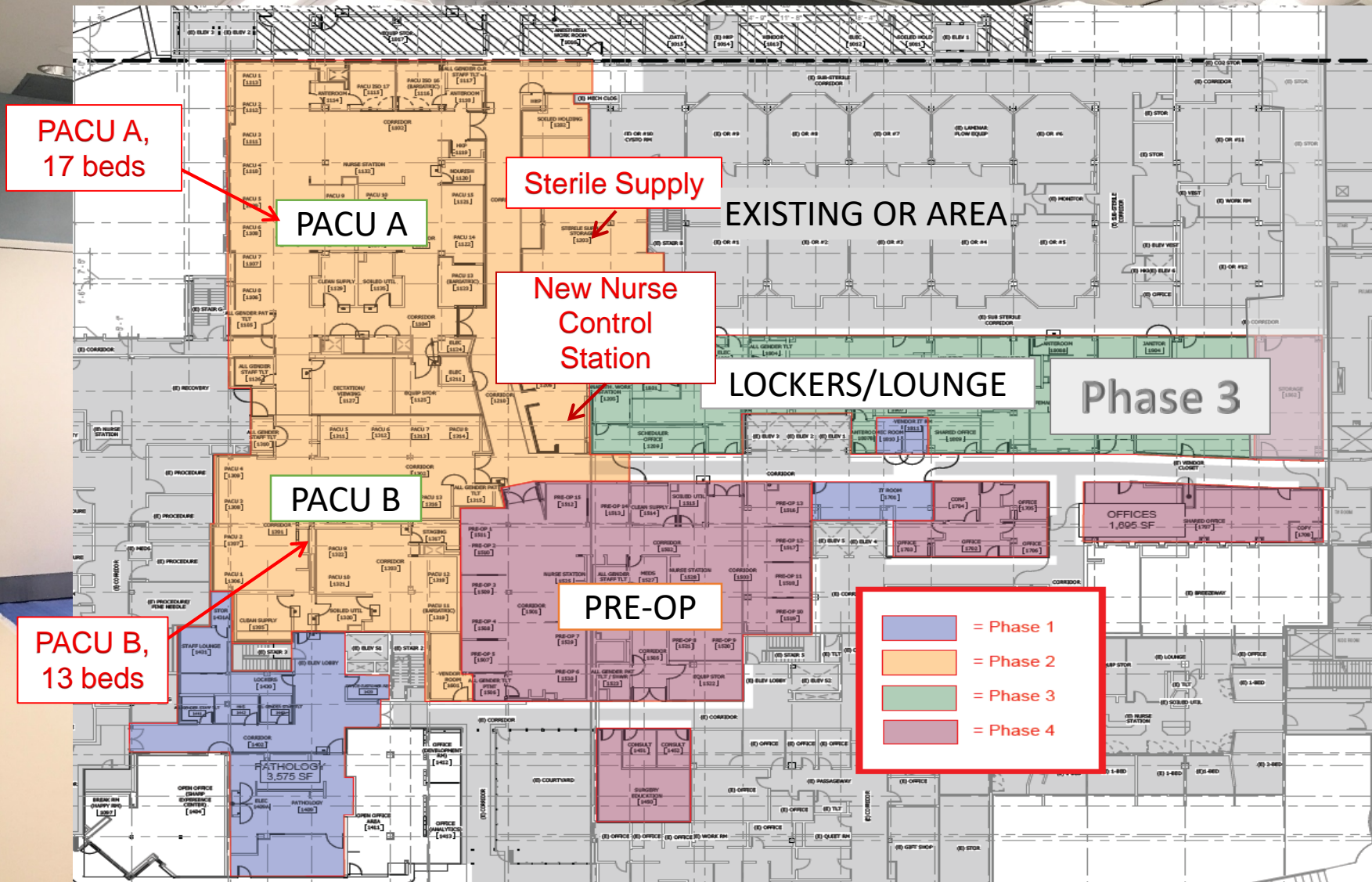
3i. Surgery Suite Overview Plan:

The Project



Medical equipment installation in progress in Cath Labs #1023, #1024, #1032; Complete in ORs #1025 & #1027, #1029, #1030; Cath Lab #1033

3ii. Sharp Infill Overview Plan:



3iii. October 2016 – Before Construction



3iv. April 2017: Installing Boom Supports for OR #1027



3v. June 2017: Framing the North Sterile Corridor



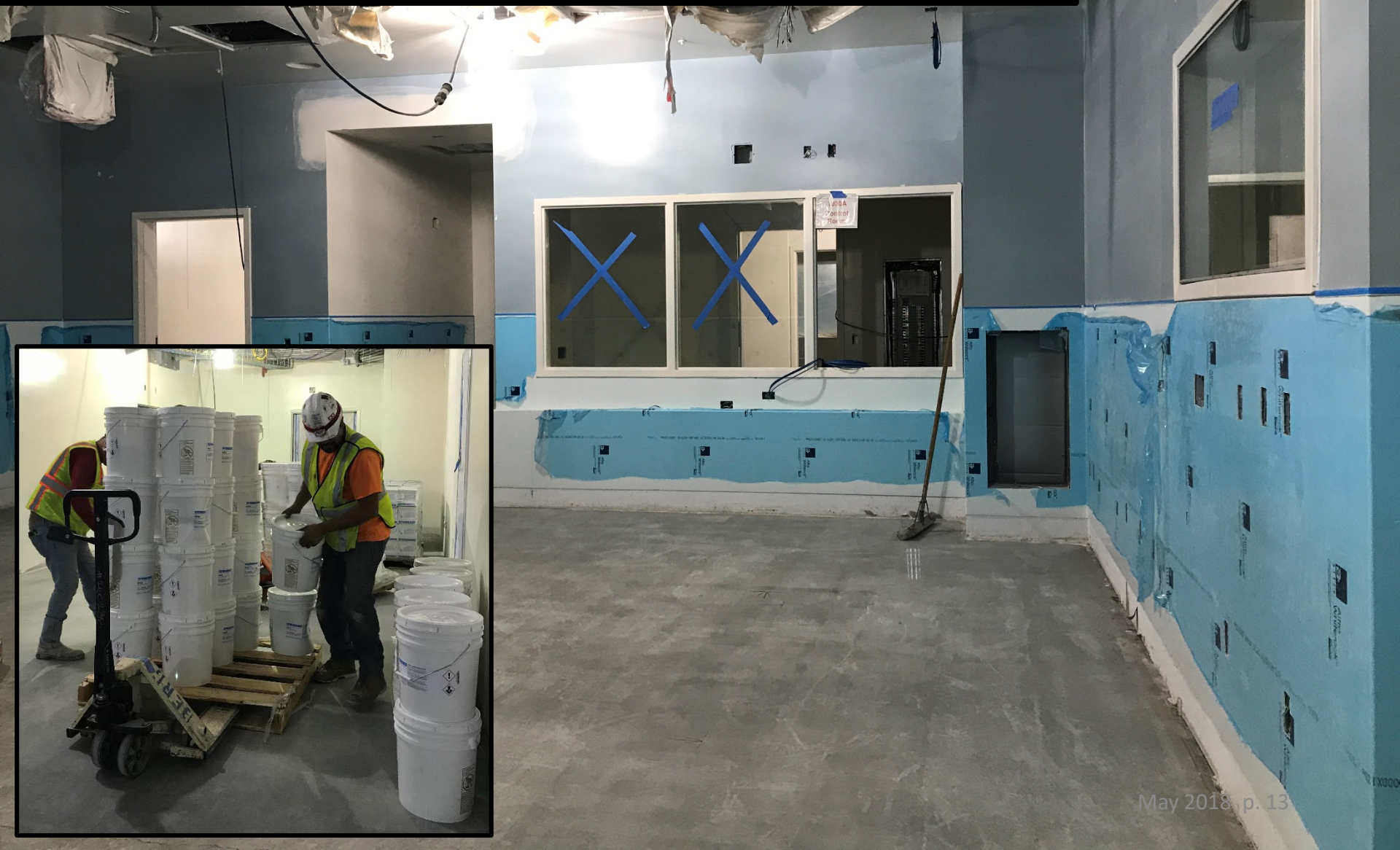
3vi. August 2017: Ductwork; Structural Framing, OR #1027



3vii. October 2017: Installing Wall Protection, OR #1025



3viii. December 2017: Ready to install Finish Flooring, OR #1030



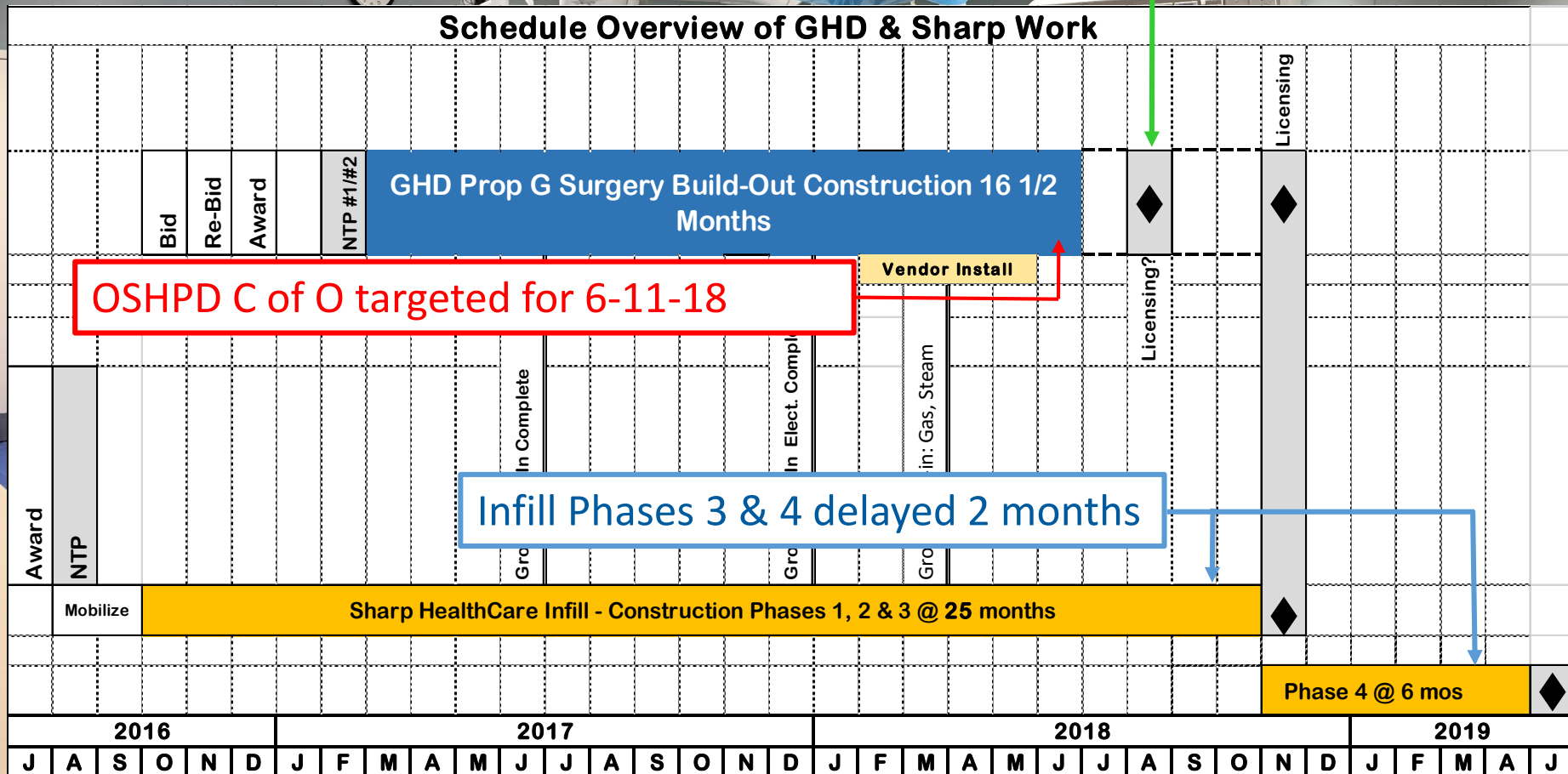
3ix. February 2018: Installing Medical Equipment, OR #1027



4. Schedule: Prop G + Sharp Infill

Once OSHPD issues a Certificate of Occupancy, the Hospital will apply for licensing from CDPH, requesting utilization of the Build Out ORs and Cath Labs BEFORE Infill Phase 3 is completed

Schedule Overview of GHD & Sharp Work



OSHPD C of O targeted for 6-11-18

Infill Phases 3 & 4 delayed 2 months

5. Budget



| Category | Project Name | Projected Cost At Completion (05/23/18) | Projected Cost At Completion (04/25/18) |
|-----------------------------|---|---|---|
| Current Funds Available | Total Prop G Building Fund (Bond and Settlement Proceeds, Interest Earned, Grants, Etc.) | \$ 260,982,543 | \$ 260,982,543 |
| Projects Completed | Central Energy Plant, ED-CCU, Heart & Vascular Bldg, East Tower Renovation, Early Utilities | \$ 225,834,531 | \$ 225,834,531 |
| | Remaining Prop G Building Funds | \$ 35,148,012 | \$ 35,148,012 |
| Projects Under Construction | H&V Level 1 Surgery Floor Buildout | \$ 34,194,527 | \$ 34,194,527 |
| | Forecast Potential Surplus | \$ 953,485 | \$ 953,485 |

6. Snapshot on Sharp HealthCare Infill Project

- Complete installation of casework, plumbing fixtures, solid surface tops
- Complete installation of flooring, corner guards, wall protection in Phase 2 area
- Complete installation of overhead devices & system
- OSHPD approval for Phase 2 issued 4/11/18
- Phase 3 underway



Gurney, curtains installed in new PACU



Central Nurse Control Station Casework Complete

7. Looking Ahead



- Complete Test & Balance on HVAC, electrical, medical equipment systems
- Complete Functional Performance Testing of essential systems
- Complete 3rd party commissioning of HVAC, electrical systems
- Work with Helix Water District to finalize an agreement wherein they will self-perform the installation of approximately 65 lineal feet of new water line
- Complete installation of medical equipment in Cath Labs #1023, #1024 #1032 (projected into early June);
- Complete construction Punch lists
- Issue Notice of Completion

A photograph of a brown deer standing on a sandy, rocky slope. The deer is facing right but looking back over its shoulder towards the camera. The background is filled with dense green bushes and shrubs. The ground is light-colored sand and rock.

Questions?