



Grossmont  
Healthcare District

October 2017 Prop G Board Report



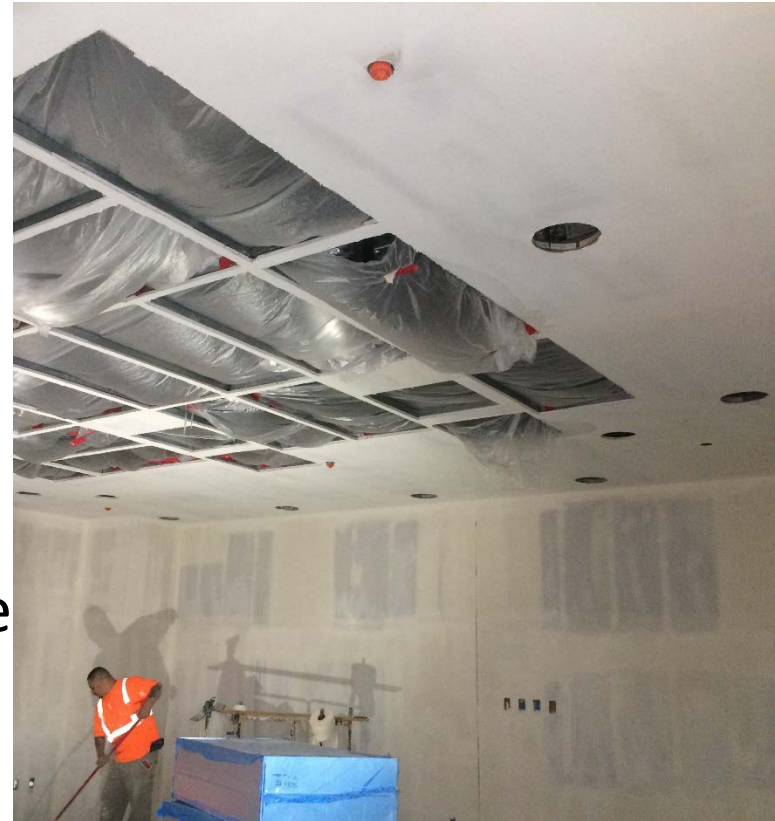
“Light tomorrow with today.”  
– Elizabeth Barrett Browning

Reflection

# Overview

October 2017

1. Regulatory Compliance
2. H&V Level 1 Surgery Build Out
3. The plans:
  - i. Sharp Infill/Build Out
  - ii. Surgery Suite Overview
4. Schedule
5. Budget
6. Snapshot on Sharp HealthCare Infill Project
7. Looking Ahead




#1025, #1027: Drywall Ceiling Installation Completed

# 1. Regulatory Compliance

October 2017



Equip. Rm. #1026: Drywall and overhead utilities complete, ready for paint

Project	Safety Event	Infection Control Breach	Notice of Non-Compliance
Level 1 Surgery Build Out	0	0	0 

# 2. H&V Level 1 Surgery Build Out

October 2017

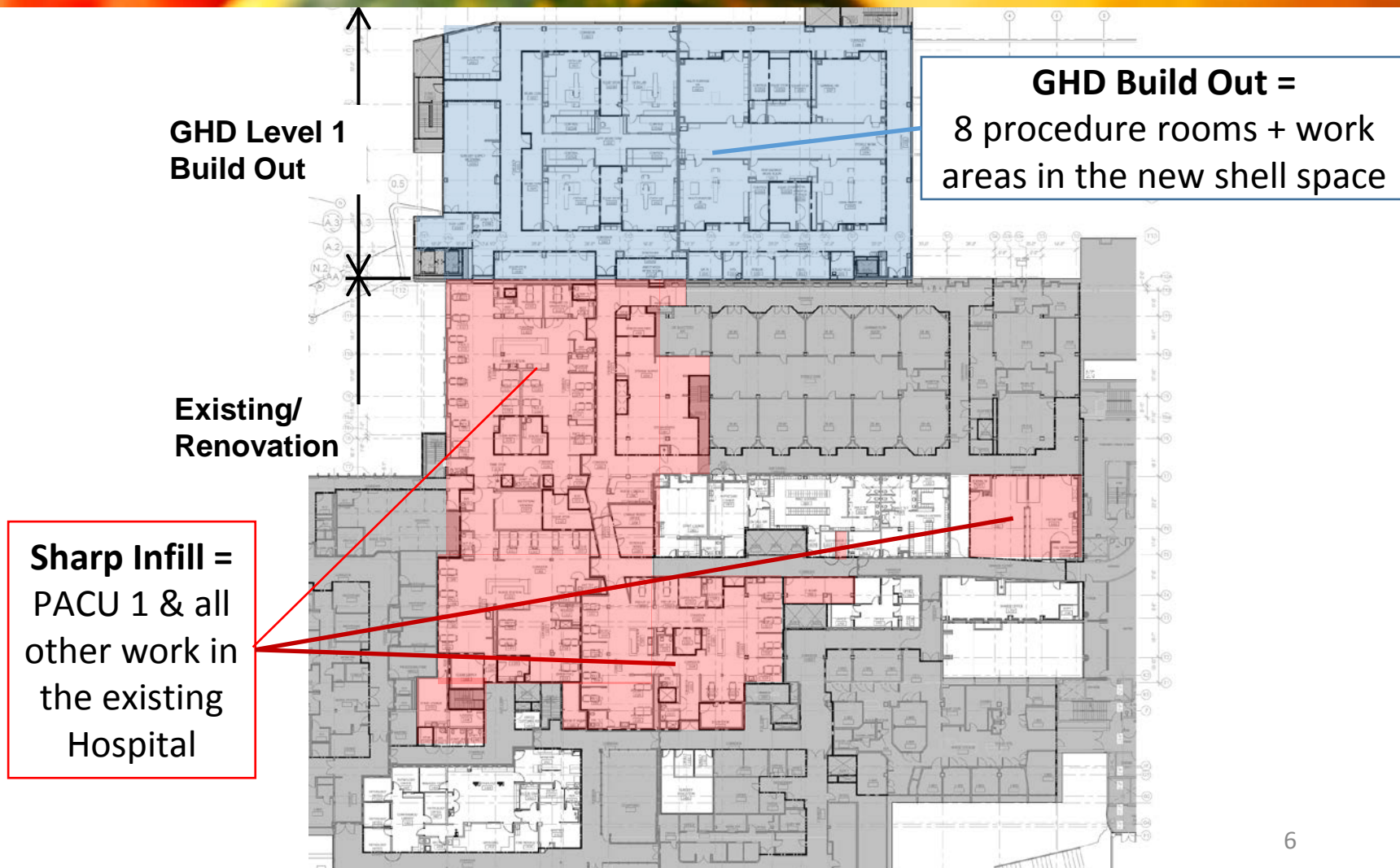
- Schedule delays: 9 new potential days advised due to modifications to existing conditions. 65 days approved to date
- Ceiling framing complete in all ORs; Installation of drywall ceilings complete in 2 rooms
- Modifications to existing duct work, electrical transformers underway
- Medical equipment installation scheduled to start 2-3-18



East Corridor: Overhead Utilities Installation is ongoing

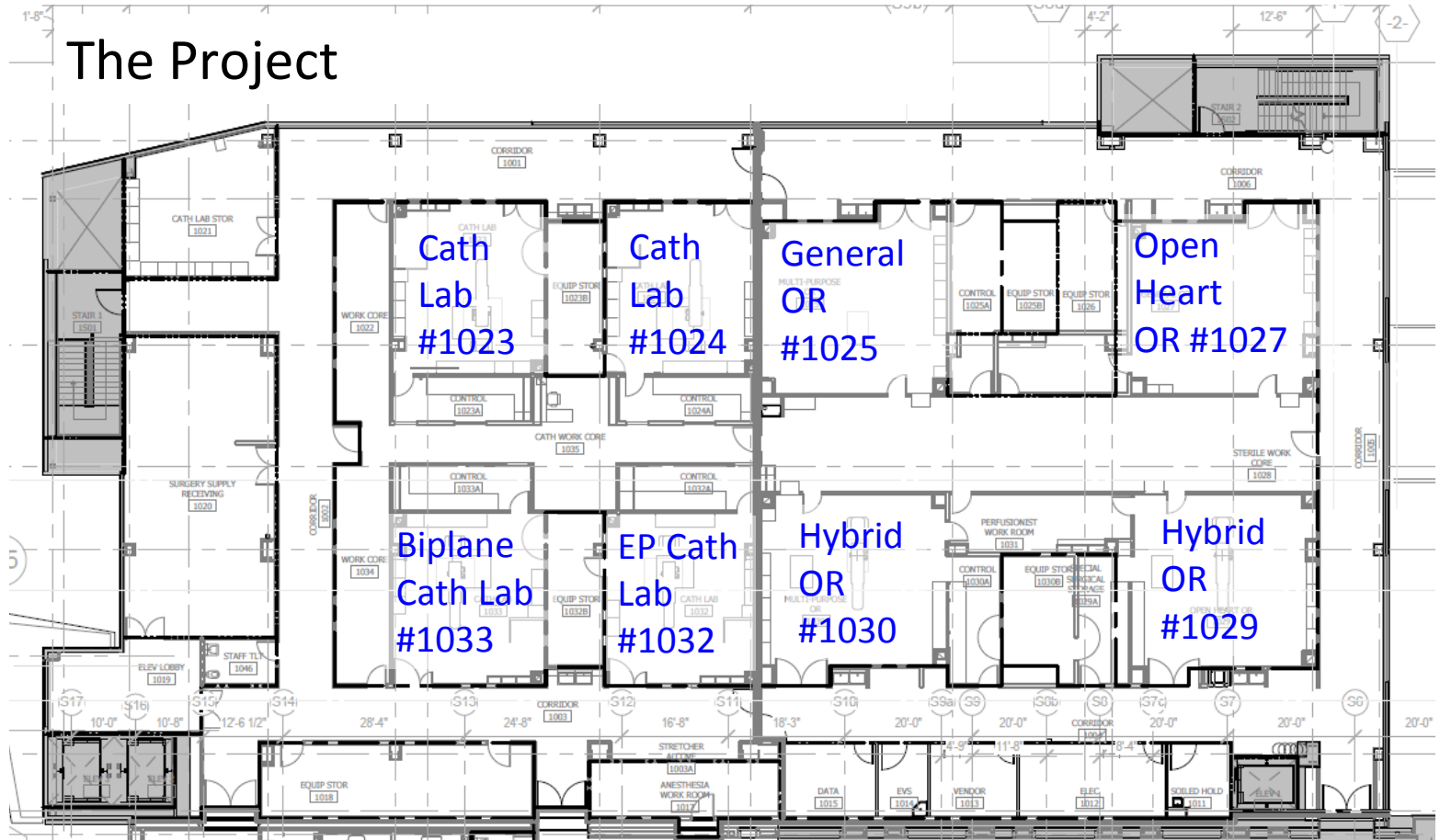
# 3i. Sharp Infill/GHD Build Out Plans

October 2017



# 3ii. Surgery Suite Overview Plan

October 2017



# 4. Schedule – Prop G

October 2017

We are here

																				Updated 10-25-2017				
Prop G Level 1 Surgery Build Out																				Forecasting 1 month Schedule Extension, Prop G				Licensing
Bid		Award		NTP #1/2	Construction															◆				
N	D	J	F	M	A	M	J	J	A	S	O	N	D	J	F	M	A	M	J	J	A	S		
2016			2017											2018										



# 5. Budget

October 2017

Category	Project Name	Projected Cost At Completion (10/25/17)	Projected Cost At Completion (09/20/17)
Funds Available	Total Prop G Building Fund (Bond Proceeds, Interest Earned, Grants, Etc.)	\$257,072,011	\$257,072,011
Projects Completed	Central Energy Plant, ED-CCU, Heart & Vascular Bldg, East Tower Renovation, Early Utilities	\$225,996,922	\$225,996,922
	Remaining Prop G Building Funds before Level 1 Surgery	\$31,075,089	\$31,075,089
Projects Under Construction	H&V Level 1 Surgery Floor Buildout	\$29,533,684	\$29,533,684
	<b>Potential Surplus</b>	<b>\$1,541,405</b>	<b>\$1,541,405</b>

# 6. Snapshot on Sharp HealthCare Infill Project

October 2017

- Level 1 Phase 2A demo & utilities safe-off ongoing
- Monokote patching & overhead layout/coordination started, future PACU 1
- Phase 2B demo to start, including Level 1 Sterile Storage and Decontamination
- Schedule delays continue, due to unforeseen conditions



Level 1 Demo of Walls & Utilities



Overhead Mechanical Duct Removal

# 7. Looking Ahead

October 2017

- Continue Completion of Overhead Work
- Continue final-cleaning of Overhead Utilities, installation of drywall ceilings, painting walls/ceilings
- Group Two Utilities Tie-In with Sharp Infill for electrical complete, medical gases rescheduled for December; Steam Tie-In postponed to December to simplify chlorination process
- Helix Waterline potholing, to determine a route for the completed waterline, continues, after proposed route rejected by Helix Water District



Questions?