


An aerial photograph of a rocky coastline. The rocks are dark and wet, with numerous tide pools. Several large, green sea anemones with many tentacles are prominent in the center and right. Smaller, yellowish-green anemones are scattered throughout. The water in the tide pools is a deep blue-green color. The overall scene is a vibrant, natural coastal environment.

Grossmont Healthcare District
Board Report – June 5, 2017



“All I know is that
I know nothing”.
—Socrates

Reflection

Overview


1. Regulatory Compliance
2. H&V Level 1 Surgery Build Out
3. Schedule
4. Budget
5. Snapshot on Sharp HealthCare Infill Project
6. Looking Ahead



West corridor of the Build Out:
Conduits for the tie-in to the
Infill Project

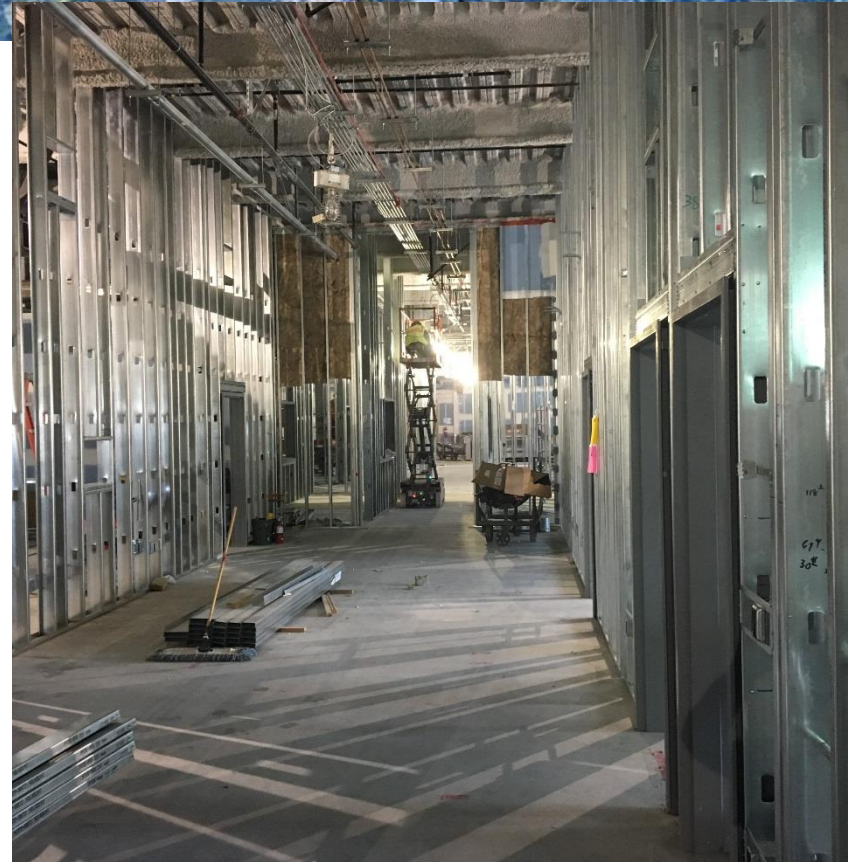
1. Regulatory Compliance

May 2017

Project	Safety Event	Infection Control Breach	Notice of Non-Compliance
Level 1 Surgery Build Out	0	0	0 

2. H&V Level 1 Surgery Build Out

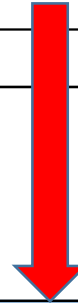
- Installation of overhead structural steel 99% complete
- Wall framing 95% complete
- Electrical, Mechanical, Plumbing rough-ins underway
- Quote for epoxy flooring upgrade ready for presentation; request for quote for wall protection anticipated in May
- Other Change Orders in process:
 - Trailer replacement
 - IOR change



Looking north at the sterile corridor. Framing nearly complete/door frames set

3. Schedule – Prop G

We are here



																Updated 5-30-2017				
Prop G Level 1 Surgery Build Out																Licensing				
Bid		Award		NTP #1/2	Construction											◆				
N	D	J	F	M	A	M	J	J	A	S	O	N	D	J	F	M	A	M	J	
2016			2017										2018							

4. Budget

Category	Project Name	Projected Cost At Completion (05/30/17)	Projected Cost At Completion (04/21/17)
Funds Available	Total Prop G Building Fund (Bond Proceeds, Interest Earned, Grants, Etc.)	\$256,809,326	\$256,809,326
Worst Case Forecast for Completed Projects	E Tower Phase 1	\$249,566	\$249,566
	Early Utilities and North Dock	\$13,313,098	\$13,313,098
	ED-CCU	\$40,514,579	\$40,514,579
	CEQA	\$104,211	\$104,211
	Central Energy Plant	\$58,986,273	\$59,132,659
	Heart and Vascular	\$61,325,546	\$61,573,759
	East Tower Renovation	\$39,688,055	\$39,756,549
	South Dock / Level B Seismic Upgrades	\$11,998,902	\$11,998,902
Project Under Construction	H&V Level 1 Surgery Floor Build Out	\$29,413,684	\$29,466,978
	Total Forecast Project Costs	\$255,593,914	\$256,110,301
	Bond Issuance Costs (Current Projection)	\$498,613	\$498,613
	Total Worst Case Scenario for Projects Completed or Under Construction	\$256,092,527	\$256,608,914
	Potential Surplus	*\$716,799	\$200,412

*See following page for details of changes from prior month

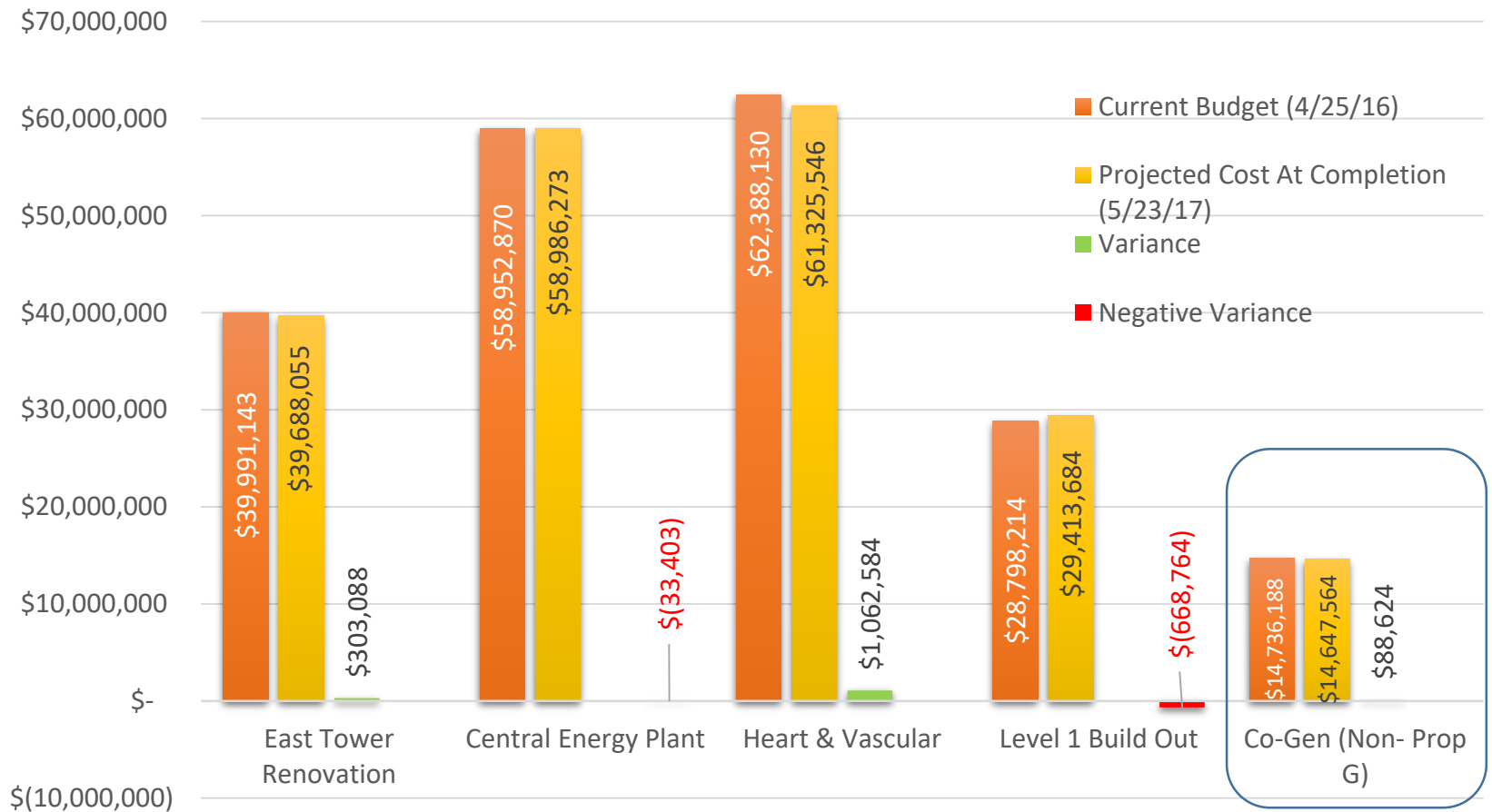
4. Budget Surplus Details:

- Central Energy Plant: Savings of \$146,386 due to closing out residual balances from Consultant's contracts
- Heart & Vascular: Savings of \$248,213 due to closing out residual balances from Consultant's contracts
- East Tower: Savings of \$68,494 due to closing out remaining Sharp PM budget and Consultant's contracts
- Level 1: Savings of \$53,294 due to realigning the forecast Contingency budget

TOTAL: \$516,381 potential savings increase over last month

Board Approved Budget vs. Worst Case Forecast

May 2017



5. Snapshot on Sharp HealthCare Infill Project

- Installation of new air handler, duct stands, and duct on roof ongoing
- Drywall and overhead utilities complete in new Histology Lab
- New Cart Wash, new stainless steel exhaust duct and fan operational
- Phase 1 unforeseen conditions projected to add 39 days to schedule; forecasting \$2.2M in Change Orders
- Project 20% complete; 49% of contingency funds projected expended



Air Handler & Duct Install



Drywall-new Histology Lab

6. Looking Ahead

- Updated Master Budget is planned for Board review at the July 21st Board Meeting
- Replacement of Prop G trailer is scheduled for late June



Questions?