



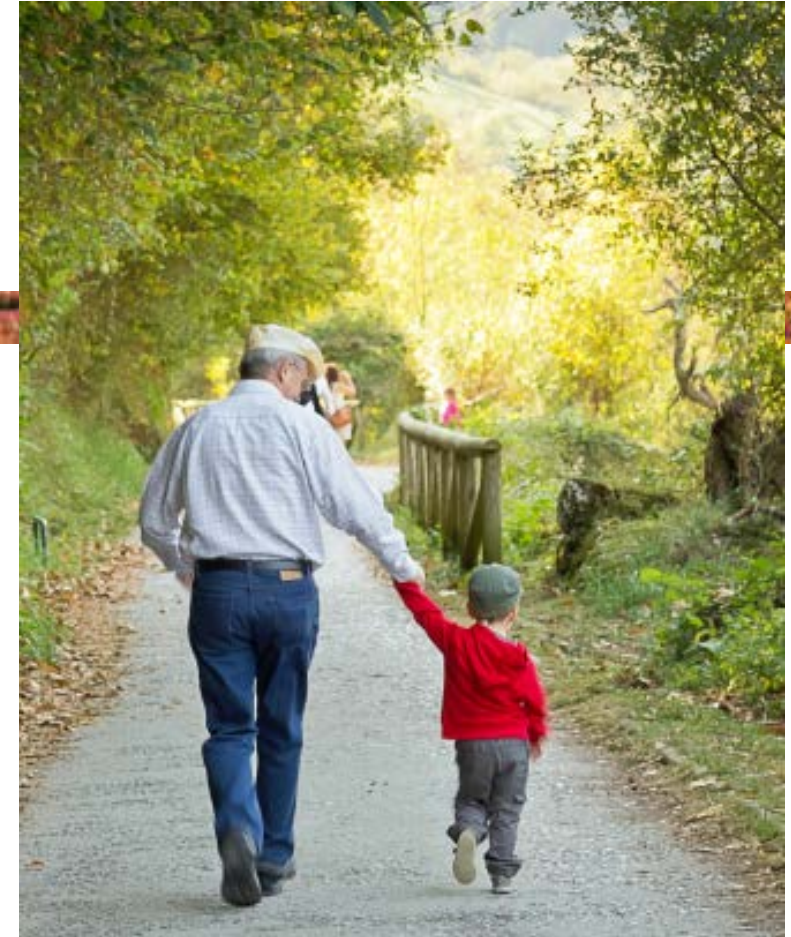
September Progress Report

**Grossmont Healthcare District
Board Report – October 3, 2016**

Reflection

If you shift your focus from yourself to others, extend your concern to others, and cultivate the thought of caring for the well being of others, then this will have the immediate effect of opening up your life and helping you to reach out.

- Dalai Lama



Caring Strengthens Your Immune System

University of Michigan research study concludes kinder people live an average of 9 years longer.

Overview

1. Regulatory Compliance
2. Wrapping Up
3. Launching Surgery Build Out
4. Schedule Status
5. Budget Status
6. Snapshot Status on Infill
7. Looking Ahead

1. Regulatory Compliance

September 2016

Project	Safety Event	Infection Control Breach	Notice of Non Compliance
CEP	0	0	3
H&V	0	0	0
Surgery Build Out	na	na	na



2. Wrapping Up – Central Energy Plant

- Tracking to complete all construction by November 14, 2016
- Final tasks include:
 - Seismic bracing for chilled water piping in the existing CEP needs design approval
 - Medical Gas & cold water point of connections
 - Condensate pump return supports need design & approval



HVSB Wall
Removed



O2 Tanks
Relocated

2. Wrapping Up – Heart & Vascular

- Tracking to complete all construction by December 1, 2016
- Final tasks include:
 - Getting to an acceptable TAB (Test Air Balance) Report for Level B
 - Completion of Helix Water Line connections
 - Easement had to be changed
 - Inspector raised concerns with construction standards for the current work that need to be addressed



Other Work to Resolve

- Helix Water District
 - Inspector raised concerns with GHD letter to evaluate relocation of the existing line
 - Relocation of the existing line is currently not in any contractor's scope of work
 - Budget includes a Worst Case Forecast for \$250K added to Level 1

Launching Surgery Build Out

- With Contract award a very busy period of work is launched to achieve NTP #1 and NTP #2

Let's dig deeper into this work ...



Work required prior to NTP #1

Documents to be filed Prior to NTP 1

Site Improvement Plan for the Laydown & Parking Area

Listing of Substitute Materials & Equipment

Injury and Illness Prevention Plan (IIPP) and Code of Safe Practices (CSP) Affidavit Form

Contractor's Industrial Safety Record Form

Performance Bond

Payment Bond

Contractor's Certificate Regarding Workers' Compensation

Work required, continued ...

Documents to be filed Prior to NTP 1

Certificate of Insurance – Workers’ Compensation & Employers’ Liability Insurance

General Liability Certificate of Insurance

Insurance Endorsement – General Liability Insurance

Builders’ Risk Certificate of Insurance

Insurance Endorsement – Builders’ Risk “All Risk” Insurance

Pollution Liability Certificate of Insurance

Insurance Endorsement – Pollution Liability Insurance

Work required prior to NTP #2

Documents to be filed prior to NTP 2

Injury and Illness Prevention Plan

Gross Wage Percentages

Permits & Licenses

Site Improvement Plan for the Staging Area

Site Access & Traffic Control Plan

Schedule of Values

Conformed Bid Documents

Principal staff assignments

Detailed Construction Schedule

Demolition Plan

Special Requirement

Modify contract days, LD milestones & adjust for vendor install dates

Work required, continued ...

Documents to be filed prior to NTP 2

Emergency Plan

Utility Disconnection Plan

Special Requirement

Submittal Schedule List

Contractor Quality Control Plan

Mobilization & Staging Plan

List of Submittals & Deferred Approvals

Special Requirement

Master Infection Control Plan

Special Requirement

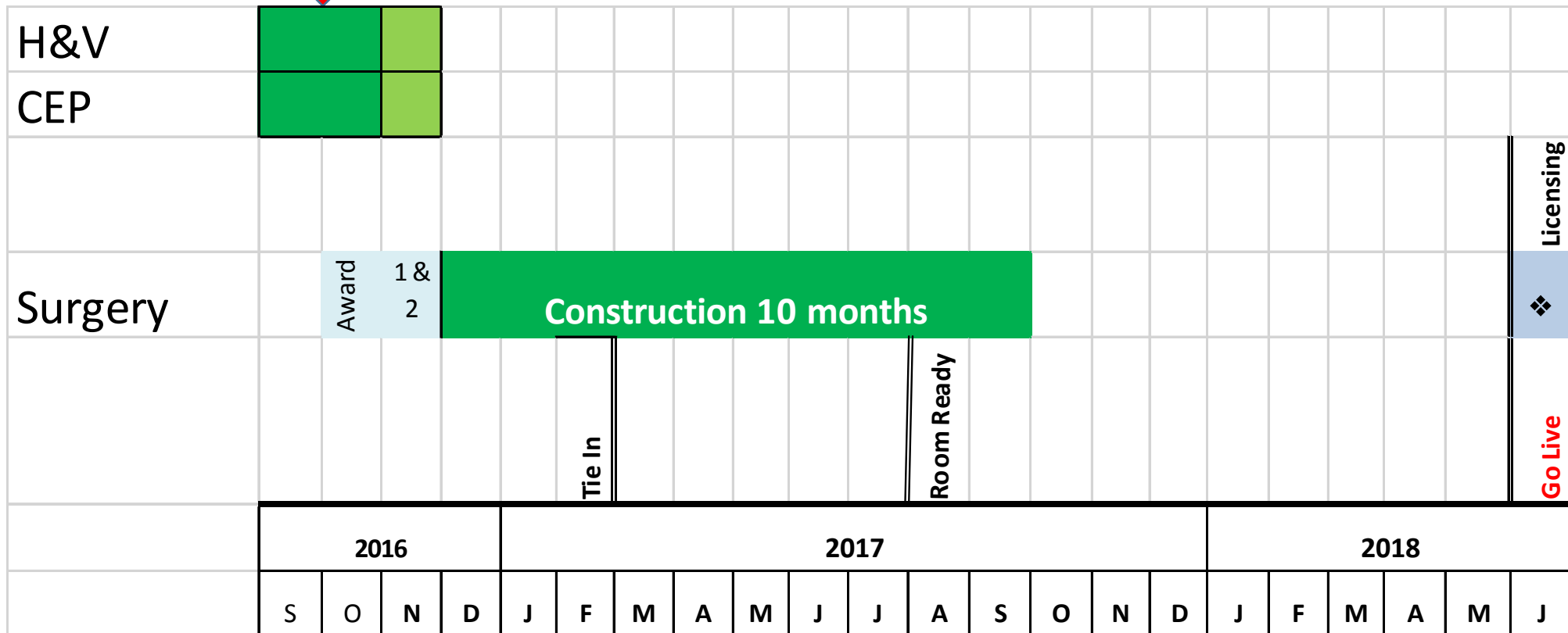
SWPPP Information

Verification of As-Built Condition of Site

Estimate of Total Debris

4. Schedule Status

We are here

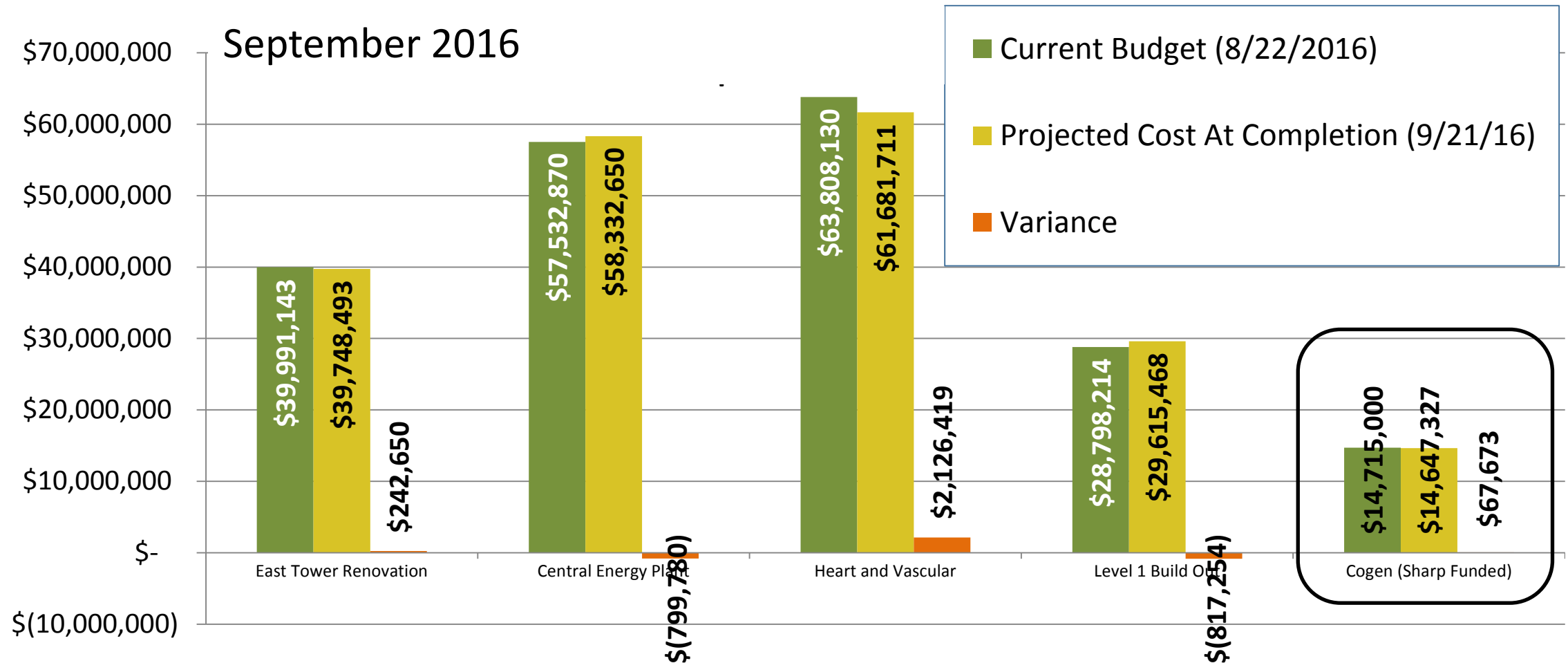


5. Budget Status

Category	Project Name	Projected Cost At Completion (9/21/16)	Projected Cost At Completion (8/23/16)
Funds Available	Total Prop G Building Fund (Bond Proceeds, Interest Earned, Grants, Etc.)	\$ 256,809,326	\$ 256,809,326
Worst Case Forecast for Projects Completed or Under Construction	E Tower Phase 1	\$ 249,566	\$ 249,566
	Early Utilities and North Dock	\$ 13,313,098	\$ 13,313,098
	ED-CCU	\$ 40,514,579	\$ 40,514,579
	CEQA	\$ 104,211	\$ 104,211
	Central Energy Plant	\$ 58,332,650	\$ 57,471,547
	Heart and Vascular *	\$ 61,681,711	\$ 62,361,476
	East Tower Renovation	\$ 39,748,493	\$ 39,962,991
	South Dock / Level B Seismic Upgrades	\$ 11,998,902	\$ 11,998,902
	Bond Issuance Costs (Current Projection)	\$ 498,613	\$ 498,613
		Total Worst Case Scenario for Projects Completed or Under Construction	\$ 226,441,823
	Remaining Prop G Building Funds before H&V Level 1 Surgery Floor Build Out Project	\$ 30,367,503	\$ 30,334,343
Projects Not Under Construction	H&V Level 1 Surgery Floor Build Out (Current Estimate, Contract and Board Award Pending)*	\$ 29,615,468	\$ 28,798,214
	Potential Surplus	\$ 752,035	\$ 1,536,129

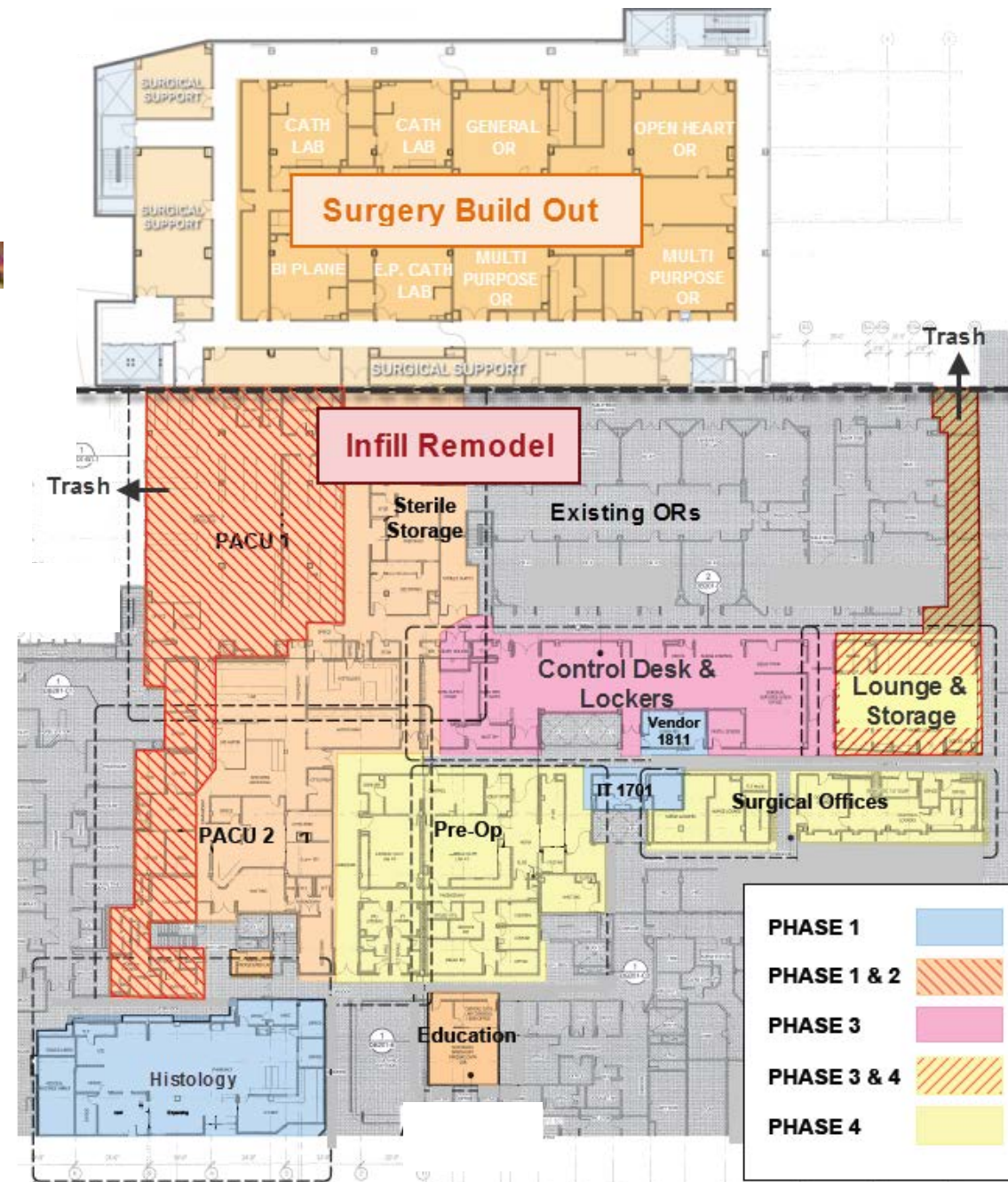
- * Note: In order to be able to close out the Heart & Vascular project, two funding items have been moved to the Level 1 project:
- The P-Tube Project will continue to have costs through the build out of Level 1; and
 - A Worst Case Forecast of \$250K to relocate the existing Helix Water Line.

Board Approved Budget vs. Worst Case Forecast



6. Snapshot Status on Infill

- Design Build Contract awarded to Swinerton in July for \$26,087,209
- Major accomplishments to date:
 - Alternate 1 - Relocation of SPD to Level A accepted & final design approved by OSHPD.
 - Alternate 2 – Reduce planned Pathology / Histology construction on Level 1 by 70%. Design approved by SGH.
 - Design Build Team is mobilizing for a construction start late this month.



7. Looking Ahead

- Continue wrap up work on CEP and H&V
- Work with McCarthy to complete all requirements for NTP #1 & start work on NTP #2 requirements
- Initiate coordination meetings between McCarthy & Swinerton
- Hold first coordination meeting between McCarthy, Phillips & Steris
- Present briefing on the joint Infill & Surgery projects at the Hospital Employee Forums





Questions?