



Prop G Monthly Project Report March 2015



Reflection

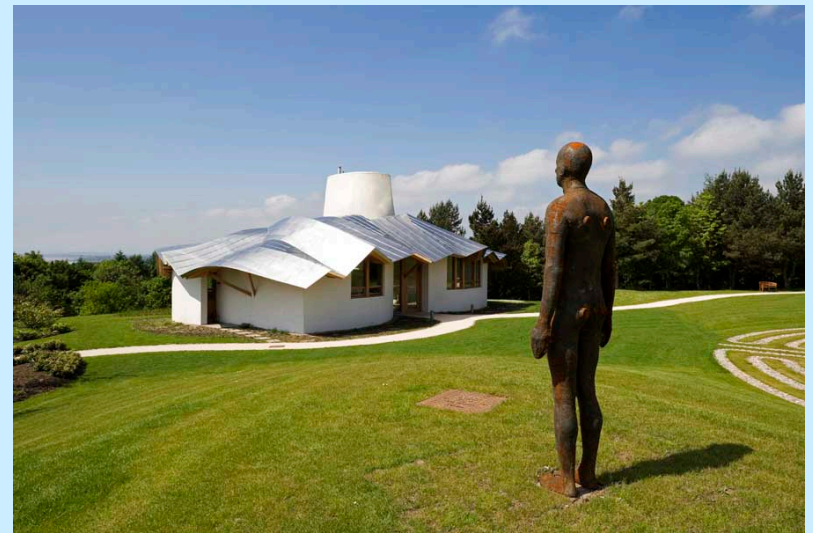
“Education, housing and hospitals are the most important things for society.”

Zaha Hadid



The Maggie's Centre in Fife, was designed by Zaha Hadid and opened in November 2006 at the Victoria Hospital.

Maggie's Centre's are a network of drop-in centers in Great Britain, which aim to help anyone who has been affected by cancer. They are not intended as a replacement for conventional cancer therapy, but as a caring environment that can provide support, information and practical advice. They are located near, but are separate from, existing NHS hospitals



Frank Gehry design

Overview

1. Major Events from March
2. Schedules
3. Project Status
4. Budgets
5. Looking Ahead




1. Major Events from March

1. A meeting was held between members of the GHD Board and Senior Leadership of Sharp HealthCare to discuss funding shortfalls and potential sources of additional funds.
2. Three safety incidents/concerns reported during the month.
3. Efforts to resolve CEP design issues have been very successful.

2. Schedule

Updated 1-23-15

Projects	2014			2015				2016				2017				2018				
	Q2	Q3	Q4	Q1	Q2	Q3	Q4	Q1	Q2	Q3	Q4	Q1	Q2	Q3	Q4	Q1	Q2			
CEP & Co-Generation	Construction																			
E. Tower - All Floors	Construction																			
Heart & Vascular w/ Level A & B	Construction																			
H&V - Surgery Build Out																				
Prop G Scope									Construction											
Sharp Scope									Construction											


 CDPH

CEP and H&V dates are per McCarthy
 “Roundup” meeting projections



3. Project Status – East Tower

- Overall project completion is at 67%
- Forecast Completion is 426 days behind original Contract Completion.
- 4th Floor completion is now planned for June 5, 2015
- One safety incident occurred in March. An emergency power circuit to the 5th floor was inadvertently disrupted for about 1 hour after a worker improperly utilized a conduit to maneuver rolling scaffolding on which he was working. The worker was removed from the project for a three day duration.

3. Project Status – East Tower Continued

- Headwall units are installed in all patient rooms. Installation of the mural tile in patient rooms has commenced. The 4th floor air handler and ductwork installation in the roof penthouse is ongoing.
- New artwork has been purchased (by Sharp) and is pending installation on Level 2. New artwork has been installed on Level 3:

3. Project Status – East Tower Continued



3. Project Status - Central Energy Plant

- Overall project completion is at 91%
- Forecast completion is 215 days behind the contract completion date. The Contractor has suggested that the total delay impact cost may far surpass 215 days.
- The last of the interior wall framing modifications are being completed.
- Restroom tile and finishes are being completed.

3. Project Status - Central Energy Plant

continued

- Piping and electrical conduit in the utility tunnel to the H&V vault is being installed.
- The trash enclosure at the North end of the project is being finalized.
- The precast utility tunnel lids were completed and are awaiting shipment.
- Curbs and gutters at the North and Southwest are poured.

3. Project Status - Central Energy Plant continued

- BIM coordination and planning of work in the Existing CUP is finished.
- Utility Trellis footings are excavated and are being set with rebar at the North riser and the South spread footings.
- Rule 21 switchgear structural pad is being formed and poured.



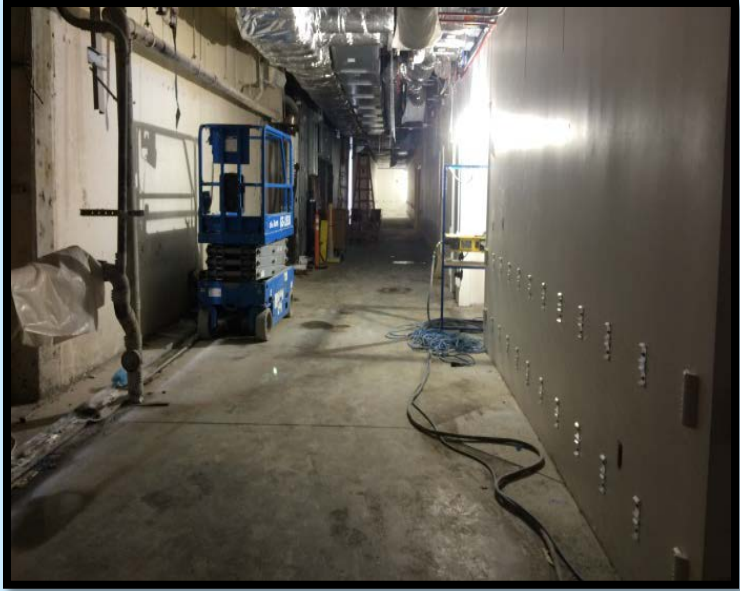
3. Project Status - Heart and Vascular

- Overall project completion is 77%
- Forecast completion is 215 days behind the Contract Completion date
- There were two safety related events in March.
 - Unsafe scaffolding was found in a mechanical penthouse. The scaffolding was removed from the site that day and new compliant scaffolding was erected. No injuries occurred.
 - A worker fell and broke his ankle in the staging area while using equipment to cut reinforcing steel. McCarthy has established new protocol that eliminates “brute force” required tools.

3. Project Status - Heart and Vascular Continued

- Majority of exterior skin was completed, incl. stucco, louvers, windows
- Roof work was completed
- Pneumatic tubes interchange room – majority of equipment is installed
- Level B interior build-out ongoing, paint commenced, mechanical and electrical equipment installation ongoing
- Level A interior finishes are ongoing
- Level 1 interior build-out ongoing, walls are framed and utility rough-in has started

3. Project Status - Heart and Vascular Continued



4. Budget Contingency Funds – 3-25-15

Significant Changes since Feb. Report

Surgery Floor

- Added Proposed cost of \$210k for 1/2 time District Liaison (21 Months)

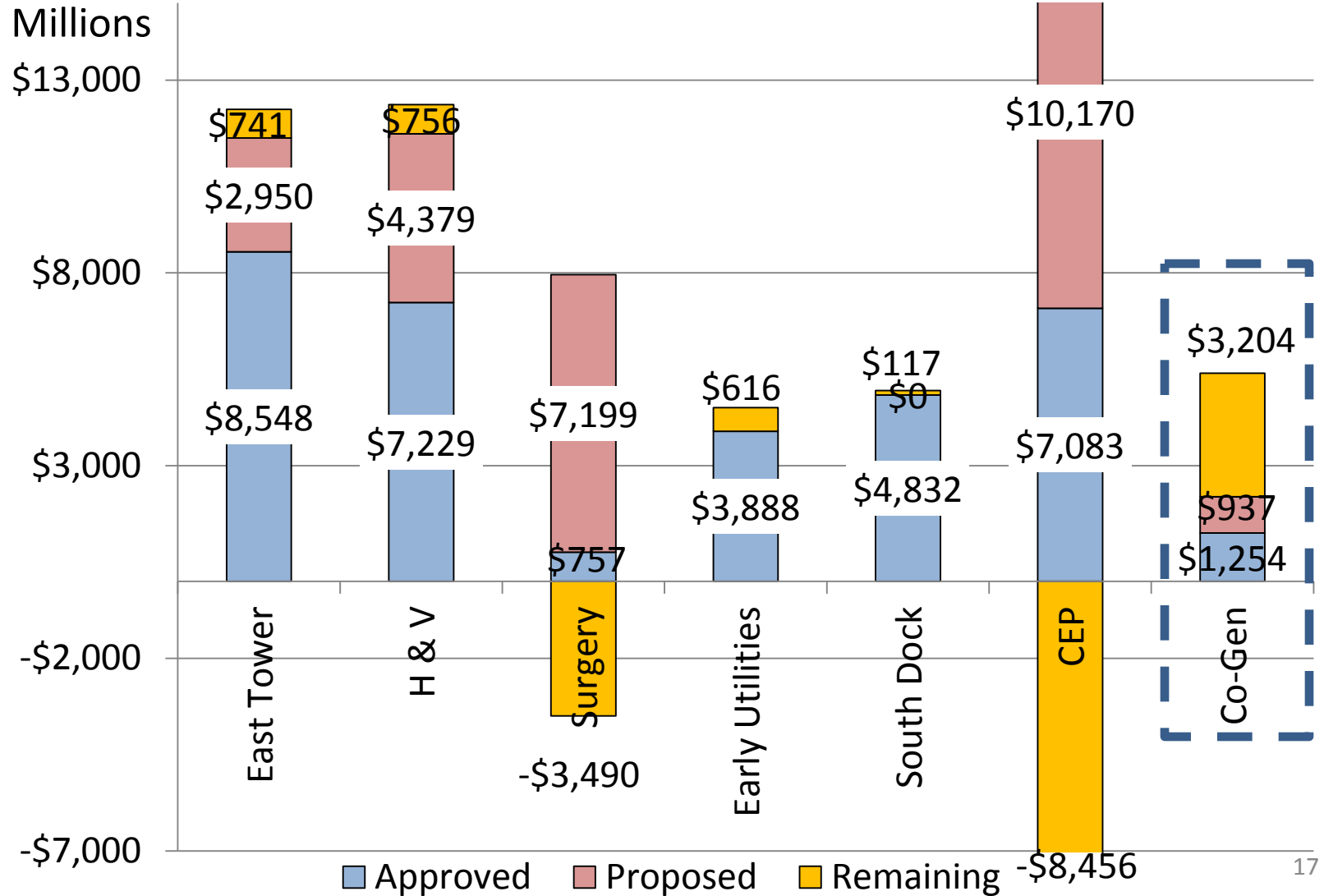
South Dock

- Increased Approved amount \$1M to reflect delay settlement

Central Energy Plant

- Increased Proposed amount \$3.3M to cover worst case potential for delay related costs and to cover addition potential Project Management/ Commissioning costs.

4. BUDGET: CONTINGENCY FUNDS- 3/25/15



5. Looking Ahead

- Board Prop G Budget Workshop
- Continue Pull Planning efforts
- Work is in process to assess revised SPC 4 criteria. Results should be available late summer

