

Prop G Monthly Progress Report

March 2016



“My motto was always to keep swinging. Whether I was in a slump or feeling badly or having trouble off the field, the only thing to do was keep swinging.”

Hank Aaron



Overview



1. Major Events from March
2. Schedules
3. Project Status
4. Budgets
5. Looking Ahead



1. Major Events in March

- There were no reportable safety incidents in March
- The new CoGen system connection to the grid was completed
- Paving between CEP and H&V was completed
- Pneumatic Tube System was entered into service

2. Schedules

Updated 1-15-16	2016				2017				2018				2019			
Projects	Q1	Q2	Q3	Q4	Q1	Q2	Q3	Q4	Q1	Q2	Q3	Q4	Q1	Q2	Q3	Q4
CEP & Co-Generation																
Heart & Vascular w/ Level A &																
H&V - Surgery Build Out										CDPH 						
Prop G Scope				Construction										CDPH 		
Sharp Scope*			Construction													

*Due to OSHPD permit realignment, the Sharp portion can be bid prior to the Prop G portion of the Level 1 Build Out.

3. Project Status

Heart and Vascular

- The project is 93% complete
- Final work and documentation is being finalized for occupancy of Level B the first week of April
- The Contractor is planning for final utility connections to existing buildings and air handler removal
- Pipe for the steam line was ordered based on the revised design that eliminates the vault
- The Level B “Punch Through” into the East Tower was completed

Heart and Vascular



Elevator Pit Ready for State Inspection



Level B Floor Ready For Clear Sealer

Heart and Vascular



Level B "Punch Through" in EVS Closet

Heart and Vascular



Asphalt Paving Between H&V and CEP

3. Project Status

Central Energy Plant

- The project is 96% complete
- The flex connectors for the existing plant utilities have been ordered
- Architect punchlist has started in the building
- CoGeneration system has been connected to the grid
- Temporary O2 fill line for the O2 farm has been installed
- Landscaping was completed

Central Energy Plant



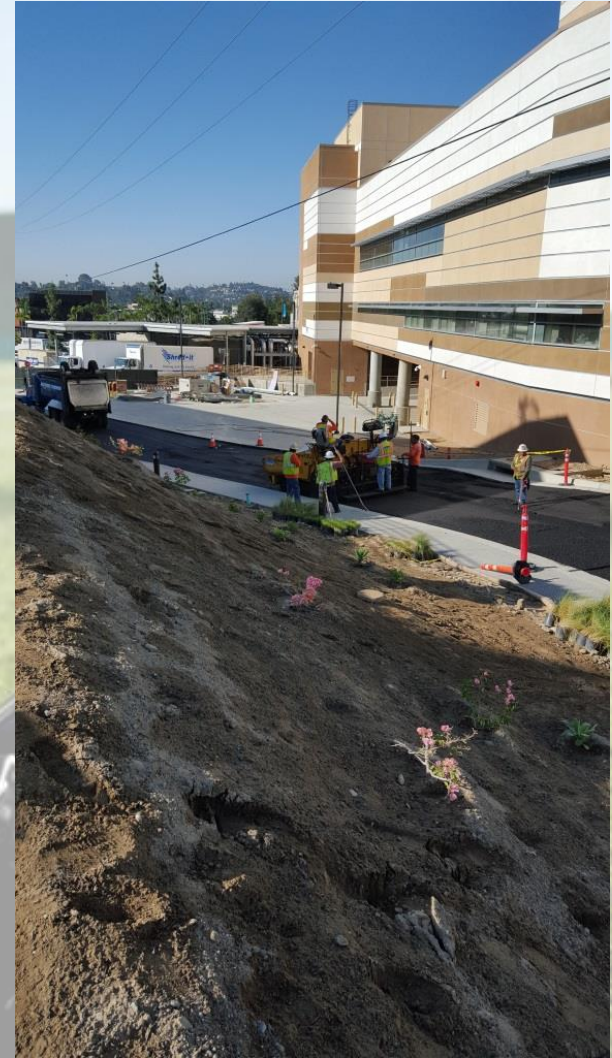
Rule 21 Switch Gear

Central Energy Plant



Generator For Shut Down of High Voltage Switch Gear

Central Energy Plant



Landscaping at CEP

4. Budget

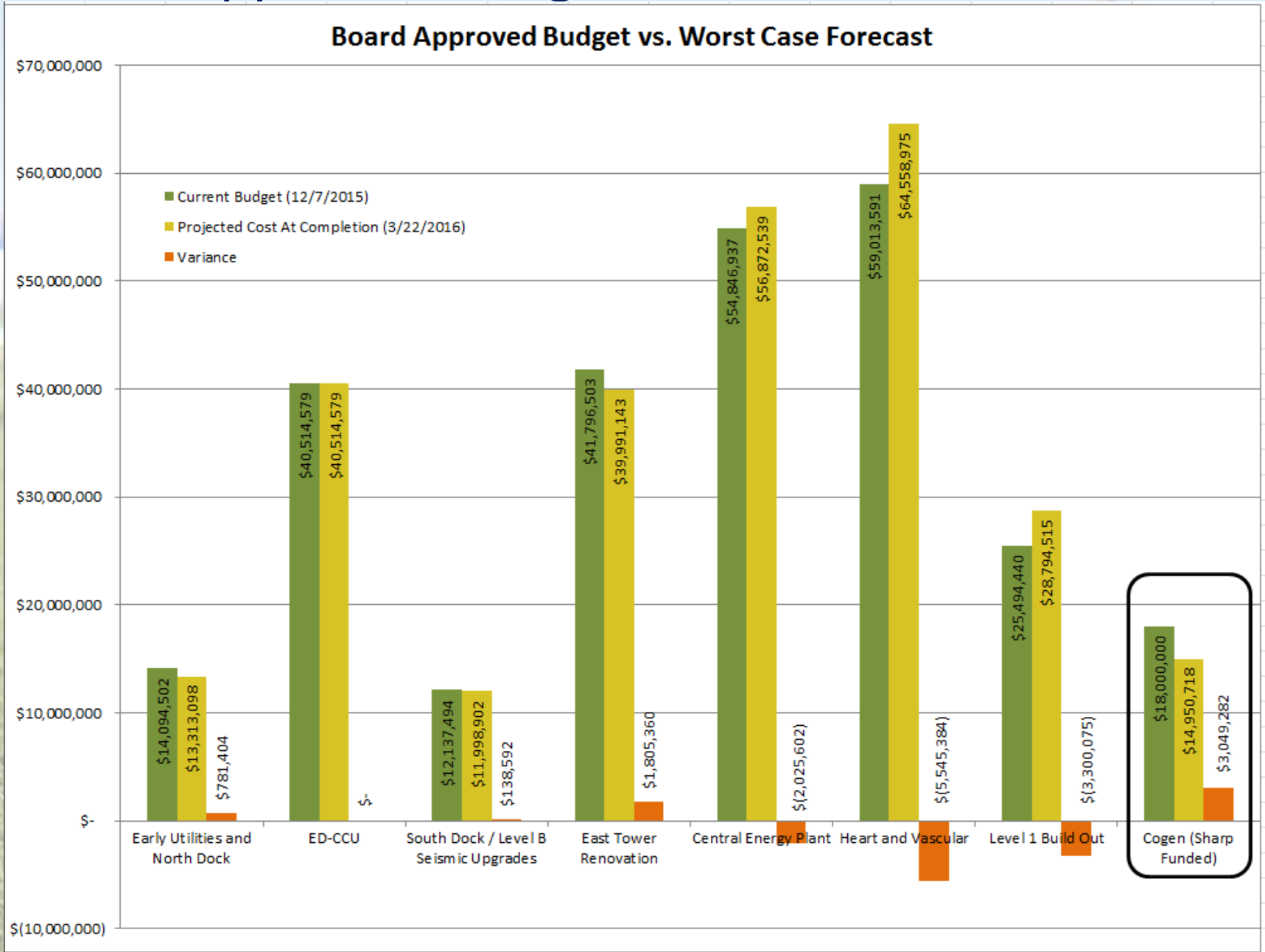
Available Funds vs. Worst Case Forecast

Category	Project Name	Projected Cost At Completion (3/22/2016)	Projected Cost At Completion (2/18/2016)
Funds Available	Total Prop G Building Fund (Bond Proceeds, Interest Earned, Grants, Etc.)	\$ 256,809,326	\$ 256,809,326
	Funds designated for former HOTC project (Not Presently Committed by Board*)	\$ (7,500,000)	\$ (7,500,000)
	Interest earned designated for former HOTC project (Not Presently Committed by Board*)	\$ (246,400)	\$ (246,400)
	Funds Available for Current Projects	\$ 249,062,926	\$ 249,062,926
Worst Case Forecast for Projects Completed or Under Construction	E Tower Phase 1	\$ 249,566	\$ 249,566
	Early Utilities and North Dock	\$ 13,313,098	\$ 13,313,098
	ED-CCU	\$ 40,514,579	\$ 40,514,579
	CEQA	\$ 104,211	\$ 104,211
	Central Energy Plant	\$ 56,872,539	\$ 56,792,059
	Heart and Vascular	\$ 64,558,975	\$ 64,414,346
	East Tower Renovation	\$ 39,991,143	\$ 39,991,143
	South Dock / Level B Seismic Upgrades	\$ 11,998,902	\$ 11,998,902
	Bond Issuance Costs (Current Projection)	\$ 498,613	\$ 811,093
	Total Worst Case Scenario for Projects Completed or Under Construction	\$ 228,101,626	\$ 228,188,997
	Remaining Prop G Building Funds before H&V Level 1 Surgery Floor Build Out Project	\$ 20,961,300	\$ 20,873,929
Projects Not Under Construction	H&V Level 1 Surgery Floor Build Out (Current Estimate, Bid and Board Award Pending)**	\$ 32,794,515	\$ 32,794,515
	Sharp Commitment per 3/18/2015 Meeting (H&V Level 1 Surgery Floor Build Out Cost Offset)	\$ (4,000,000)	\$ (4,000,000)
	Subtotal - H&V Level 1 Surgery Floor Build Out Including \$4M Cost Offset	\$ 28,794,515	\$ 28,794,515
	Potential Shortfall	\$ (7,833,215)	\$ (7,920,586)

***Funds Presently Not Committed by Board**

Funds designated for former HOTC project (Not Presently Committed by Board)	\$ 7,500,000	\$ 7,500,000
Interest earned designated for former HOTC project (Not Presently Committed by Board)	\$ 246,400	\$ 246,400

Board Approved Budget vs. Worst Case Forecast



5. Looking Ahead

- Complete SDG&E testing and “flip the switch” between CoGen and grid
- Continue commissioning of the CEP systems and construction of the O2 Farm and Flex Connectors
- Receive Beneficial Occupancy of Level B and the CEP.
- Begin Helix water line, steam line and South Loading Dock enhancement scopes
- Bring a recommendation to replace HOK on H&V Level 1 Surgery Floor Build Out

Questions?

