

Grossmont Healthcare District

A close-up, low-angle shot of a field of bright orange poppies. The flowers are in various stages of bloom, with some fully open and others as buds. The background is a clear, bright blue sky with a few wispy clouds. The lighting is bright and natural, highlighting the texture of the petals.

February 2018 Prop G Board Report



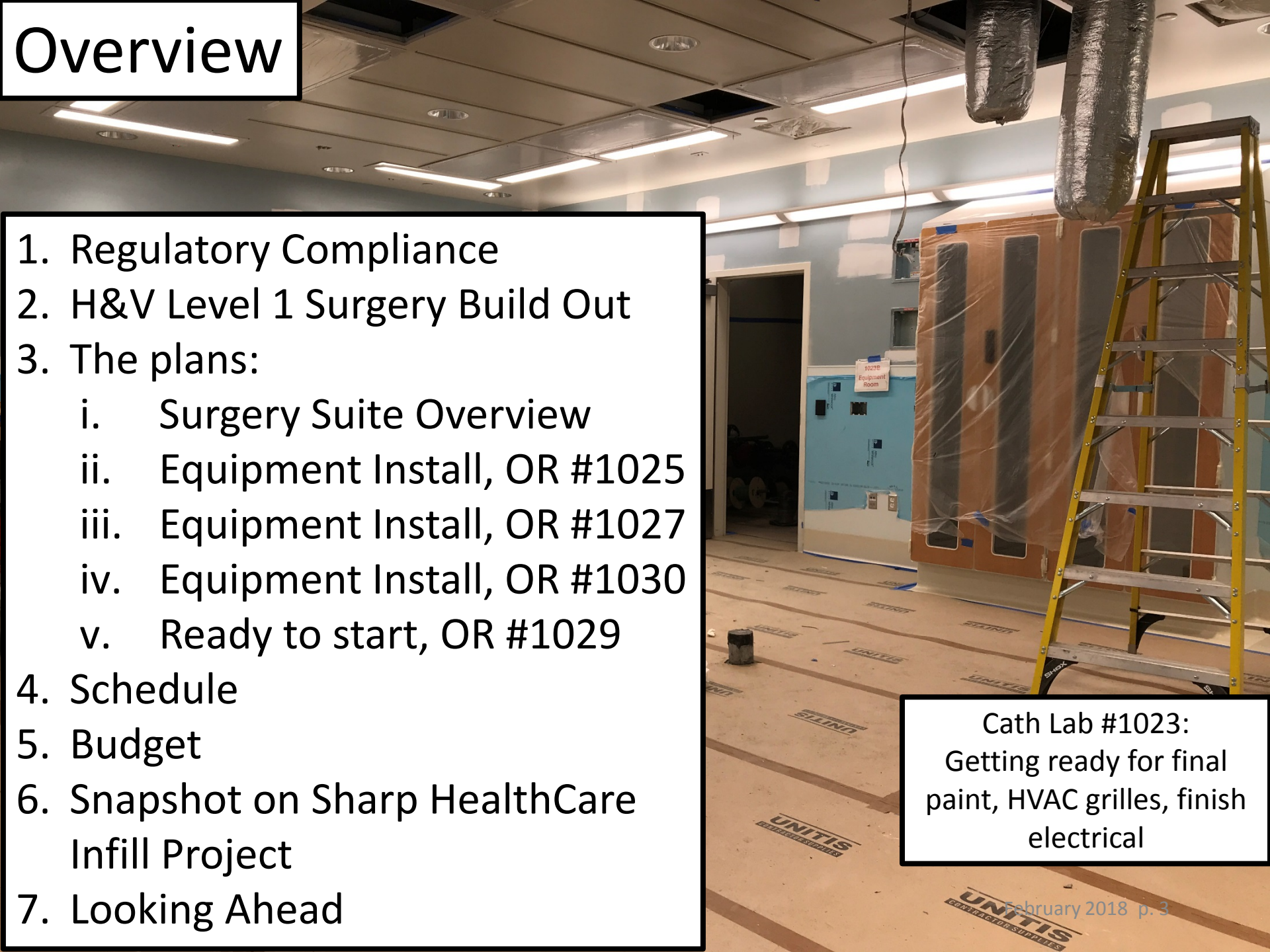
Reflection:

“Never say you know the last word about any human heart.”

Henry James

Overview

1. Regulatory Compliance
2. H&V Level 1 Surgery Build Out
3. The plans:
 - i. Surgery Suite Overview
 - ii. Equipment Install, OR #1025
 - iii. Equipment Install, OR #1027
 - iv. Equipment Install, OR #1030
 - v. Ready to start, OR #1029
4. Schedule
5. Budget
6. Snapshot on Sharp HealthCare Infill Project
7. Looking Ahead



Cath Lab #1023:
Getting ready for final
paint, HVAC grilles, finish
electrical

1. Regulatory Compliance



Project	Safety Event	Infection Control Breach	Notice of Non-Compliance
Level 1 Surgery Build Out	0	0	4

As of 2-22-18 **four** mechanical subcontract issues had been escalated to NNC's. Swinerton is working with the subcontractor to correction these minor items.

East Corridor #1001: OR Staff on tour 2-13-18

2. H&V Level 1 Surgery Build Out

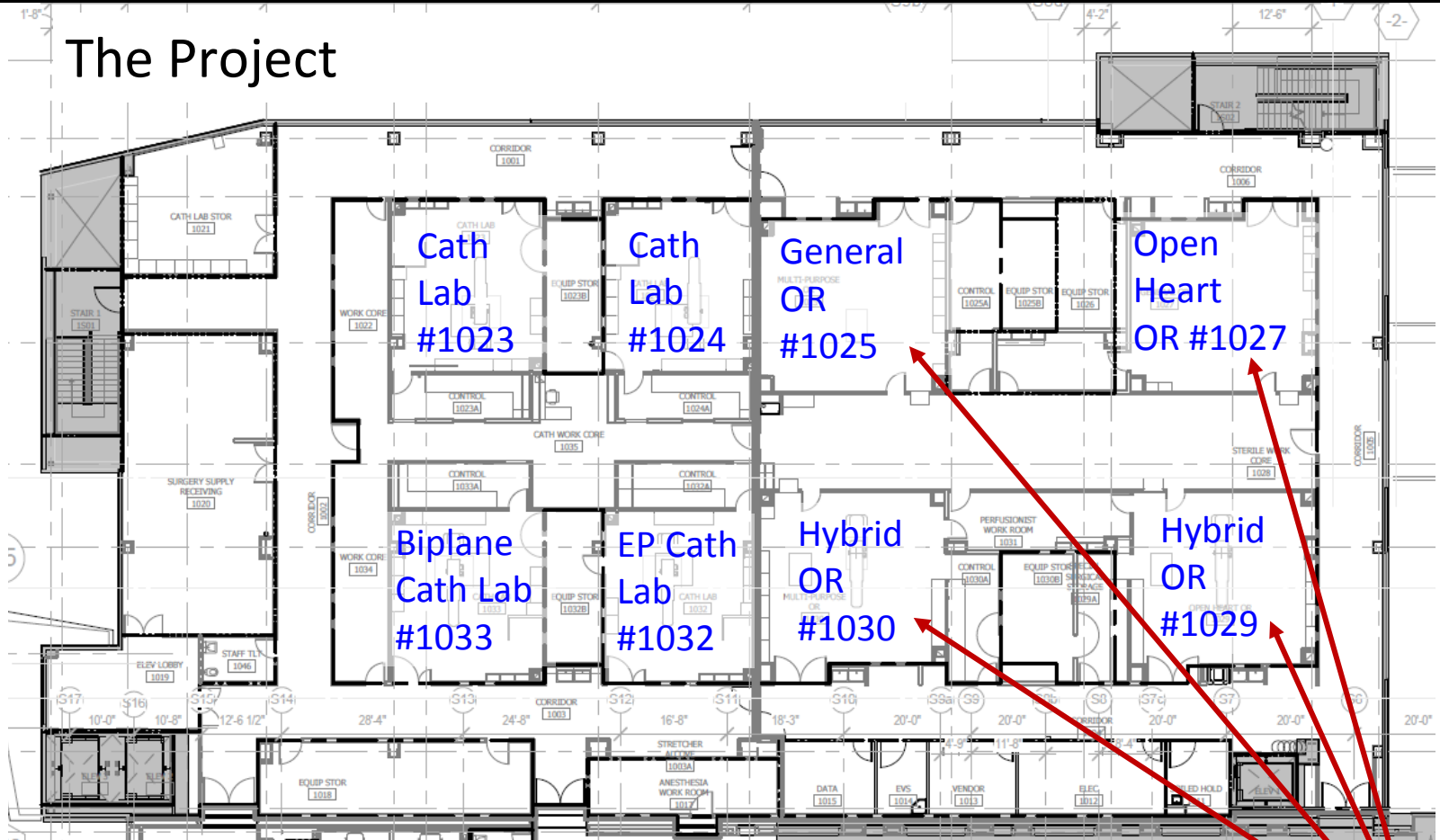
- Medical equipment installation in progress in ORs #1025, #1027, #1029, #1030
- Finish flooring complete in Cath Labs #1023, #1024, #1032, #1033, and core, North half of floor
- AE formal punch list of the South ORs underway
- Schedule impact: Due to mechanical installation issues, commissioning the system may add time to the schedule
- Schedule delays: 65 days approved to date; 9 added days of delay anticipated



South Corridor: Lights installed; bracing ready for T-Bar grid supports

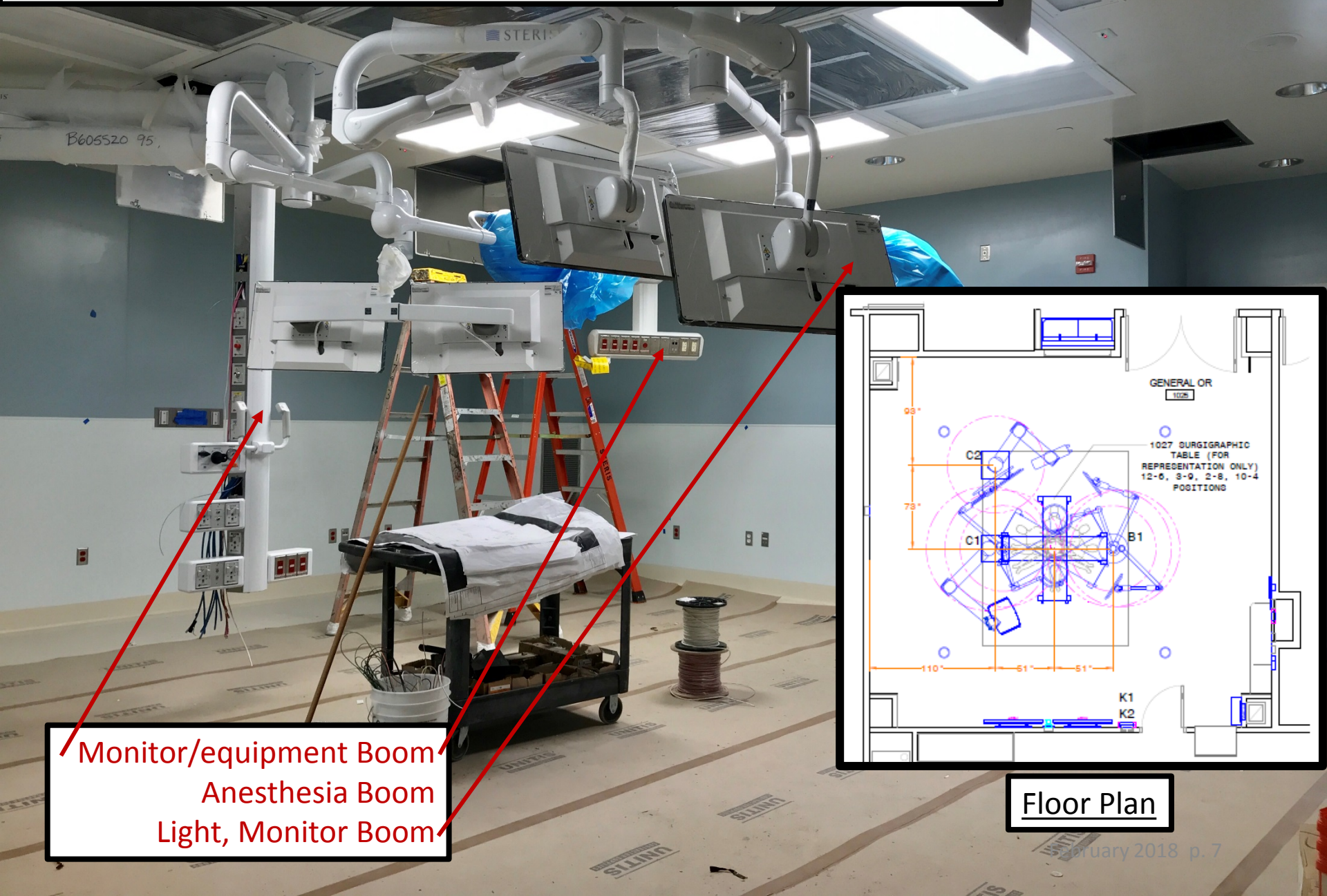
3i. Surgery Suite Overview Plan:

The Project

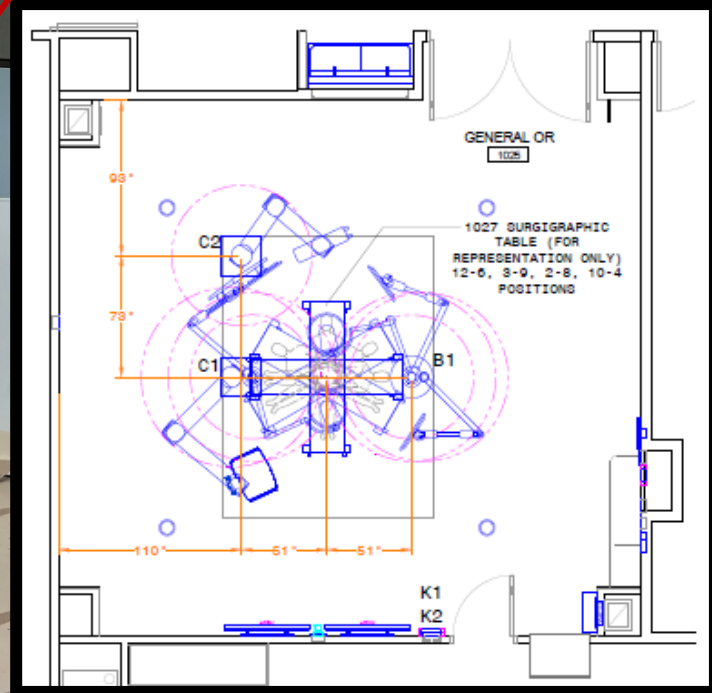


Equipment installation in progress in ORs #1025, #1027, #1029, #1030

3ii. Equipment Install, OR #1025:

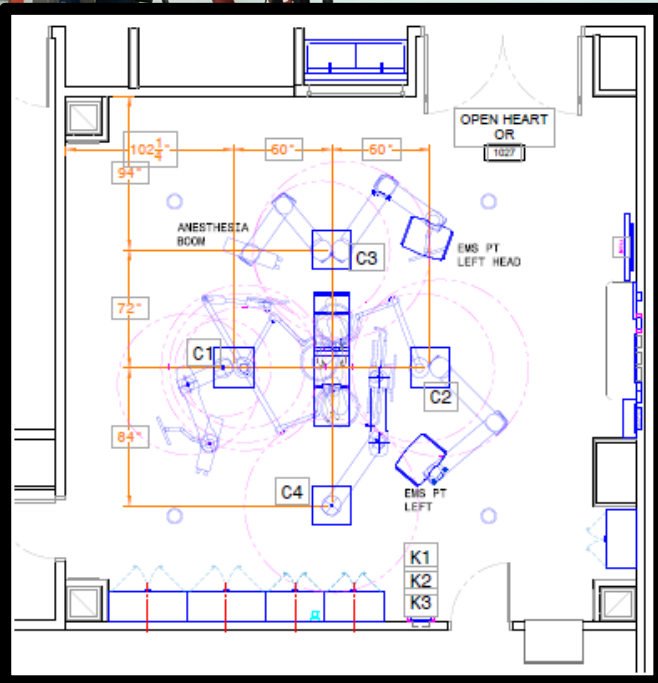
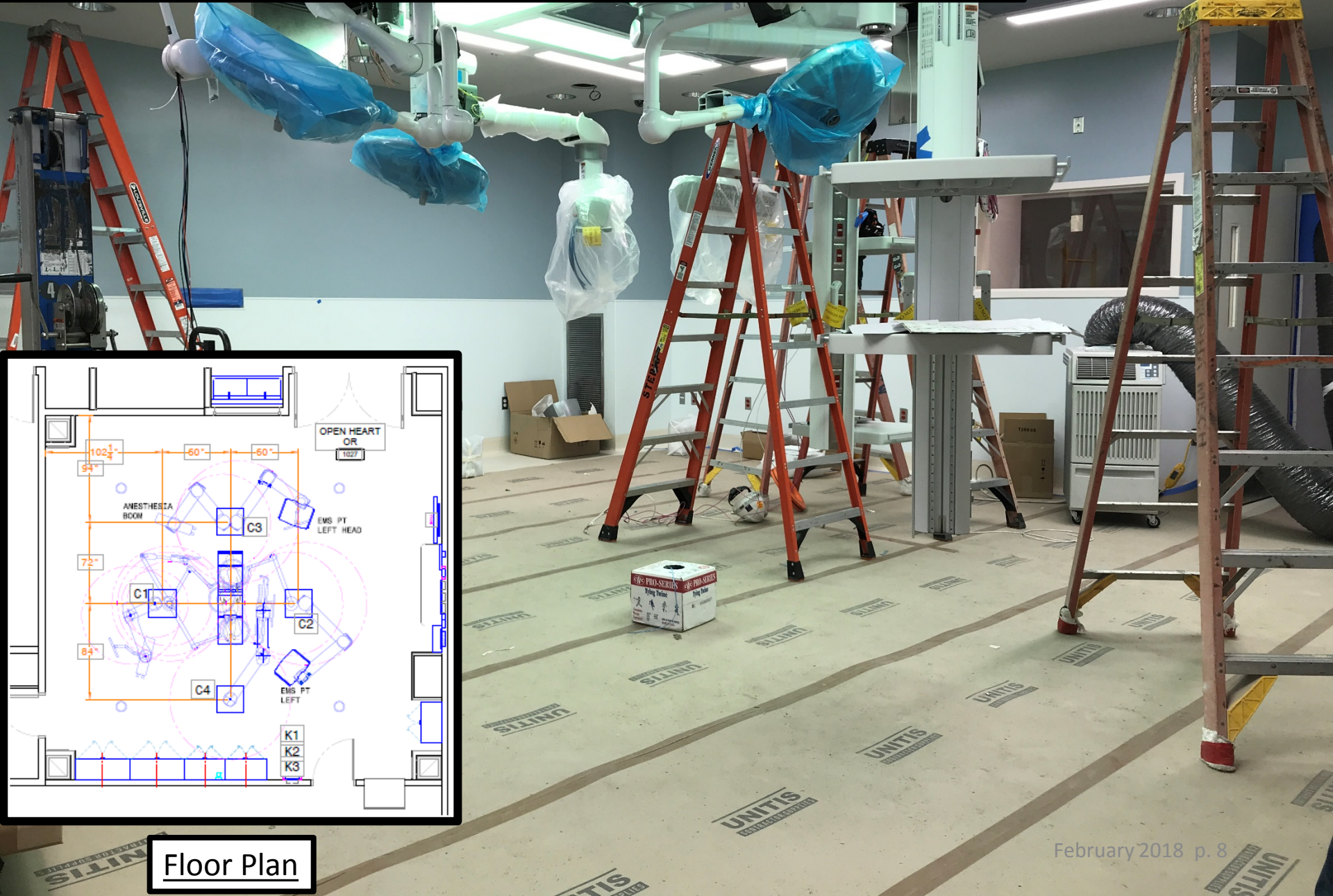


Monitor/equipment Boom
Anesthesia Boom
Light, Monitor Boom



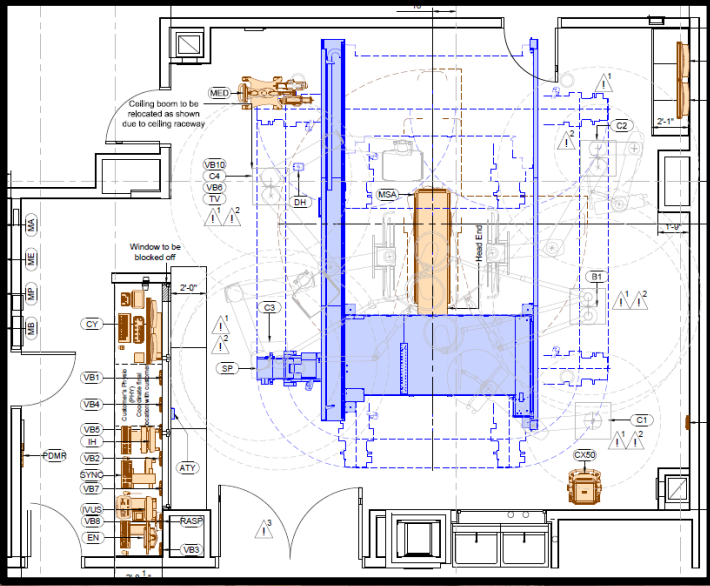
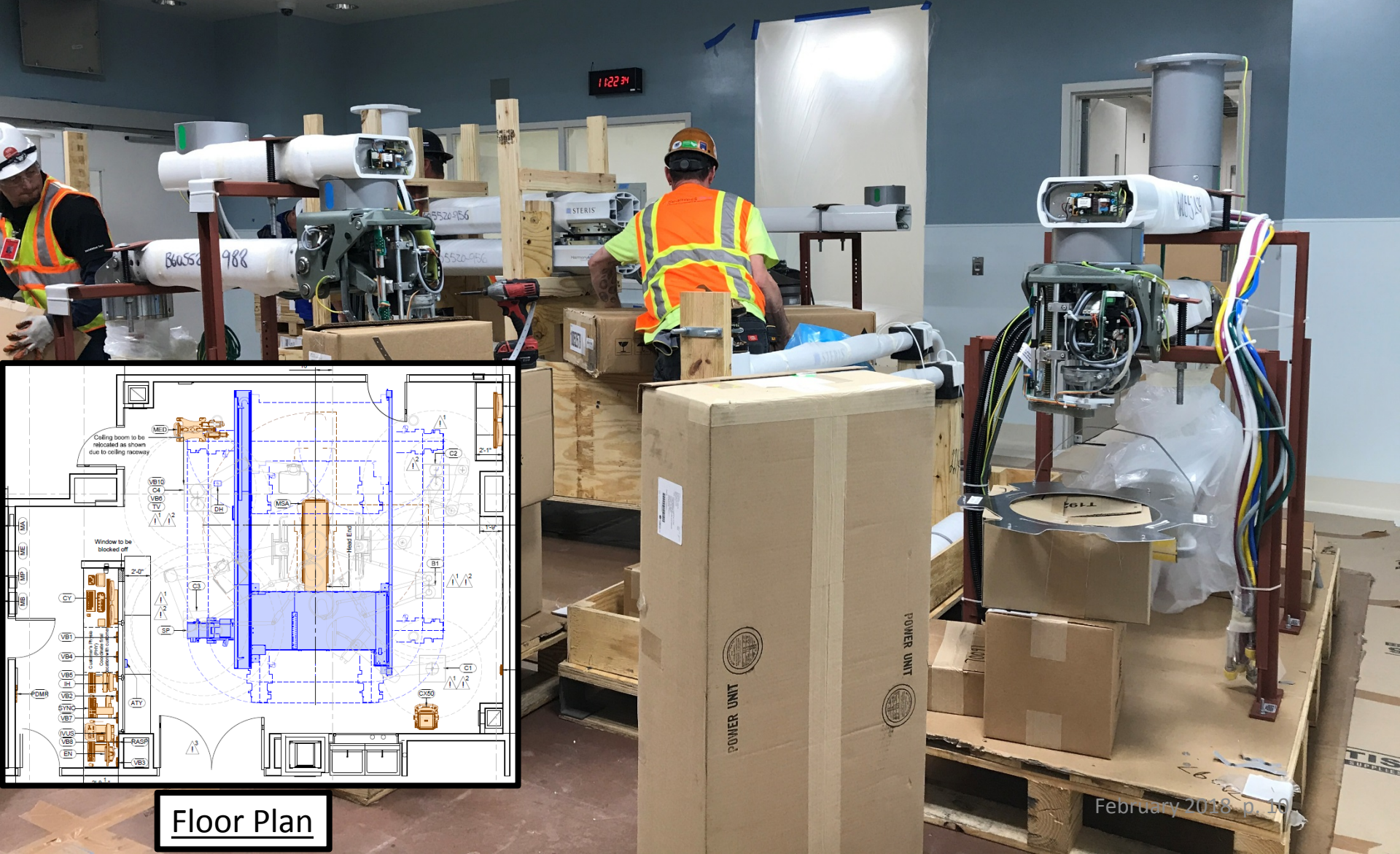
Floor Plan

3iii. Equipment Install, OR #1027:



Floor Plan

3v. Ready to start – Hybrid OR #1029:



Floor Plan

5. Budget



Category	Project Name	Current Projected Cost At Completion (02/22/18)	Projected Cost At Completion (01/24/18)	Footnotes
Current Funds Available	Total Prop G Building Fund (Bond and Settlement Proceeds, Interest Earned, Grants, Etc.)	\$ 260,772,011	\$ 260,772,011	1
Projects Completed	Central Energy Plant, ED-CCU, Heart & Vascular Bldg, East Tower Renovation, Early Utilities	\$ 225,834,531	\$ 225,996,922	2
	Remaining Prop G Building Funds before Level 1 Surgery	\$ 34,937,480	\$ 34,775,089	
Projects Under Construction	H&V Level 1 Surgery Floor Buildout	\$ 31,093,063	\$ 29,533,684	3
	Potential Surplus	\$ 3,844,417	\$ 5,241,405	
	Legal Expenses for Reimbursement		\$ (1,014,356)	
	Forecast Potential Surplus	\$ 3,844,417	\$ 4,227,049	

Footnotes:

- 1- Current Funds Available include \$3.7M of 2016 Settlement Proceeds
- 2- Projects Completed Current forecast decreased per project's final costs
- 3- Current Projected Cost includes \$1,014,356 of Legal Expenses for Reimbursement to GHD

6. Snapshot on Sharp HealthCare Infill Project

- Complete installation of T-grid ceiling in PACU 1; start w/ new PACU 2
- Painting & installation of headwalls in new PACU 1 & 2
- Ongoing overhead utilities installation in new PACU area
- Installation of overhead utilities & drywall tape/finish ongoing in new Sterile Supply space & Nurse Central Control Station



PACU 1 Headwall Installation



PACU 1 Nurse Station

7. Looking Ahead



- Install T-Bar ceilings in perimeter corridors
- Start up HVAC system
- Obtain pricing from Swinerton for approved Helix Waterline drawings
- Connect steam and medical gas lines to Infill Project: all ready/scheduled for connection on/about 3-7-18
- Continue installation of medical equipment in ORs #1029 & #1030
- Start installation of medical equipment in Cath Labs #1023, #1032 & #1033
- ICBOC & GO Bond reviewed request for additional Prop G equipment funds

Questions?

