

A photograph of two wild turkeys standing in a field of autumn leaves. The turkeys have dark, iridescent feathers and blue heads. The background is a dense thicket of trees with vibrant orange, yellow, and red foliage. The ground is covered with fallen leaves and some green grass.

October Progress Report

**Grossmont Healthcare District
Board Report – November 7, 2016**

Reflection

A thankful heart is not only the greatest virtue, but the parent of all other virtues.

- Cicero



Overview

1. Regulatory Compliance
2. Wrapping Up
3. Surgery Build Out Bid Status
4. Schedule
5. Budget
6. Snapshot on Infill
7. Looking Ahead



1. Regulatory Compliance

October 2016

Project	Safety Event	Infection Control Breach	Notice of Non Compliance
CEP	0	0	4
H&V	0	0	0
Surgery Build Out	na	na	na



2. Wrapping Up – Central Energy Plant

- Complete all construction by the end of the year
- L5 Testing was successful on 10/23
 - Identified one needed minor adjustment
- Final tasks include:
 - Seismic bracing for chilled water piping in the existing CEP
 - Demolition of old piping in the existing CEP and tunnel
 - Medical Gas & cold water point of connections
 - Condensate pump return supports need OSHPD approval



2. Wrapping Up – Heart & Vascular

- Complete all construction by December 1, 2016
- Final tasks include:
 - Completion of Helix Water Line connections



Helix Water Line Work



North Hardscape & Road Work

3. Surgery Build Out

- On 10/17 the Board rejected all bids.
- The revised re-bid package went out to the 4 pre-qualified bidders on 10/28.
- The new bid package consisted of:
 - Clarifications on the bid form, the schedule and sub-contractor qualifications;
 - Incorporation of all RFI questions and answers into the new bid package; and
 - Permitted drawings issued with no changes.
- Bids are due 11/17.
- Award of contract on 12/5.



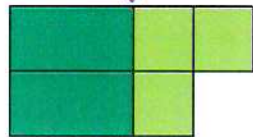
4. Schedule

We are here



Updated 10-26-16

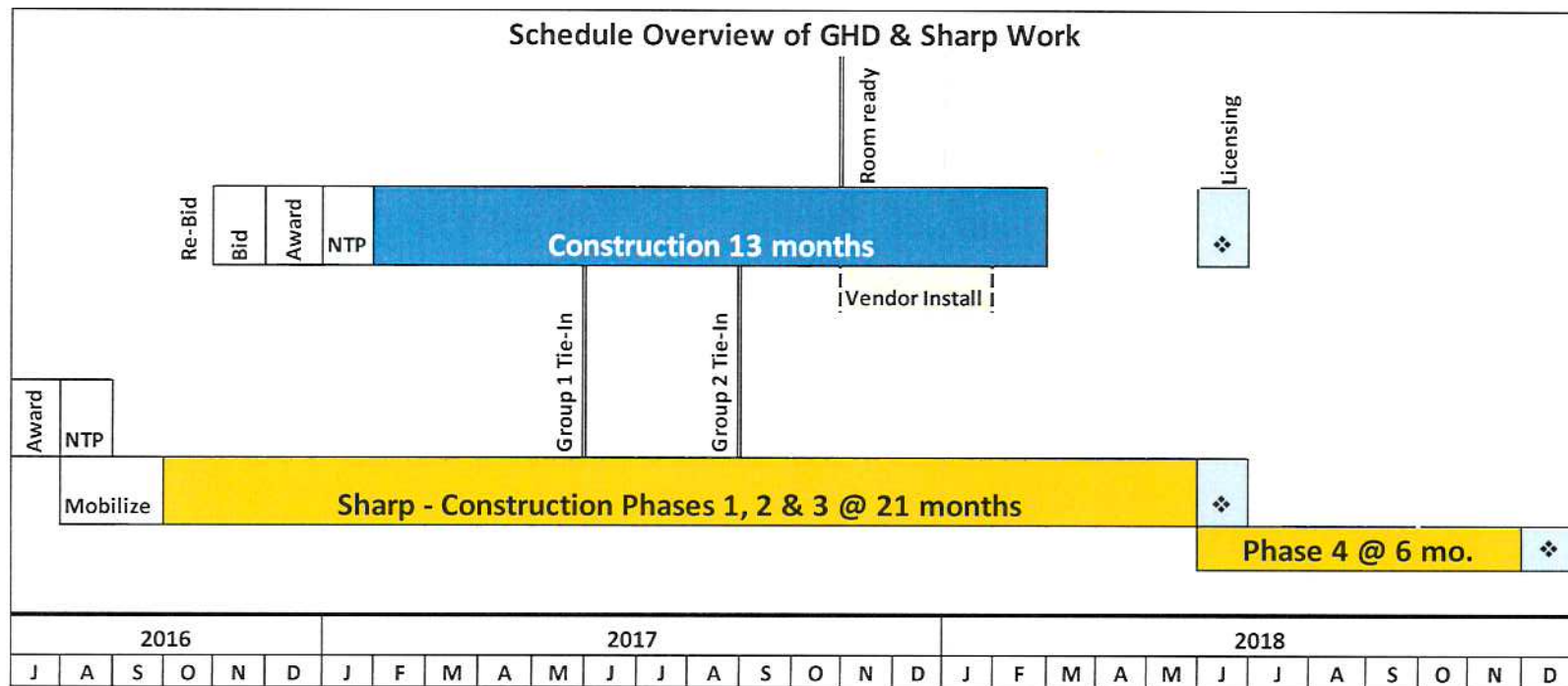
H&V
CEP



Surgery



Combined Project Schedules



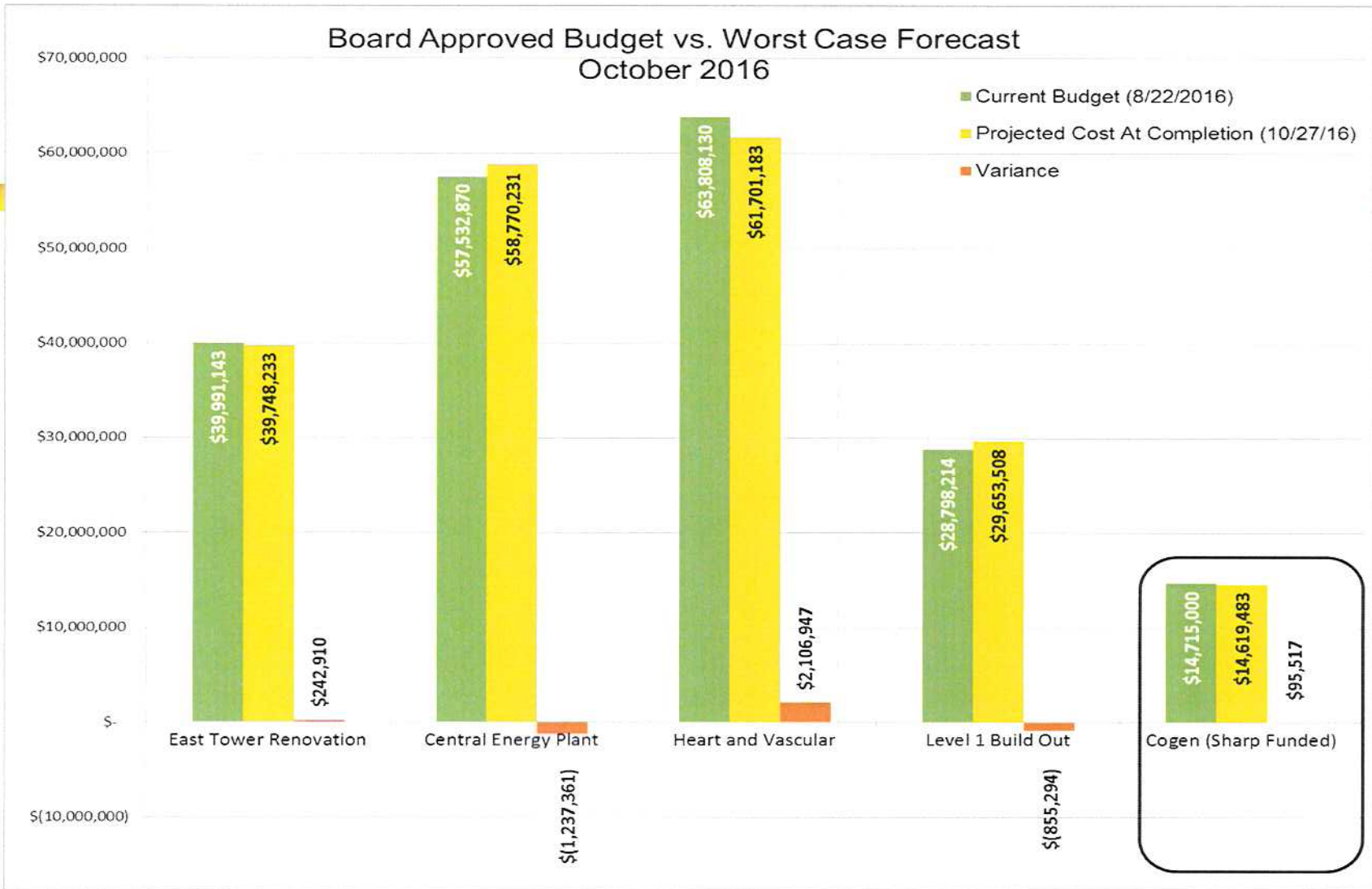
5. Budget

Category Funds Available	Project Name	Projected Cost At Completion (10/27/16)	Projected Cost At Completion (9/21/16)
	Total Prop G Building Fund (Bond Proceeds, Interest Earned, Grants, Etc.)	\$ 256,809,326	\$ 256,809,326
Worst Case Forecast for Projects Completed or Under Construction	E Tower Phase 1	\$ 249,566	\$ 249,566
	Early Utilities and North Dock	\$ 13,313,098	\$ 13,313,098
	ED-CCU	\$ 40,514,579	\$ 40,514,579
	CEQA	\$ 104,211	\$ 104,211
	Central Energy Plant *	\$ 58,770,231	\$ 58,332,650
	Heart and Vascular	\$ 61,701,183	\$ 61,681,711
	East Tower Renovation	\$ 39,748,233	\$ 39,748,493
	South Dock / Level B Seismic Upgrades	\$ 11,998,902	\$ 11,998,902
	Bond Issuance Costs (Current Projection)	\$ 498,613	\$ 498,613
		Total Worst Case Scenario for Projects Completed or Under Construction	\$ 226,898,616
	Remaining Prop G Building Funds before H&V Level 1 Surgery Floor Build Out Project	\$ 29,910,710	\$ 30,367,503
Projects Not Under Construction	H&V Level 1 Surgery Floor Build Out (Current Estimate, Contract and Board Award Pending)	\$ 29,653,508	\$ 29,615,468
	Potential Surplus	\$ 257,202	\$ 752,035

*** CEP Variance from prior month (new costs)**

Added steel supports and demo E-CUP	\$250K
Rework Chilled Water piping at E-CUP	\$37K
Additional PM budget	\$90K
Additional testing	\$35K
	\$412K

Board Approved Budget vs. Worst Case Forecast October 2016

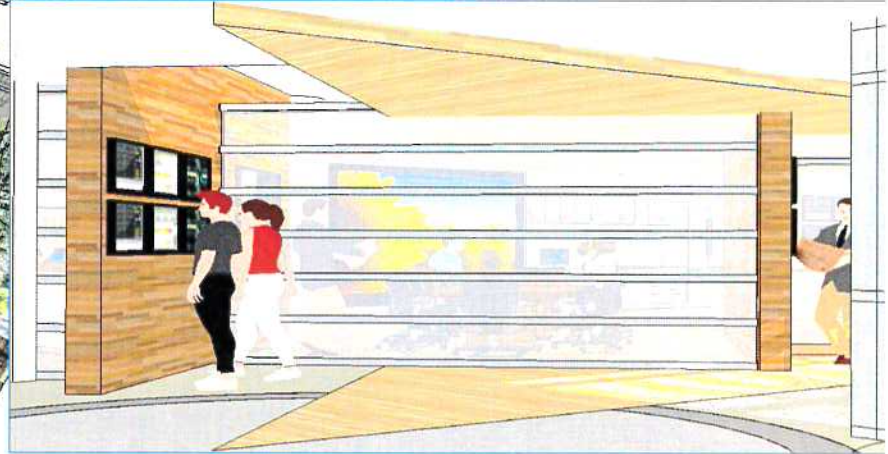


6. Snapshot on Infill

- Scaffolding goes up to announce the start of construction
- Revised Pathology Histology Lab area
 - Reduced from 3,000 SF to 1,000 SF
 - Concept design for a Command Center in part of the saved space



New Hospital Experience Center



New room for:

- Daily Huddles
- Tracking key performance metrics
- Emergency Command center

7. Looking Ahead

- Complete wrap up work on CEP and H&V
- Continue discussions with McCarthy on a final settlement of delay related claims
- Receive Surgery Build Out bids & determine low bidder
 - Prepare for the Board's award of the contract on 12/5



Questions?

