

A vibrant field of purple lupine flowers in full bloom, set against a bright blue sky with scattered white clouds. The flowers are tall and clustered, with green foliage at the base. The overall scene is bright and cheerful, suggesting a spring or summer setting.

Proposition G Projects Monthly Report - May 2014

Grossmont Healthcare District Board

Overview

1. Major Monthly Events
2. Schedules
 - H&V Final Phase
3. Project Status
 - Lessons Learned on CEP
4. Budgets
5. Looking Ahead

***Reflection:
Teamwork is the fuel
that lets common people
accomplish UNCOMMON
results.
- Andrew Carnegie***




***Teamwork Award
to the
East Tower Team!***

1. Major Monthly Events

1. The East Tower completion of the 2nd floor delayed.
 - All work completed on schedule by CW Driver; BUT, exhaust readings on the floor are too low.
 - The problem is caused by an existing condition, an exhaust stack. Corrective work in progress. New move date TBD.

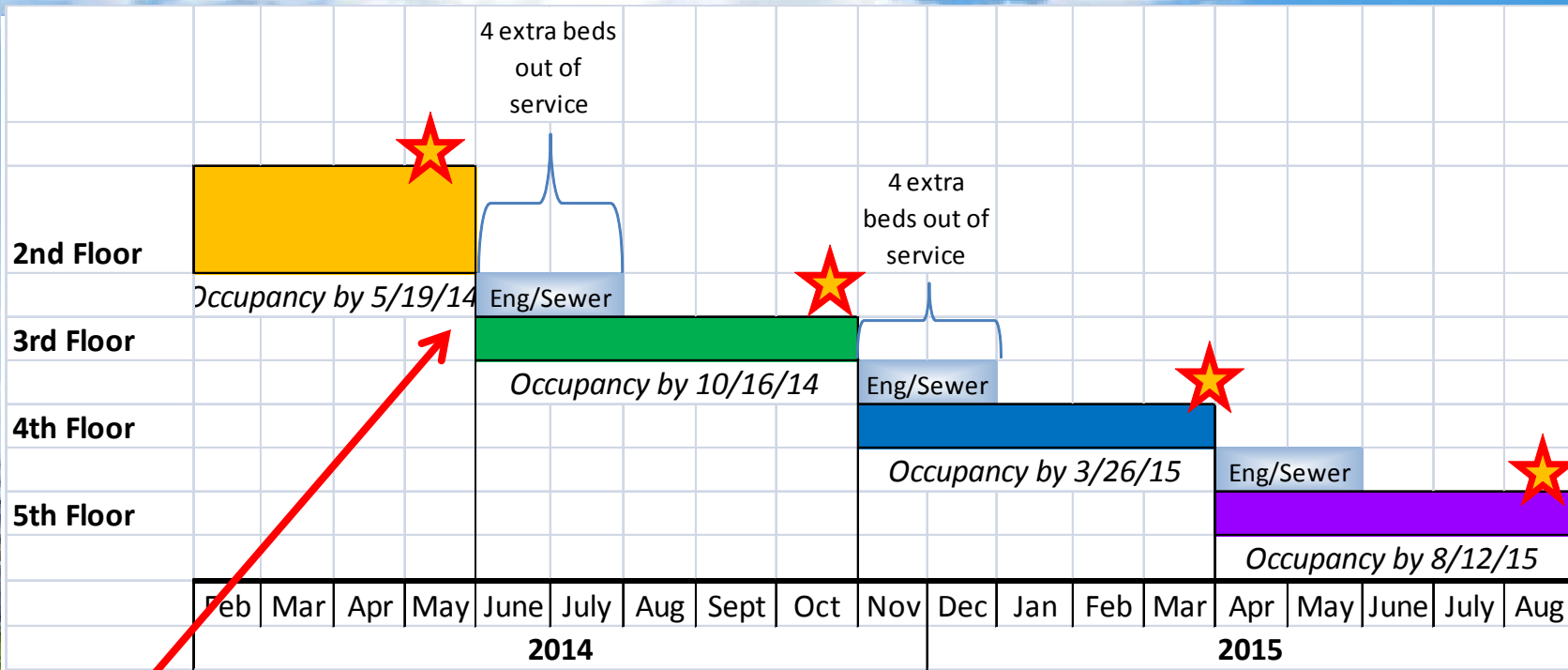
2. SDGE denied our Co-Generation Plant Interconnect Application.
 - Revised application to be submitted.
 - Schedule and cost impacts remain to be determined.

- 
3. A new proposal for Heart & Vascular will eliminate all delay days on the schedule.
 4. Work continues to finalize pricing for alternate utility connection to CEP.
 5. Sewer connection needed for South Dock.
 6. DCS Team held our first Lessons Learned session on the CEP.

2. Schedules ... Overview

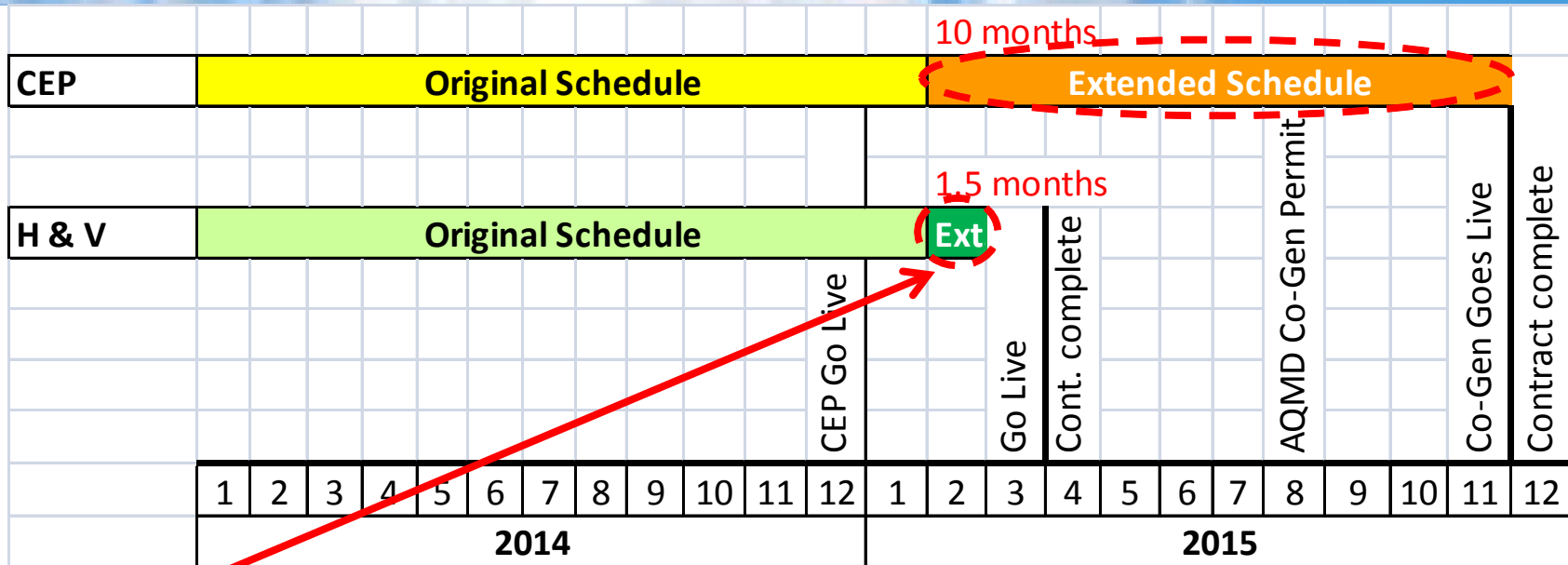
Projects	2014			2015				2016				2017			
	Q2	Q3	Q4	Q1	Q2	Q3	Q4	Q1	Q2	Q3	Q4	Q1	Q2	Q3	Q4
CEP & Co-Generation	Construction														
E. Tower - All Floors	Construction														
Heart & Vascular w/ Level A	Construction														
H&V - Surgery Build Out															
Prop G Scope						Construction					CDPD				
Sharp Scope						Construction									

East Tower Recovery Schedule



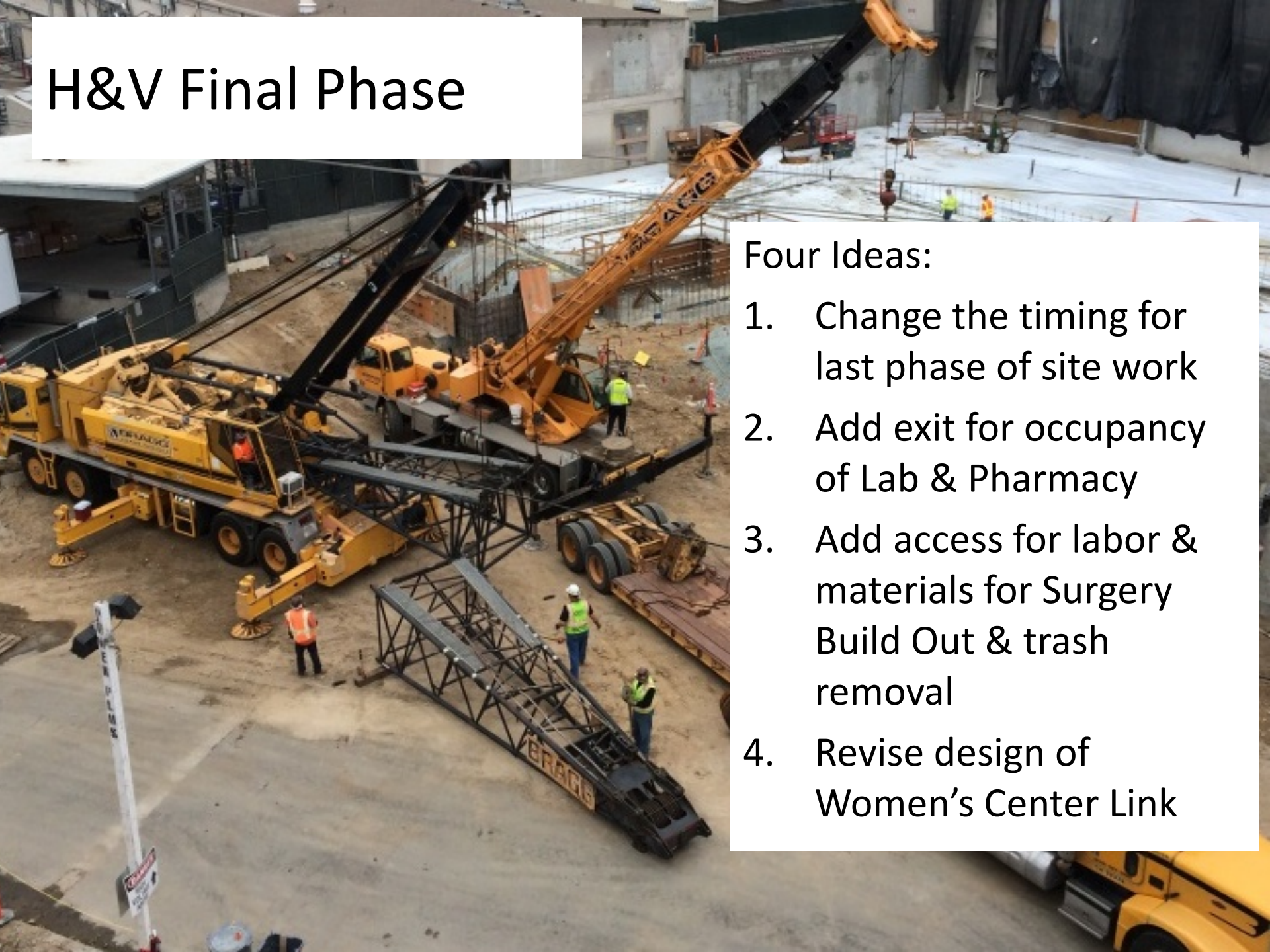
- Slipping here by 2 to 3 weeks.

CEP and H&V Recovery Schedules



- New issues to discuss that should eliminate the H&V delay

H&V Final Phase

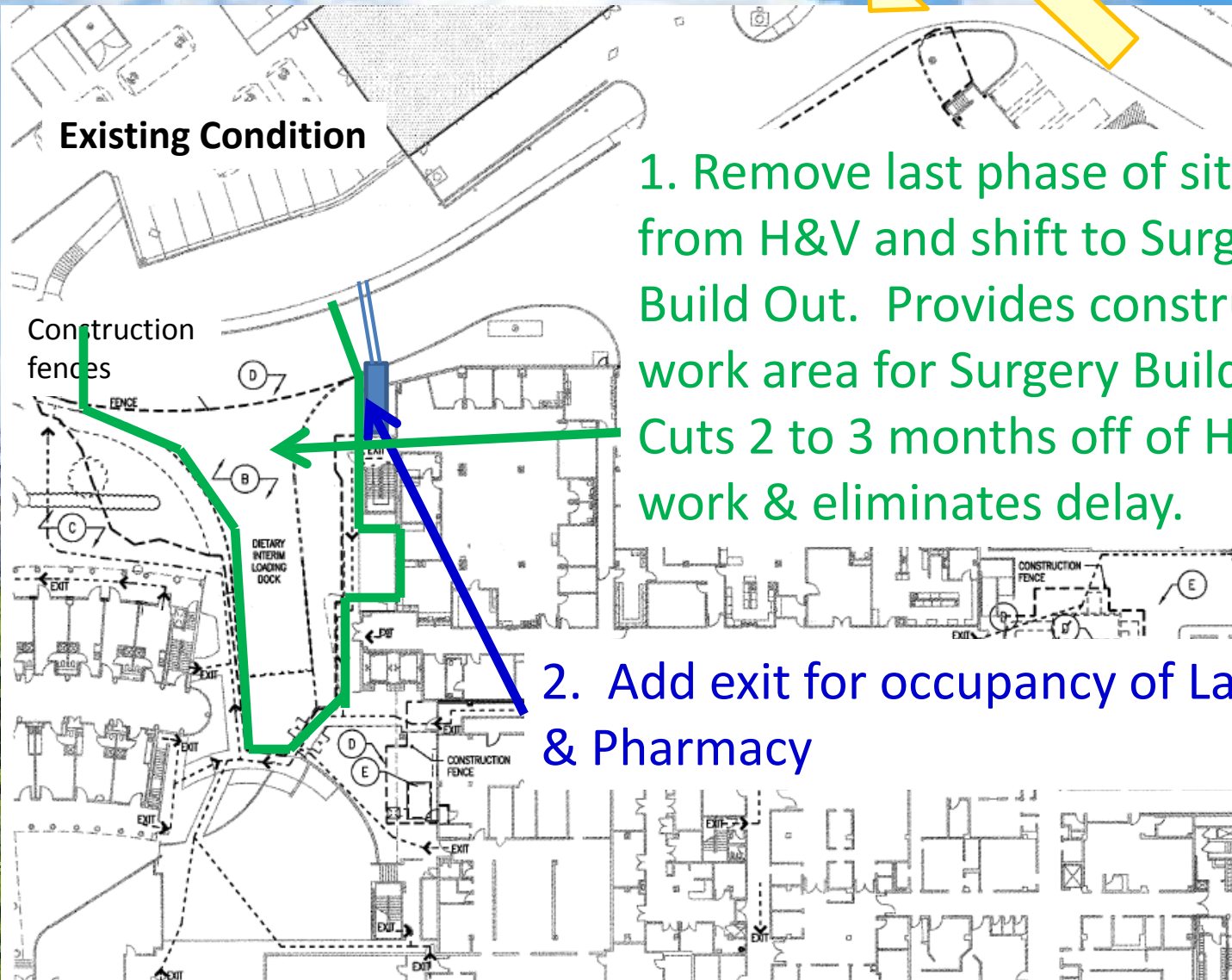
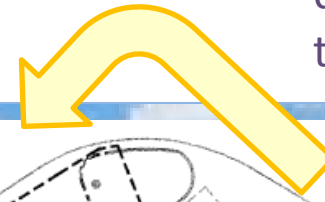


Four Ideas:

1. Change the timing for last phase of site work
2. Add exit for occupancy of Lab & Pharmacy
3. Add access for labor & materials for Surgery Build Out & trash removal
4. Revise design of Women's Center Link

4 Ideas:

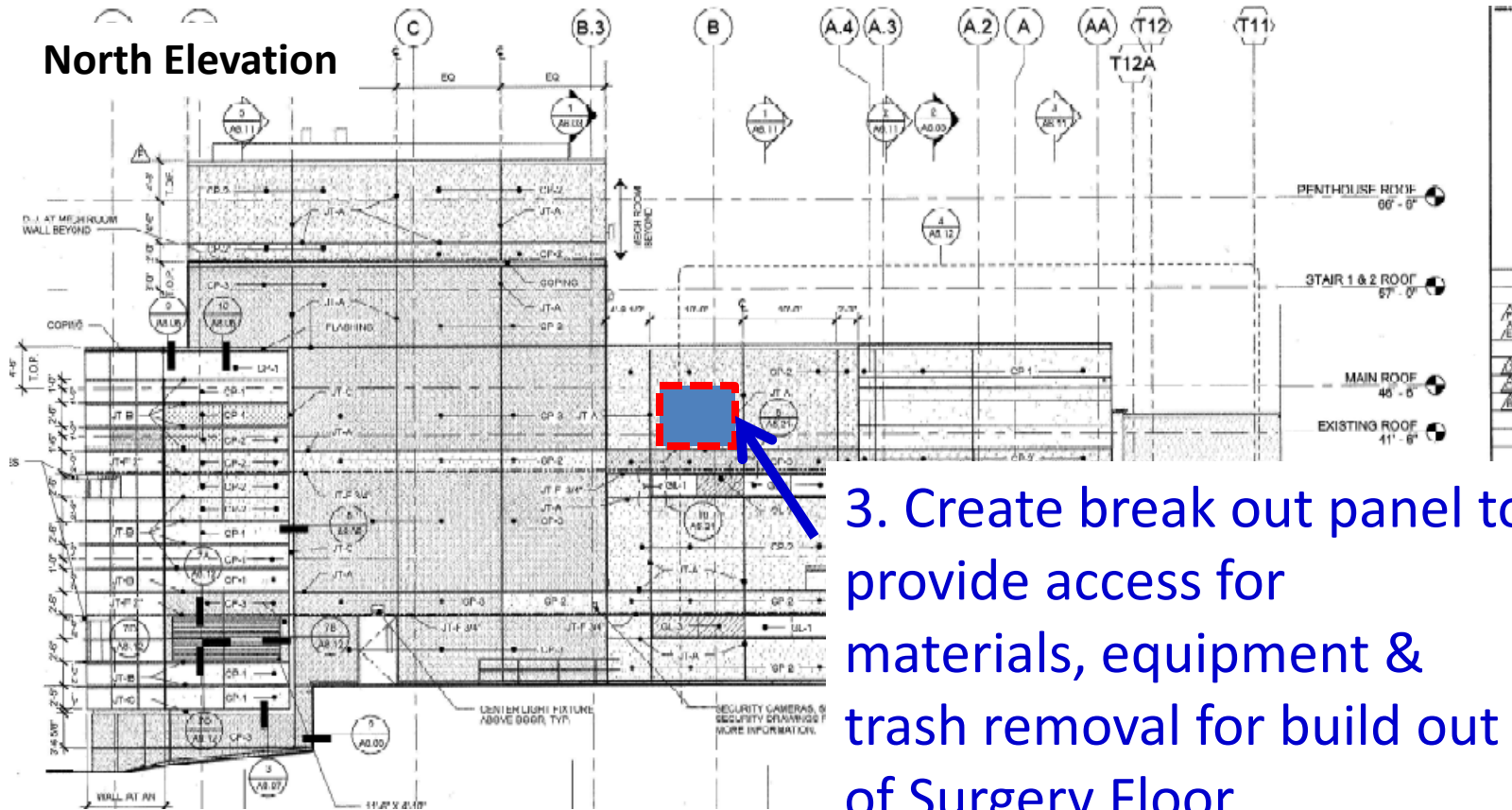
Access to loading docks & CEP from the South



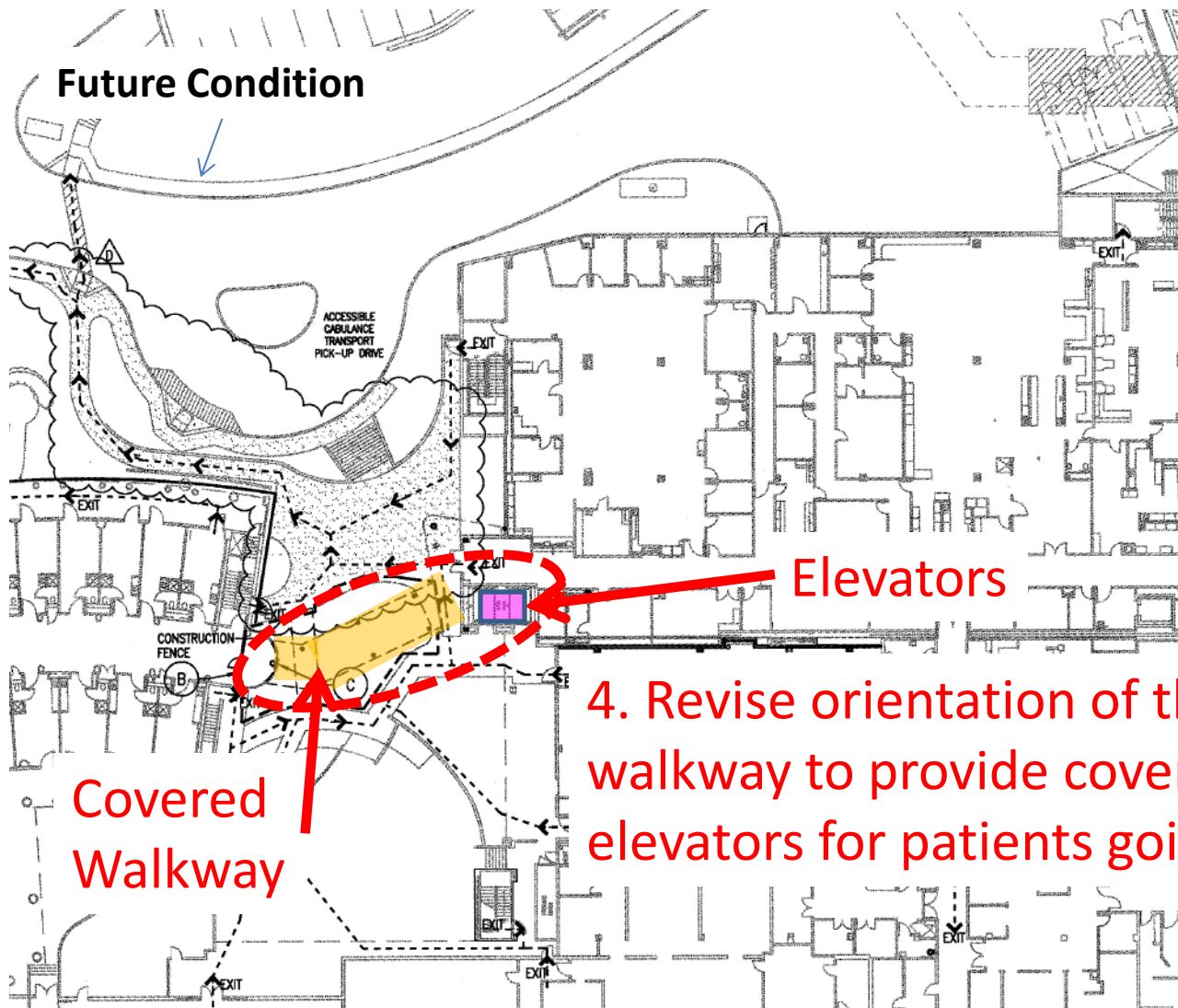
1. Remove last phase of site work from H&V and shift to Surgery Build Out. Provides construction work area for Surgery Build Out. Cuts 2 to 3 months off of H&V work & eliminates delay.

2. Add exit for occupancy of Lab & Pharmacy

North Elevation



3. Create break out panel to provide access for materials, equipment & trash removal for build out of Surgery Floor



4. Revise orientation of the covered walkway to provide cover to the elevators for patients going to Surgery

3. Project Status: East Tower



GHD Board Tour



Barry Jantz, CEO
Director Gloria Chadwick
Scott Avelson, Stantec
Dave Suydam, Director DCS
Mike McConkey. CW Driver
James Reynolds, IOR
Director Bob Ayres
Director Mike Emerson

3. Project Status: CEP



Completing Curtain Wall & Louvers



Heat Recovery
Steam Generator

2014/05/01 10:43



Cooling Tower
Installation

05/07/2014 10:37

3. Project Status: H&V



Preparation for slab on grade pour



Underground electrical

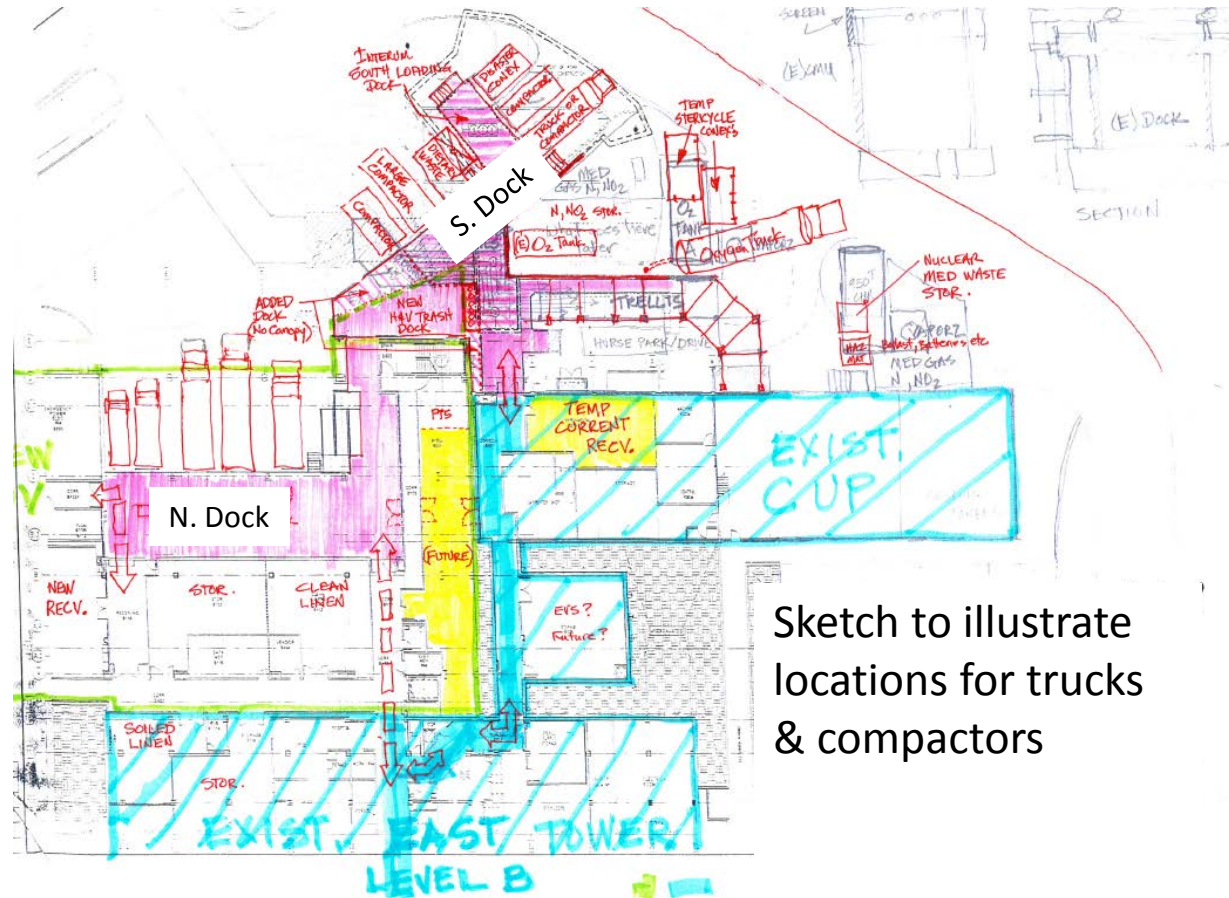


Slab on grade pour

3. Project Status

South Dock

- Work in progress to add sewer connection to South Dock
- Hospital Committee formed to review future dock usage with both North and South Docks



Sketch to illustrate locations for trucks & compactors

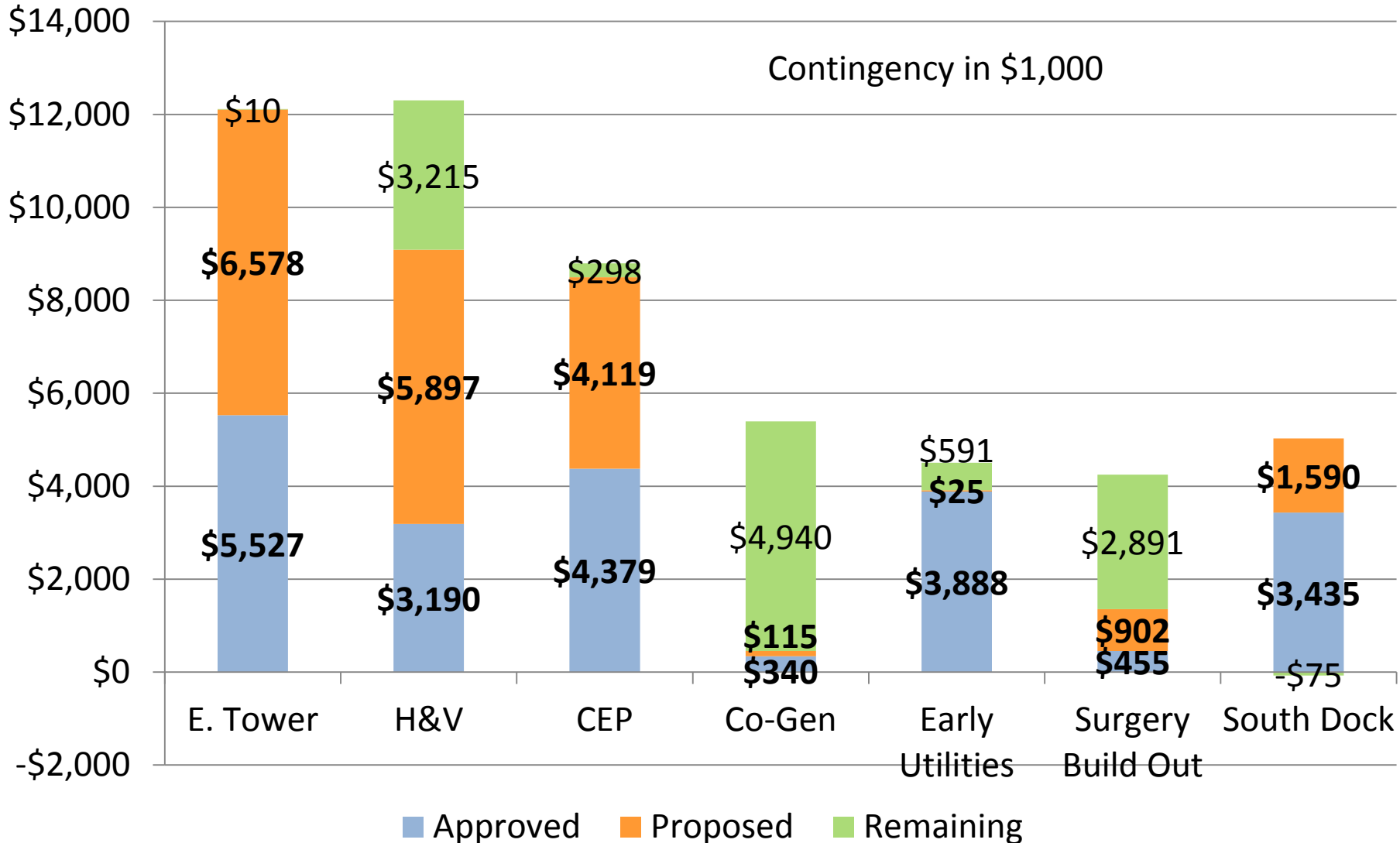
Lessons Learned on CEP

- Specifications: Heat Recovery Steam Generator
- Human Assumptions: Structural Steel Weld Lengths
- 3D BIM: Structural Steel Conflicts With Walls

Alternate unit ≠ fit other dimensions



4. Budgets: Status of Contingency Funds



5. Looking Ahead

- Steel erection starts on H&V!
- Complete 2nd Floor East Tower; move in patients & start 3rd Floor remodel
- Schedules:
 - For East Tower, CEP and H&V: prepare Contract Change Orders for new schedules, with revised milestone
- Budgets:
 - Resolve Construction Administration Services for H&V
 - Continue to concentrate on processing PCO > 90 days old, with a goal to be current by the end of June
 - Complete analysis on Delay Claims
 - Update “Worst Case Forecast” by July 1

Questions?

