

A photograph of a modern hybrid operating room (OR). The room is brightly lit with recessed ceiling lights. In the center, a Philips C-arm is mounted on a mobile cart. To the right, a Maquet table is covered with plastic. Various other pieces of medical equipment, including monitors and overhead lights, are visible. The walls are light blue and white, and a door is in the background.

# Grossmont Healthcare District

June 2018 Prop G Board Report



Reflection:

“It’s not what you look at that matters, it’s what you see.”

Henry David Thoreau

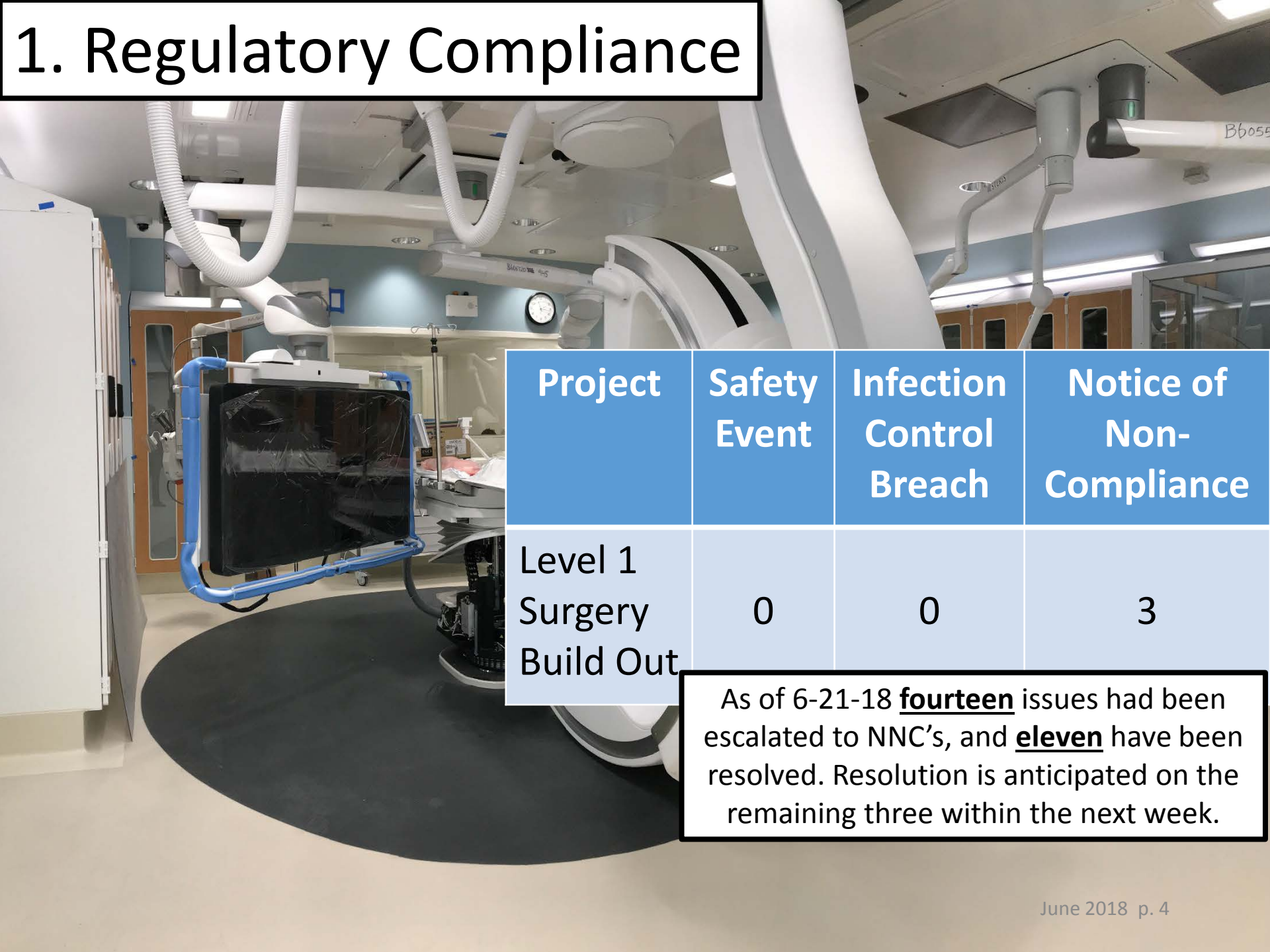
# Overview



1. Regulatory Compliance
2. H&V Level 1 Surgery Build Out
3. The Plan, Cath Labs, ORs
4. Schedule
5. Budget
6. Snapshot on Sharp HealthCare Infill Project
7. Looking Ahead

Cath Lab #1023

# 1. Regulatory Compliance



Project	Safety Event	Infection Control Breach	Notice of Non-Compliance
Level 1 Surgery Build Out	0	0	3

As of 6-21-18 **fourteen** issues had been escalated to NNC's, and **eleven** have been resolved. Resolution is anticipated on the remaining three within the next week.

## 2. H&V Level 1 Surgery Build Out

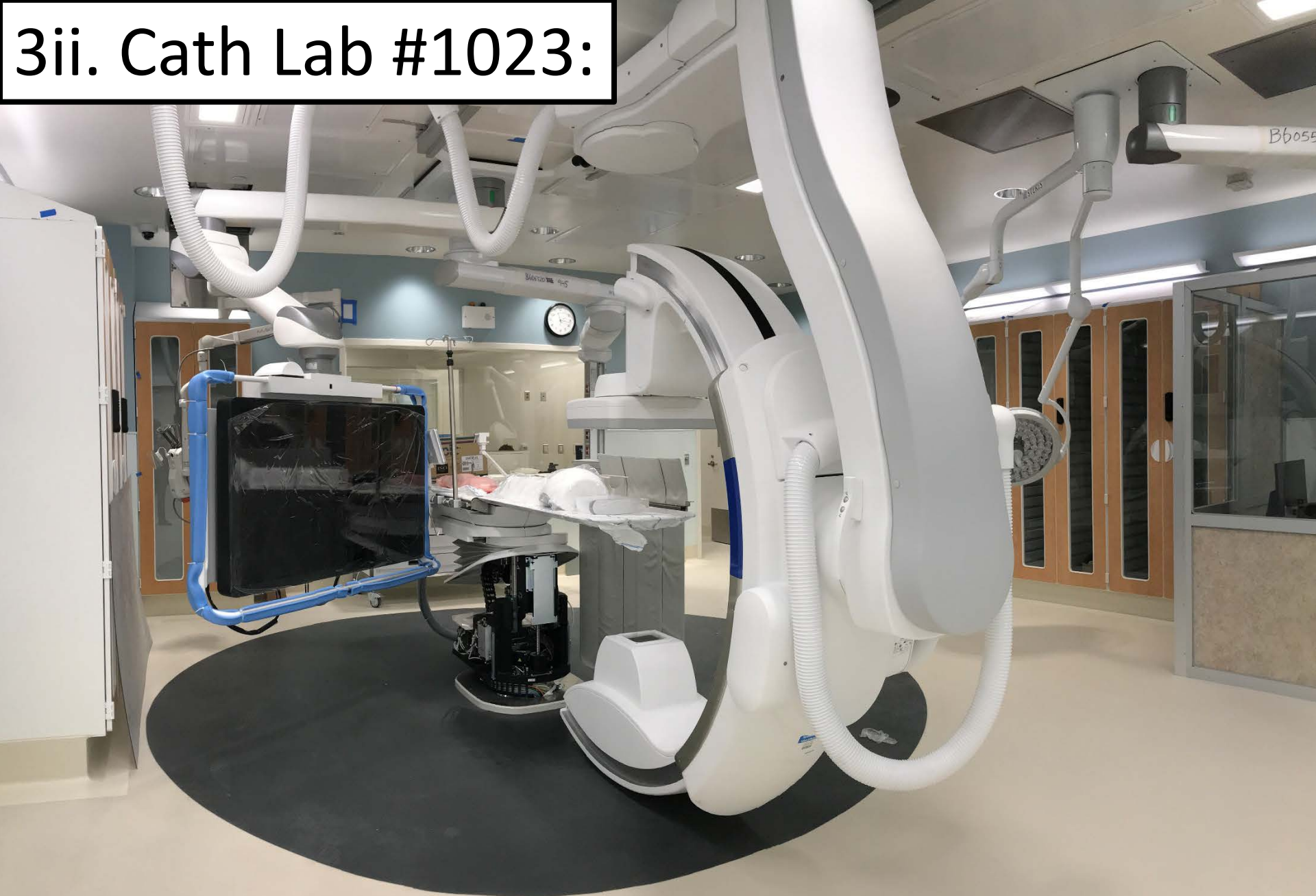
- Medical equipment installation is complete throughout
- AE formal punch list is complete throughout; items are being addressed
- Schedule delays: 65 days approved to date. 13 day delay incurred due to Philips medical equipment installation, plus 7 delay days due to completion issues (possibly non-compensable)
- Test & Balance of HVAC system is complete
- Commissioning of the medical equipment system is complete
- Commissioning of the electrical, HVAC systems started June 13<sup>th</sup>
- 4<sup>th</sup> Floor East Tower Handrails complete
- Helix Waterline Replacement work started 6-18-18 and should be complete in August 2018.



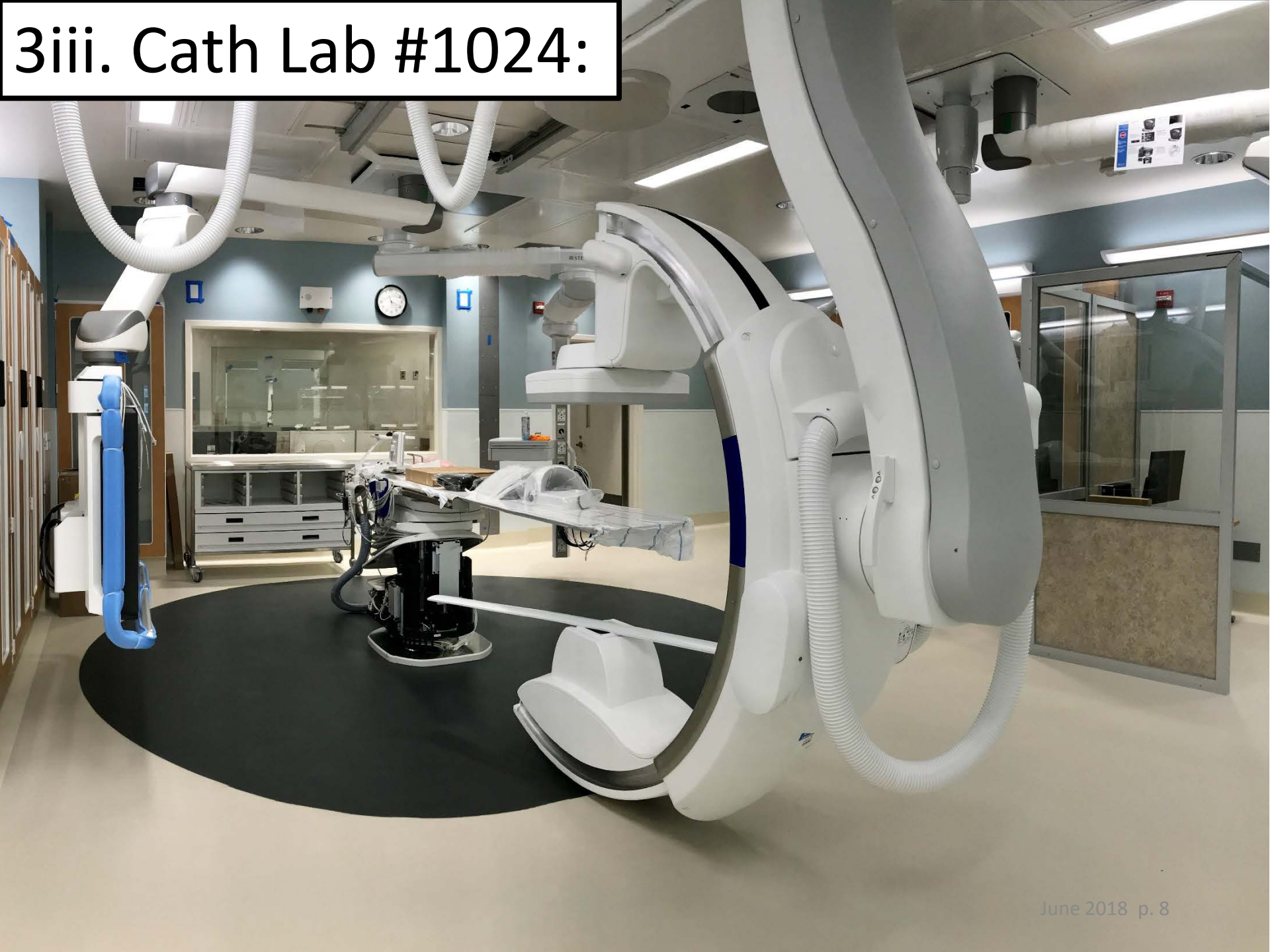
North Corridor: Complete



## 3ii. Cath Lab #1023:



# 3iii. Cath Lab #1024:



# 3iv. EP Cath Lab #1032:



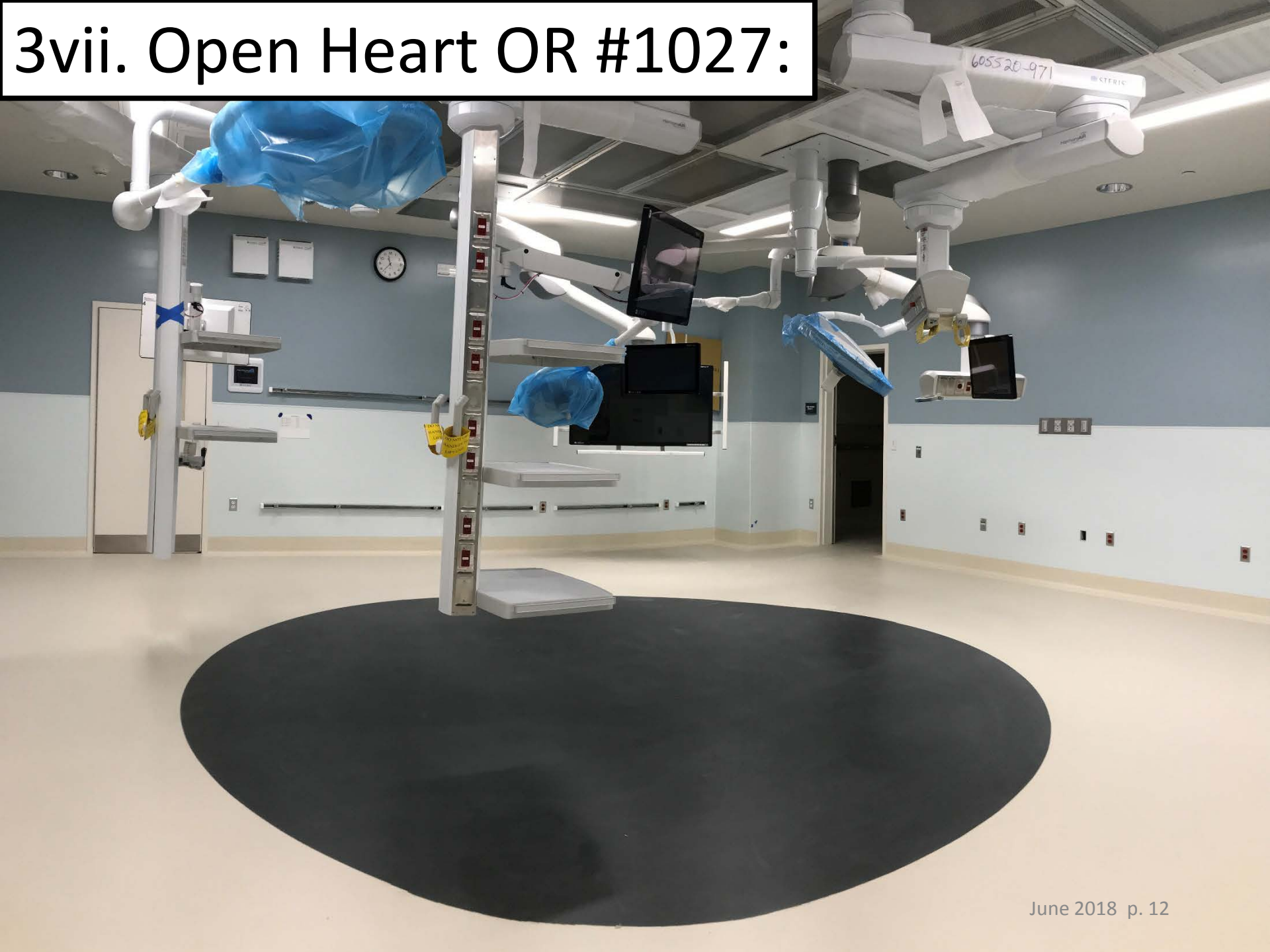
# 3v. Bi-Plane Cath Lab #1033:



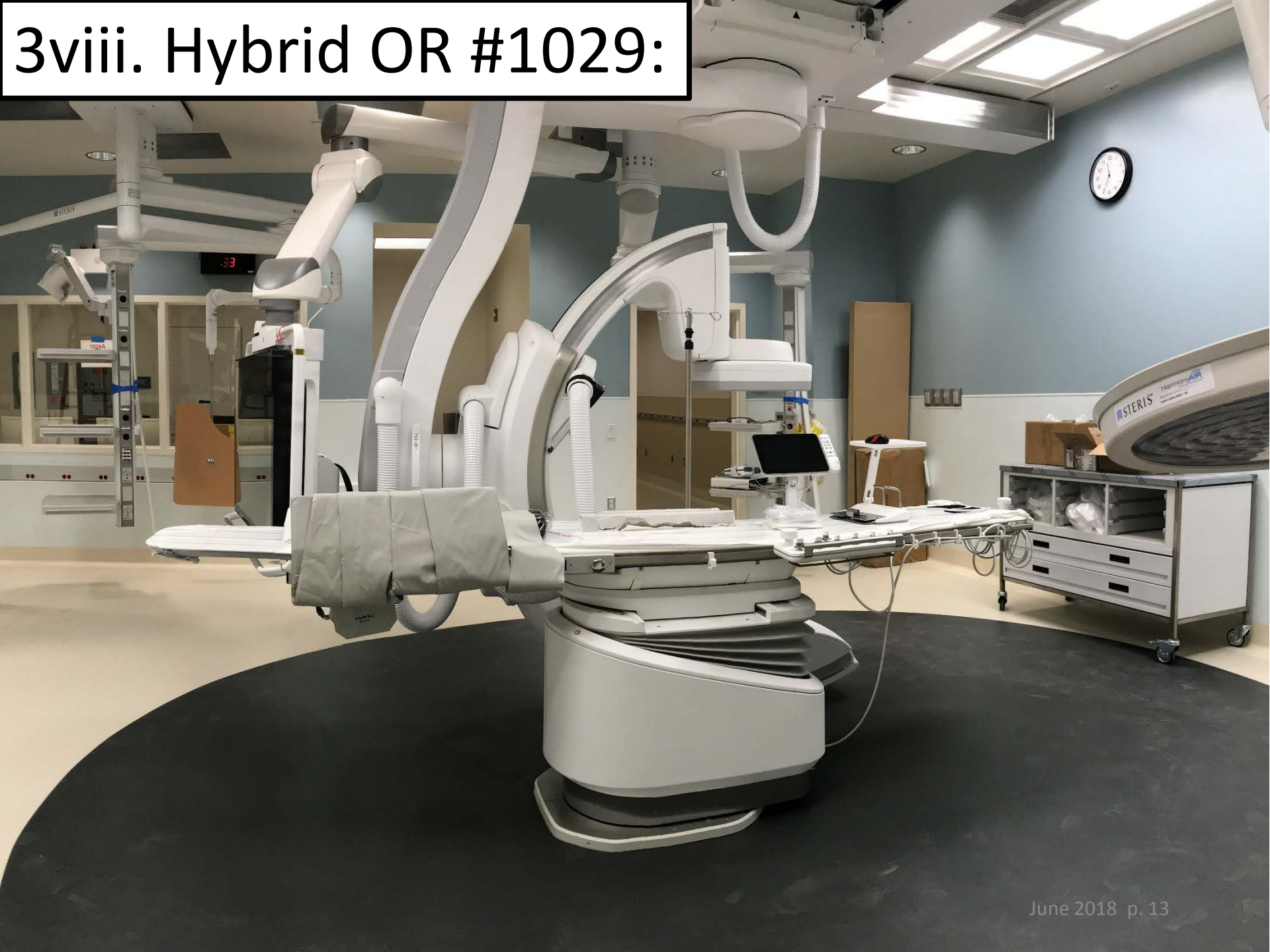
# 3vi. General OR #1025:



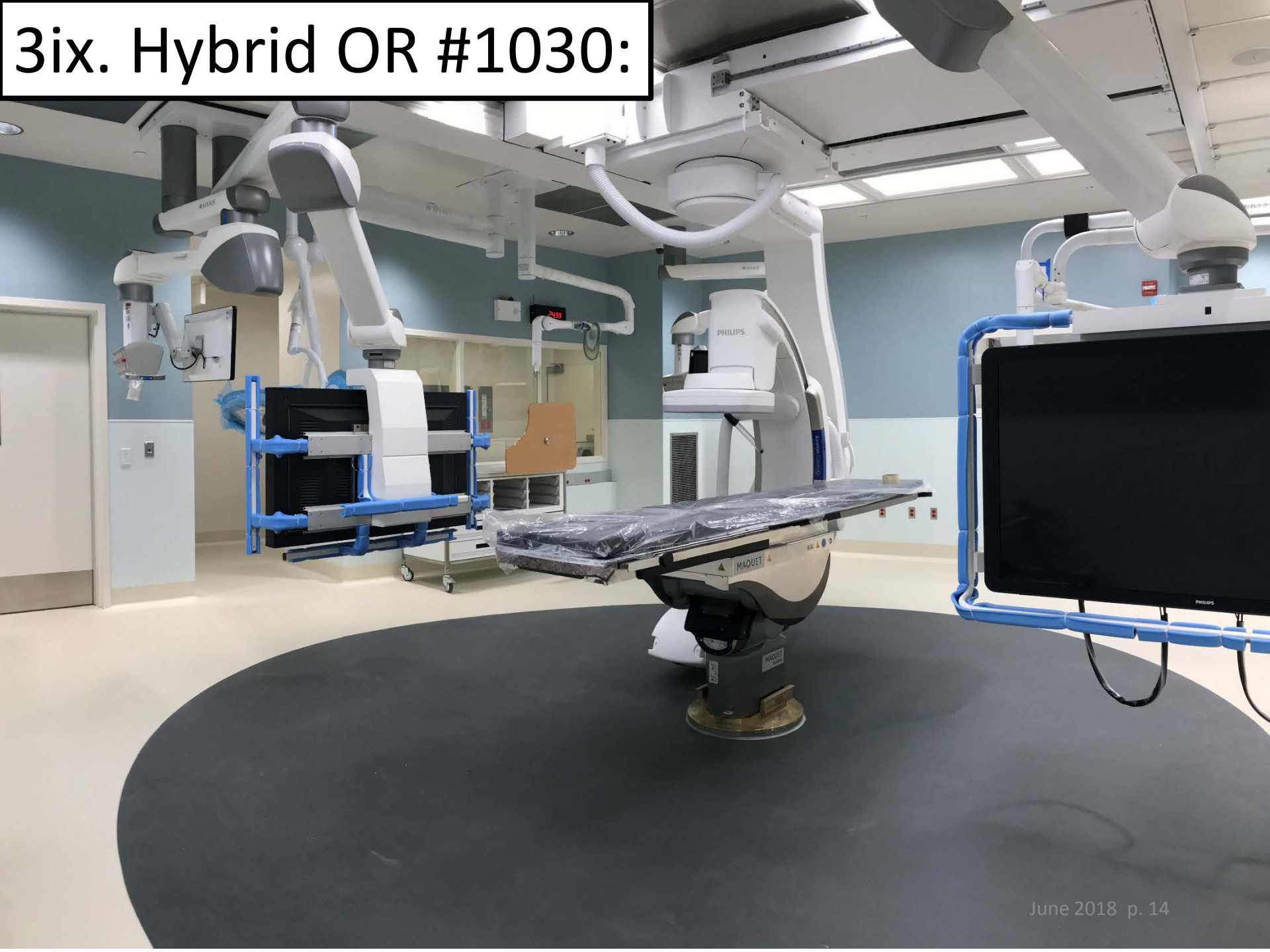
# 3vii. Open Heart OR #1027:



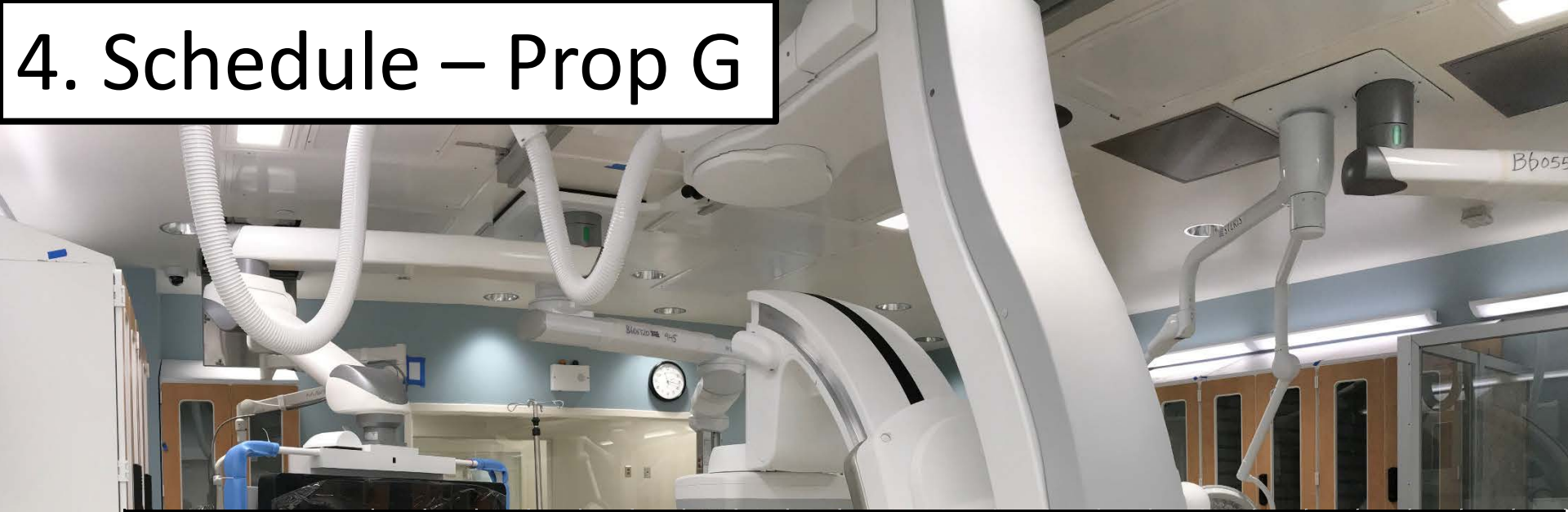
# 3viii. Hybrid OR #1029:



# 3ix. Hybrid OR #1030:



# 4. Schedule – Prop G



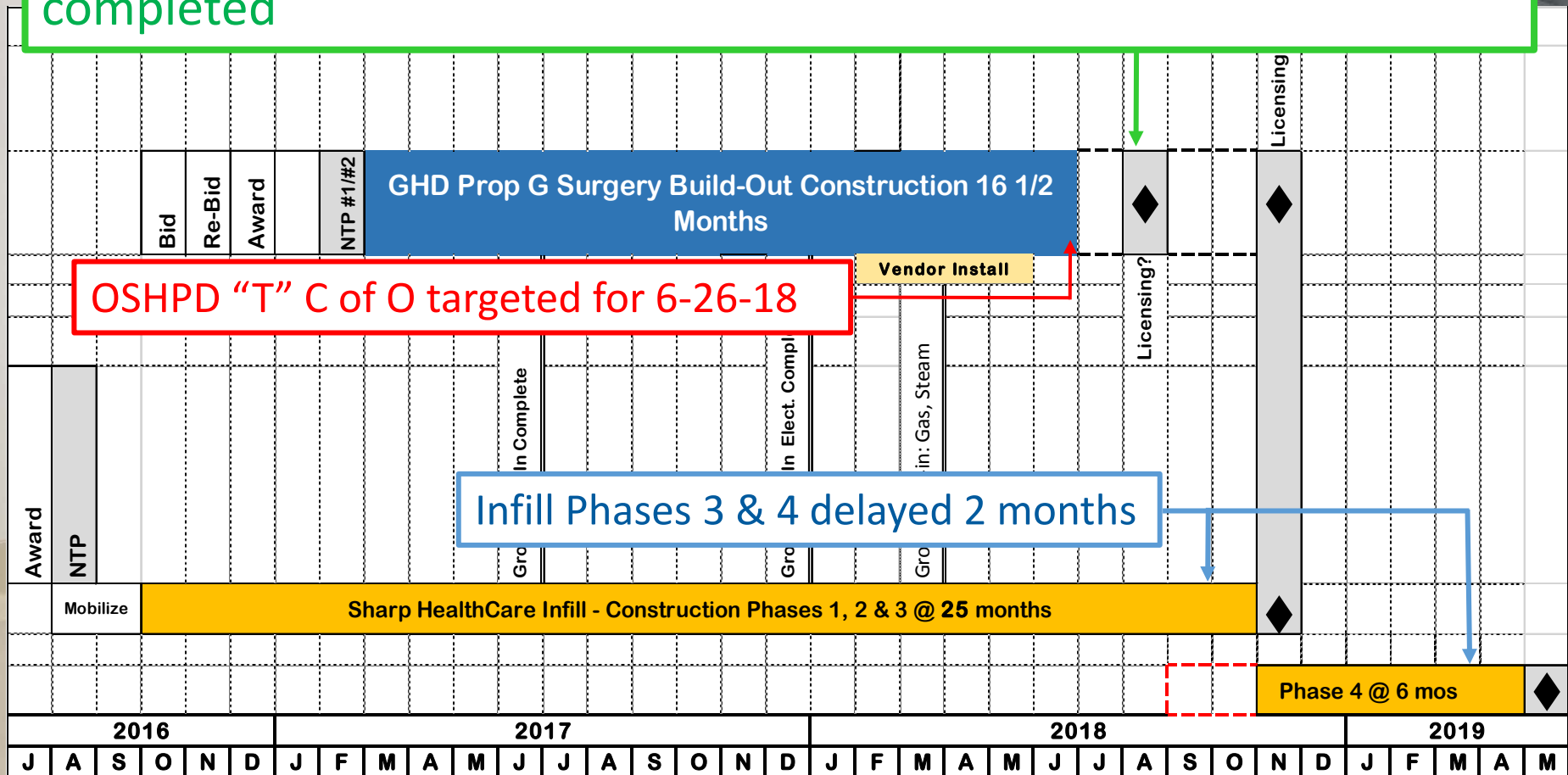
															<b>Updated 6-21-2018</b>										
<b>Prop G Level 1 Surgery Build Out</b>																					<b>Licensing</b> ◆				
	Bid	Award		NTP #1/2	<b>Construction</b>																				
	N	D	J	F	M	A	M	J	J	A	S	O	N	D	J	F	M	A	M	J	J	A	S		
	2016		2017												2018										

**We are here**



# 4. Schedule: Prop G + Sharp Infill

Once OSHPD issues a Temporary Certificate of Occupancy, the Hospital will apply for licensing from CDPH, requesting utilization of the Build Out ORs and Cath Labs BEFORE Infill Phase 3 is completed



# 5. Budget

Category	Project Name	Projected Cost At Completion (06/21/18)	Projected Cost At Completion (05/23/18)
Current Funds Available	Total Prop G Building Fund (Bond and Settlement Proceeds, Interest Earned, Grants, Etc.)	\$ 260,982,543	\$ 260,982,543
Projects Completed	Central Energy Plant, ED-CCU, Heart & Vascular Bldg, East Tower Renovation, Early Utilities	\$ 225,834,531	\$ 225,834,531
	Remaining Prop G Building Funds	\$ 35,148,012	\$ 35,148,012
Projects Under Construction	H&V Level 1 Surgery Floor Buildout	\$ 34,194,527	\$ 34,194,527
	Forecast Potential Surplus	\$ 953,485	\$ 953,485

# 6. Snapshot on Sharp HealthCare Infill Project

- CDPH approval rec'd for Phase 2 (PACU's, Nurse Station, Sterile Storage)
- Complete install of scaffolding south of H&V building for Phase 3
- Complete build of construction barriers, Phase 3
- Complete cut/cap of existing OR Air & Exhaust systems



Phase 3 Barrier Install



Start Demolition of former Prep B

# 7. Looking Ahead

- Complete Functional Performance Testing of essential systems
- Complete 3<sup>rd</sup> party commissioning of HVAC, and electrical systems
- Helix Water District to continue with waterline replacement (completion anticipated August, 2018)
- Complete installation of software to support medical equipment in all ORs and Cath Labs, projected into late July
- Issue Notice of Completion

A photograph of a forest path next to a rocky cliff face. The path is on the left, covered in fallen leaves and sparse grass. The cliff face is on the right, showing layered rock formations and some moss. The trees are dense and green, with sunlight filtering through the canopy. The word "Questions?" is overlaid in white text on the left side of the image.

Questions?