

The background features a grid of Olympic medals. The top row shows three medals (gold, silver, bronze) with their respective ribbons (green, blue, red) and the Olympic rings logo. The middle row shows three medals (gold, silver, bronze) with the Olympic rings logo and the text 'XXXI Olympische Spiele 2016'. The bottom row shows three medals (gold, silver, bronze) with the Olympic rings logo and the text 'XXXI Olympische Spiele 2016'.

**Prop G**  
**Monthly Progress Report**  
**August 2016**

The background of the slide features a repeating pattern of Olympic medals and ribbons. The ribbons are in shades of green, purple, and blue, each with the Olympic rings logo. The medals are shown in three colors: silver, gold, and bronze. Each medal is embossed with the Olympic rings and the text 'XIII Olimpiada Rio 2016'.

# Reflection

“Find the good. It’s all around you. Find it, showcase it and you’ll start believing in it.”

**-Jesse Owens**

The background of the slide features a collection of Olympic medals. In the center, a gold medal is prominently displayed, showing the Rio 2016 Olympic logo and the Olympic rings. To its left and right are silver and bronze medals, respectively, which feature the Olympic rings and the figure of Nike. The medals are arranged in a grid-like pattern, with some overlapping. The overall color palette is dominated by the metallic tones of the medals and the green and purple of the ribbons.

# Overview

1. Major Events
2. Schedules
3. Project Status
4. Budgets
5. Looking Ahead

# 1. Major Events

- There were no reportable safety incidents .
- McCarthy completed the CEP punch list.
- Demo of the HVSB Wall began in the existing Central Utility Plant.
- The H&V Level 1 Surgery Floor Build Out “cleaned up” plans were approved by OSHPD.

# 2. Schedules

<b>Updated 8-22-2016</b>	<b>2016</b>				<b>2017</b>				<b>2018</b>				<b>2019</b>			
<b>Projects</b>	Q1	Q2	Q3	Q4	Q1	Q2	Q3	Q4	Q1	Q2	Q3	Q4	Q1	Q2	Q3	Q4
<b>CEP &amp; Co-Generation</b>	█	█	█	█	<b>By October 31</b>											
<b>Final site work &amp; O2 Tank</b>			█	█	<b>By October 31</b>											
<b>Heart &amp; Vascular Building</b>	█	█														
<b>Heart &amp; Vascular Site Work</b>			█	█	<b>By October 31</b>											
<b>H&amp;V - Surgery Build Out</b>				<b>Oct Board</b>							<b>CDPH</b> ★				<b>CDPH</b> ★	
<b>Prop G Scope</b>				<b>Construction</b>										<b>CDPH</b>		
<b>Sharp Scope</b>			<b>Construction</b>													

# 3. Project Status

## Heart and Vascular

- The project is 98% complete.
- An existing air balance issue on Level B that was threatening final OSHPD sign off was resolved.
- Positive progress was made on the Helix Water Line, Steam Line and South Loading Dock Enhancements.
- Final Air Handler Tie In was completed.

# Heart and Vascular



North Steam Line

# Heart and Vascular



North Steam Line and Hardscape Preparations

# Heart and Vascular



Cart Wash Location

# 3. Project Status

## Central Energy Plant

- The project is 99% complete.
- Punch list was completed.
- HVSB Wall Relocation work began.
- Medical Gas work associated with the Oxygen Farm progressed.
- Preparations were made to conduct the Level 5 Commissioning test.

# Central Energy Plant



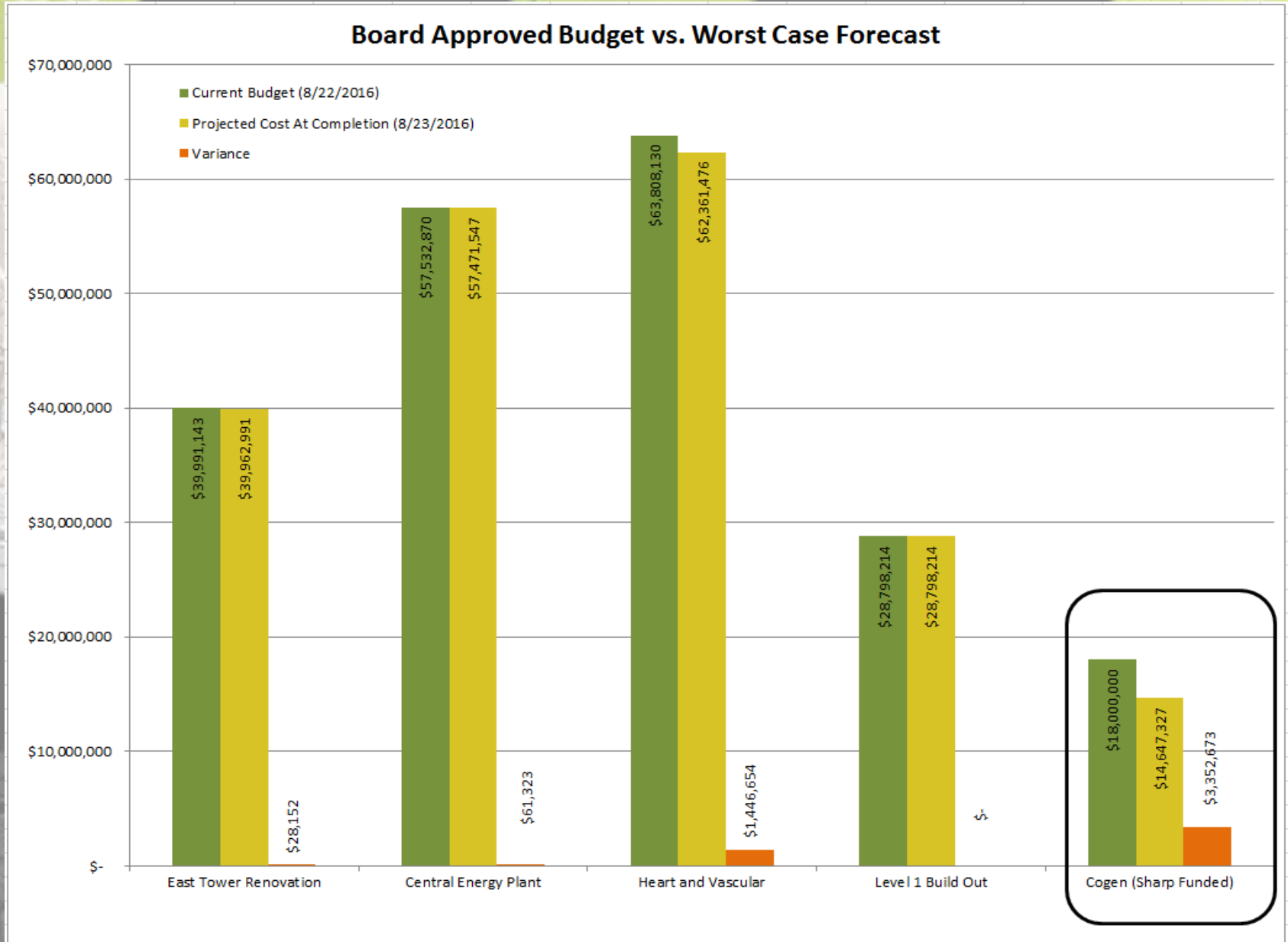
Demo of Existing Systems

# 4. Budget

## Available Funds vs. Worst Case Forecast

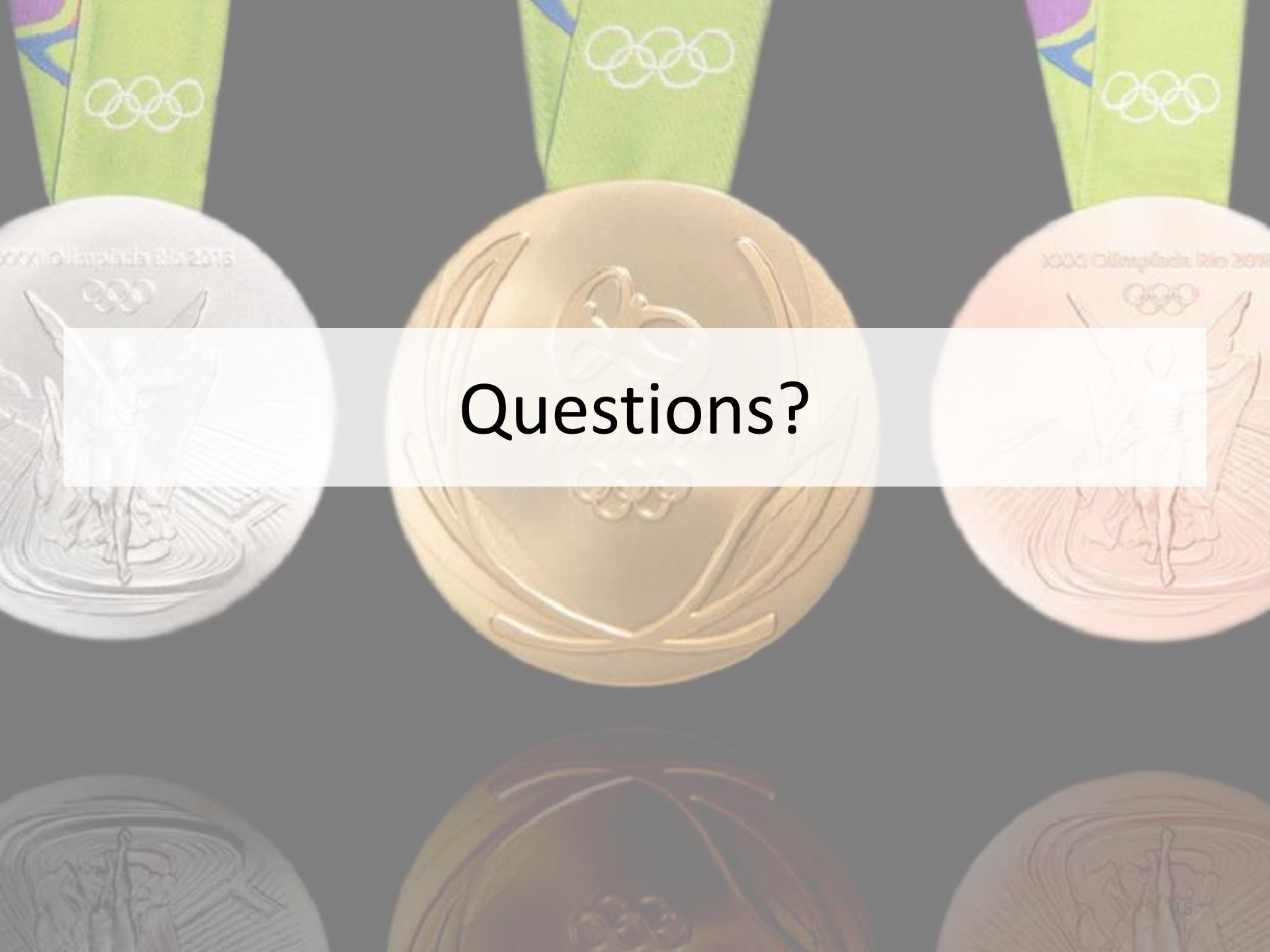
Category	Project Name	Projected Cost At Completion (8/23/2016)	Projected Cost At Completion (7/21/2016)
<b>Funds Available</b>	<b>Total Prop G Building Fund (Bond Proceeds, Interest Earned, Grants, Etc.)</b>	<b>\$ 256,809,326</b>	<b>\$ 256,809,326</b>
<b>Worst Case Forecast for Projects Completed or Under Construction</b>	E Tower Phase 1	\$ 249,566	\$ 249,566
	Early Utilities and North Dock	\$ 13,313,098	\$ 13,313,098
	ED-CCU	\$ 40,514,579	\$ 40,514,579
	CEQA	\$ 104,211	\$ 104,211
	Central Energy Plant	\$ 57,471,547	\$ 57,396,138
	Heart and Vascular	\$ 62,361,476	\$ 62,237,283
	East Tower Renovation	\$ 39,962,991	\$ 39,962,314
	South Dock / Level B Seismic Upgrades	\$ 11,998,902	\$ 11,998,902
	Bond Issuance Costs (Current Projection)	\$ 498,613	\$ 498,613
		<b>Total Worst Case Scenario for Projects Completed or Under Construction</b>	<b>\$ 226,474,983</b>
	<b>Remaining Prop G Building Funds before H&amp;V Level 1 Surgery Floor Build Out Project</b>	<b>\$ 30,334,343</b>	<b>\$ 30,534,622</b>
<b>Projects Not Under Construction</b>	<b>H&amp;V Level 1 Surgery Floor Build Out (Current Estimate, Bid and Board Award Pending)</b>	<b>\$ 28,798,214</b>	<b>\$ 28,798,214</b>
	<b>Potential Surplus</b>	<b>\$ 1,536,129</b>	<b>\$ 1,736,408</b>

# Board Approved Budget vs. Worst Case Forecast



# 5. Looking Ahead

- Conduct the Level 5 Commissioning Test.
- Continue construction of the Oxygen Farm, HVSB Wall Relocation, and complete demo of unneeded systems the existing plant.
- Continue work on Helix Water line, steam line and South Loading Dock enhancement scopes.
- Bring a recommendation to replace HOK on H&V Level 1 Surgery Floor Build Out.
- Bring a recommendation to add Kate Herring to the H&V Level 1 Surgery Floor Build Out Project Manager.



Questions?