



# Prop G Projects Monthly Report

October 2014





# Reflection

*Everybody needs beauty as well as bread, places to play in and pray in, where nature may heal and give strength to body and soul.*

*- John Muir*

# Overview

1. Major Monthly Events
2. Schedules
3. Project Status
4. Budgets
5. Looking Ahead



# Major Monthly Events

1. Board approved PBG Appeal to Bid on Surgery Build Out.
2. OSHPD approved PADs required for Utility Trellis for CEP.
3. Final arrangements in place for high voltage electrical connection to new CEP in December.



# Major Monthly Events

3. Accelerated Schedule for East Tower brings 3<sup>rd</sup> floor back to finish before Thanksgiving instead of early 2015.
4. Planning for Kitchen disruption during Surgery Build Out in progress. New schedule for RFP release in January, pending CDPH and County Health approval of Kitchen work for seismic reinforcements.
5. All hands review of the Surgery Build Out with the Surgery staff on 10/22.
6. Special ICBOC meeting to review Worst Case Forecast and 5 pending PCOs.

COMPLIANCE OVERVIEW	Incident Dashboard					
	Safety / CAL OSHA		Regulatory Compliance / OSHPD (Notice of Non-Compliance)		Infection Control	
Project	Yes	No	Yes	No	Yes	No
East Tower		<input checked="" type="checkbox"/> 2 Safety Audits	<input checked="" type="checkbox"/> 1 – Transformer install (code interpretation under review)			<input checked="" type="checkbox"/> Minor issues, corrected real time
Heart & Vascular		<input checked="" type="checkbox"/> 2 Safety Audits	<input checked="" type="checkbox"/> 1 – “Z” clips corrected 1 – S. Dock roof damage, being corrected			<input checked="" type="checkbox"/>
CEP / Co-Gen		<input checked="" type="checkbox"/> 2 Safety Audits		<input checked="" type="checkbox"/>		<input checked="" type="checkbox"/>

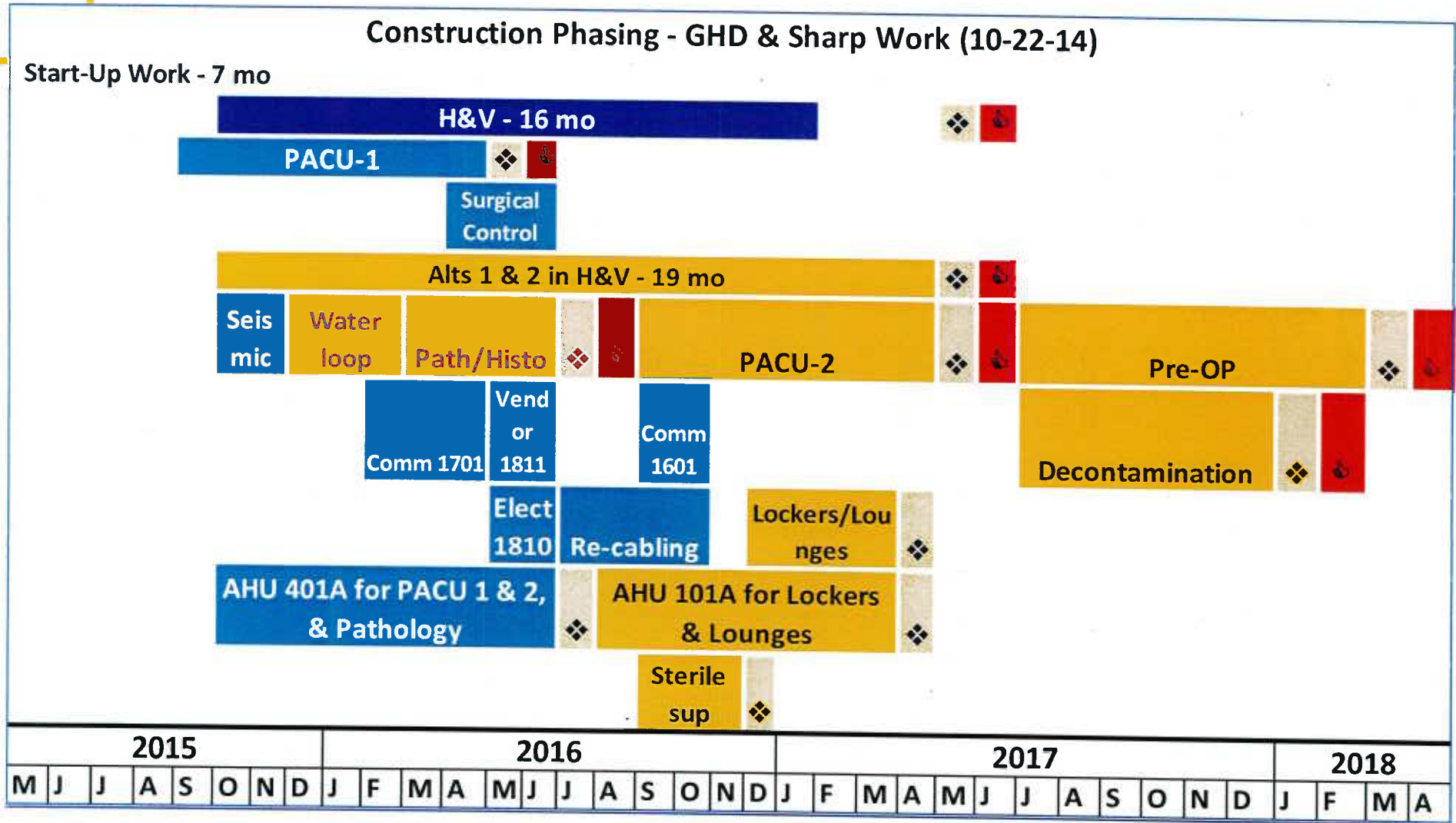
# 2. Schedule – All Projects

Updated 10-14

Projects	2014			2015				2016				2017				2018	
	Q2	Q3	Q4	Q1	Q2	Q3	Q4	Q1	Q2	Q3	Q4	Q1	Q2	Q3	Q4	Q1	Q2
CEP & Co-Generation	Construction																
E. Tower - All Floors	Construction																
Heart & Vascular w/ Level A & B	Construction					Building, Lab & Pharmacy Complete June 2015											
H&V - Surgery Build Out																	
Prop G Scope						Construction						★ CDPH					
Sharp Scope					Construction												

Surgery Floor Build Out  
Complete March 2018

# Surgery Build Out Schedule



Legend:

= District

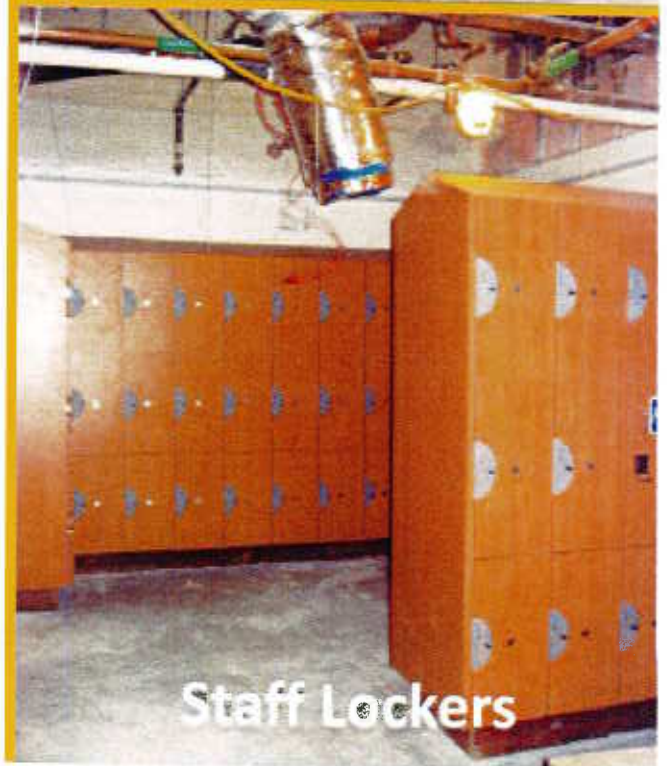
= Sharp

= Occupancy / Licensing

= Go Live Patient Care

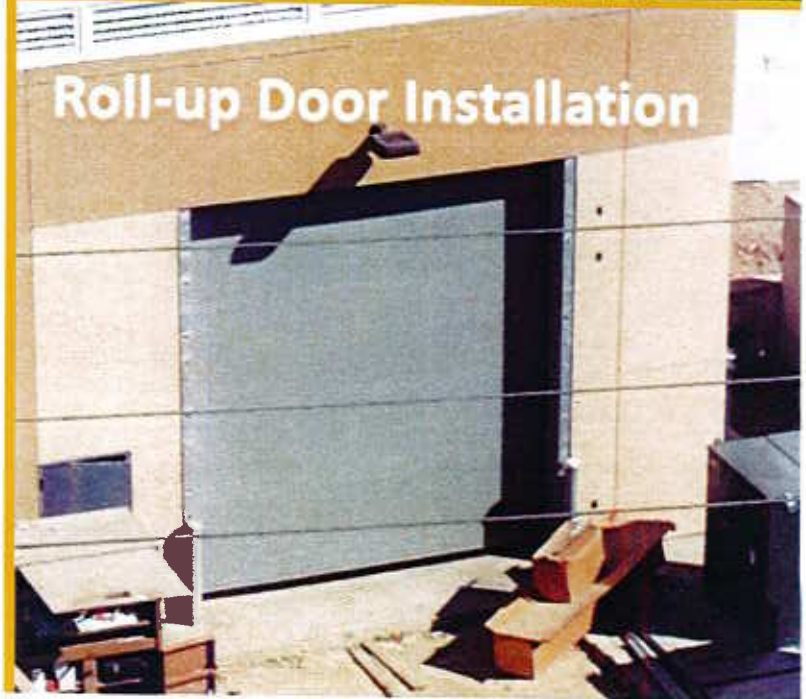
### 3. Project Status: East Tower

- Third Floor work continues on a accelerated (10 hours/day & 6 days a week) schedule.
- CW Driver working hard to offset initial delays on this floor due to unforeseen OSHPD permitting requirements to raise the toilet carriers.
- Cost of acceleration determined to be less than delay costs.



### 3. Project Status: CEP

- Interior fire wall corrections 95% complete.
- Most of the roll-up doors are installed.
- Domestic water meter & vault work completed.
- Utility Tunnel connection work started.
- Work started for the HVSB cutover in December.
- Work continues on the Inter-Connect agreement for the Co-Generation plant.



### 3. Project Status: H&V



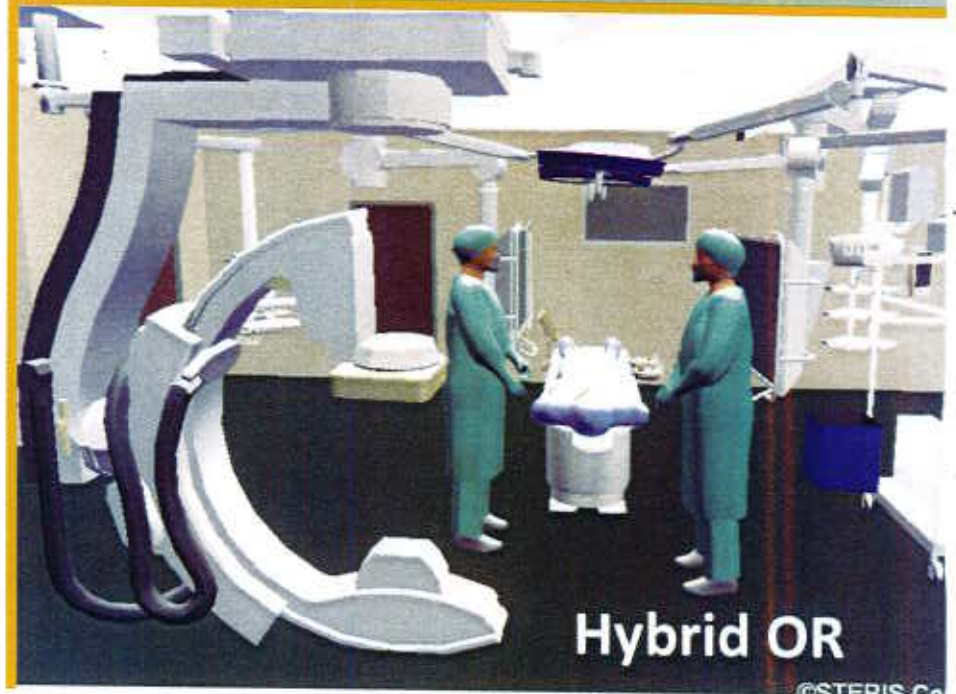
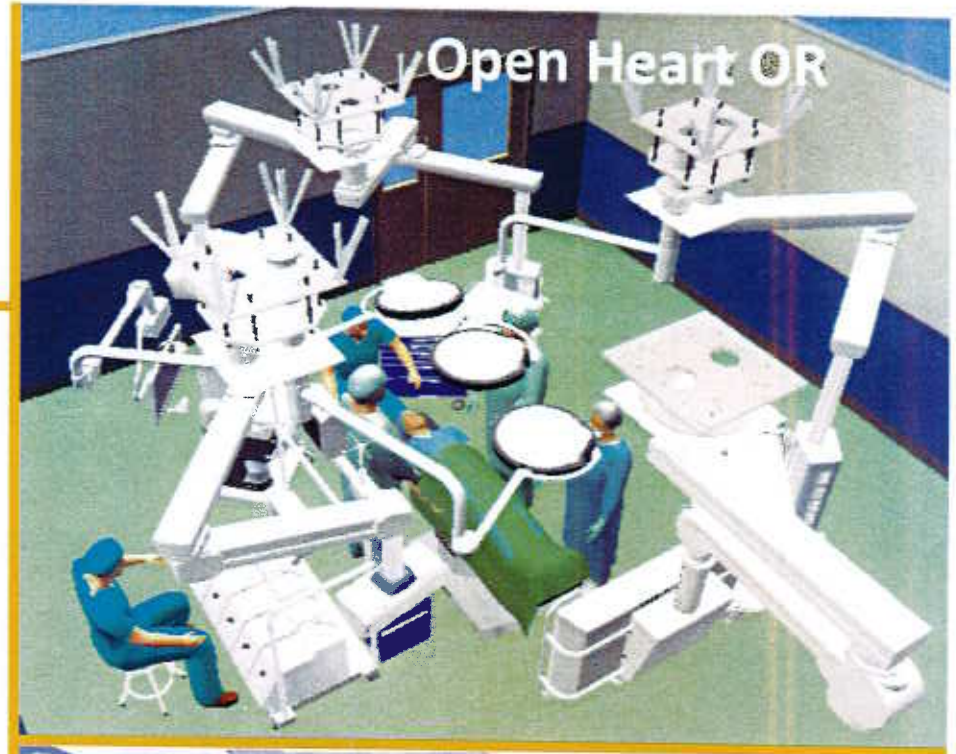
### 3. Project Status: H&V

- Concrete @ 99% complete.
- Exterior Skin @ 50% complete.
- Structural steel fireproofing is complete.

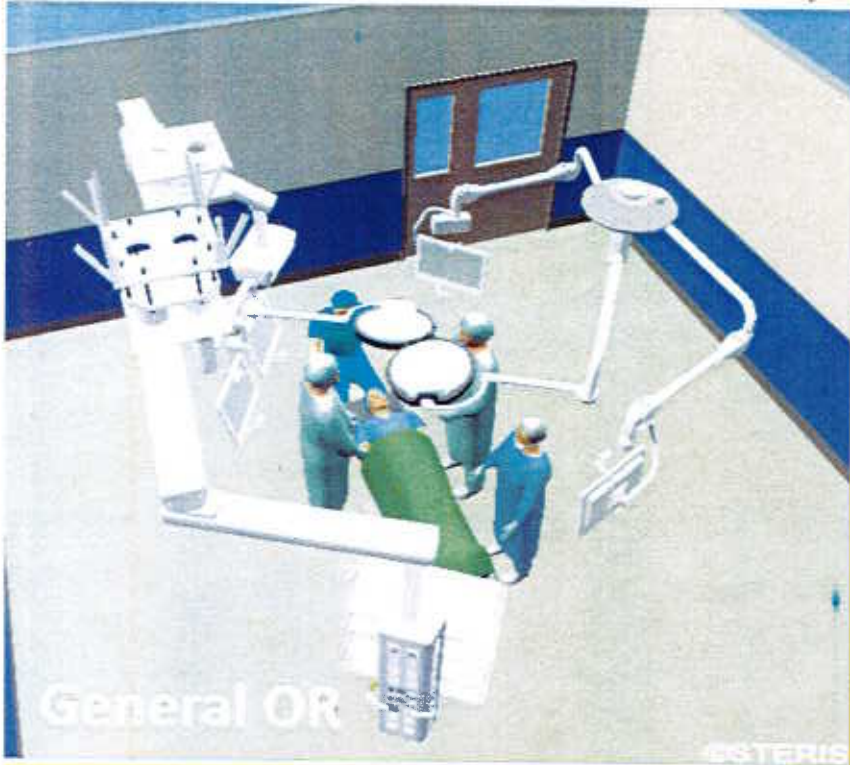


### 3. Project Status: Surgery Build Out

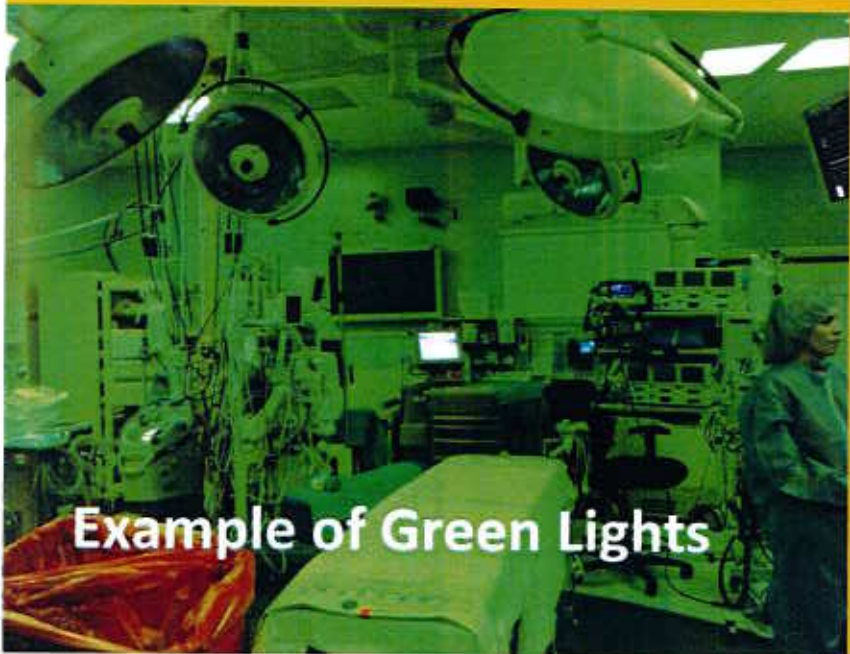
- 4 Qualified Bidders
- Pending CDPH and Co. Health approval of Kitchen work, Permit due by 1/1/15
- New Bidding Schedule:
  - Invitation to Bid released 1/12/15
  - Bids Due 3/13/15



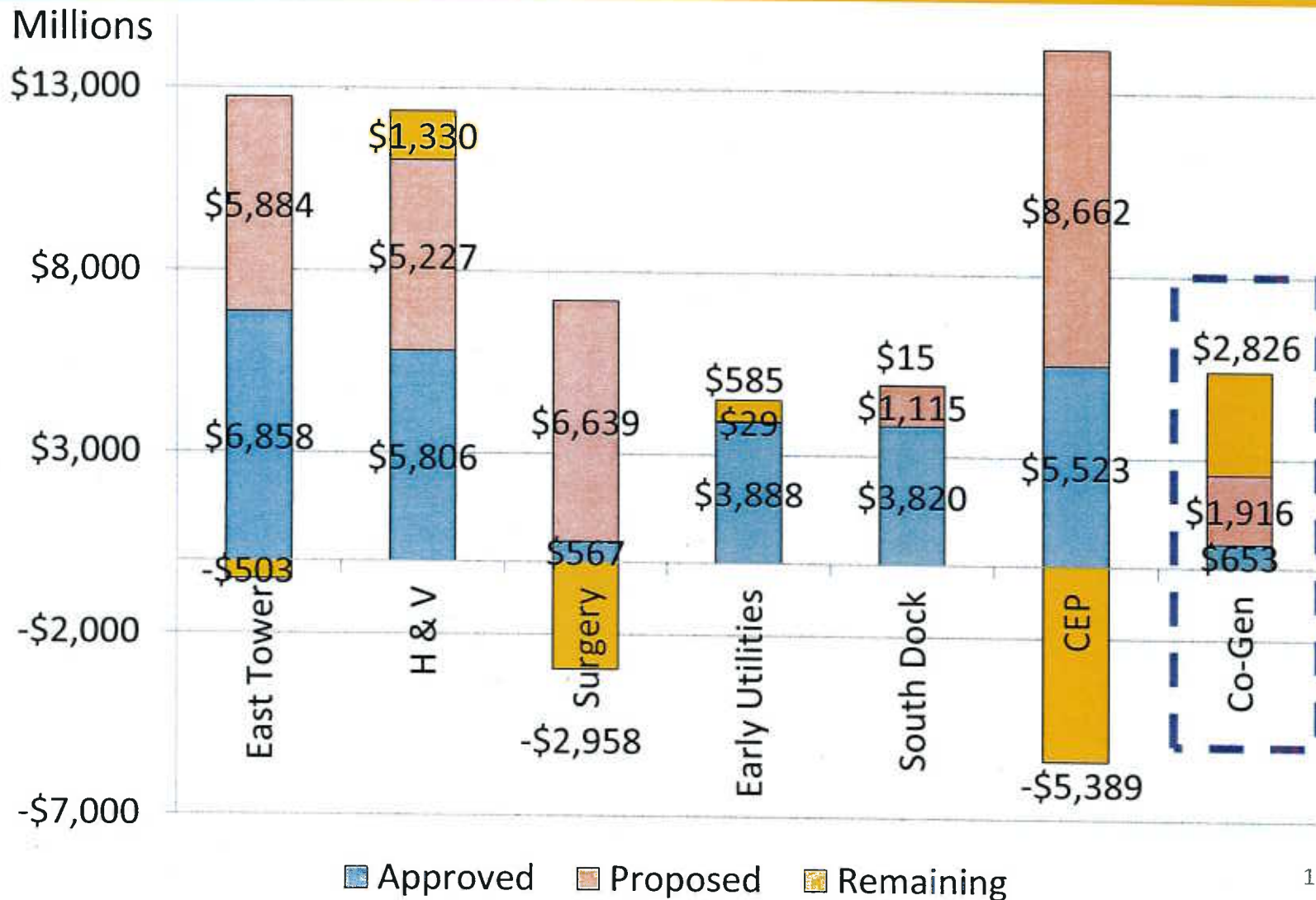
# OR Features



- ORs
  - 25 air exchanges/hour
  - HEPA filters at each OR room
  - Room Controls for temperature, humidity & volume
- Open Heart OR also has:
  - Variable temperature control from 64 to 74 degrees
  - Green lighting option to improve clarity (similar to Stephen Birch)



# 4. Budget Contingency Funds – 10/24/14



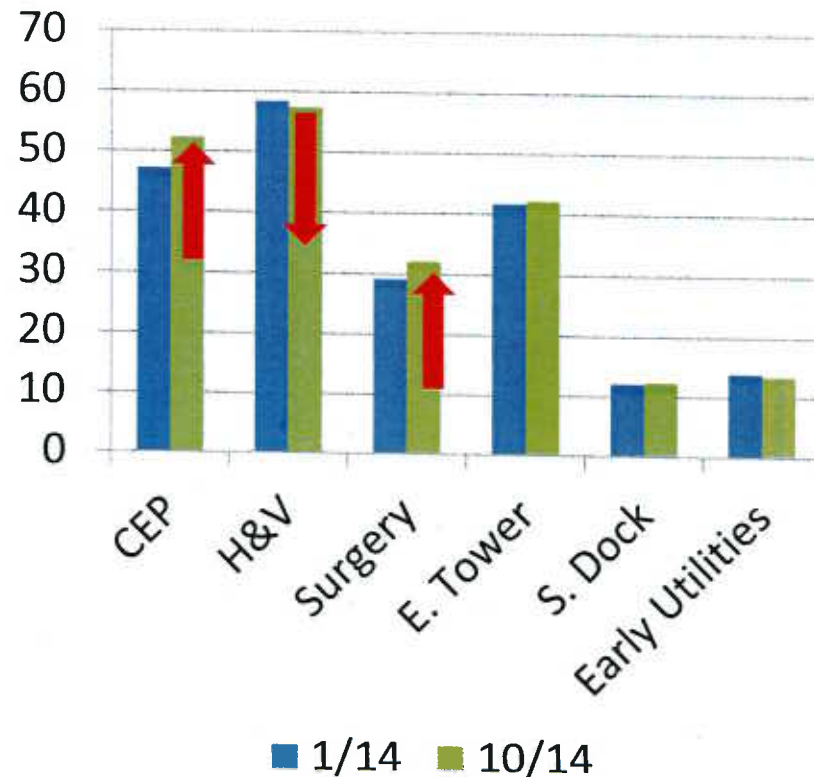
# 4. Budget

## Updated Worst Case Forecast

- The Projects need another \$6.8M
- 4 big drivers:
  - CEP increase of \$5.23M
  - Surgery increase of \$2.95M
  - Heart & Vascular decrease of (\$1M)
  - Other minor decreases of (\$0.4M)

January Forecast vs.  
September Forecast

Millions



# Potential Deficit Reduction Opportunities



\$	Item
\$1M	Prop G interest earned
\$250K	Indian Gaming Grant
\$1M	Co-Gen SGIP Energy Credit
\$ ?	Sale of old CEP equipment
\$ ?	Sale of Carbon (NOx) Credits from old CEP equipment
\$2.8M	Co-Gen Loan Surplus

# Let's look at the Schedule to understand when we need resolve the shortfall?

Updated 10-14

Projects	2014			2015				2016				2017				2018				
	Q2	Q3	Q4	Q1	Q2	Q3	Q4	Q1	Q2	Q3	Q4	Q1	Q2	Q3	Q4	Q1	Q2			
CEP & Co-Generation	Construction																			
E. Tower - All Floors	Construction																			
Heart & Vascular w/ Level A & B	Construction							Building, Lab & Pharmacy Complete June 2015												
H&V - Surgery Build Out																				
Prop G Scope								Construction												
Sharp Scope								Construction												



Board Awards  
Surgery Build Out  
April 2015



CDPH

Surgery Floor Build Out  
Complete March 2018

# Which sources can we confirm by 4/15?

Can Contribution Be Confirmed	\$	Item
Yes	\$1M	Prop G interest earned
Yes	\$250K	Indian Gaming Grant
Yes / Maybe	\$1M	Co-Gen SGIP Energy Credit
Yes / Maybe	\$ ?	Sale of old CEP equipment
Yes	\$ ?	Sale of Carbon (NOx) Credits from old CEP equipment
TBD	\$2.8M	Co-Gen Loan Surplus (impacts SGH Operations Budget)



## 5. Looking Ahead

---

- East Tower 3<sup>rd</sup> Floor to finish close to the end of November.
- Final preparations to be in place for December 8<sup>th</sup> cutover of high voltage power to new CEP.
- Obtain CDPH & Co. Health approval for seismic work in Kitchen. File with OSHPD.
- Finish all work on Surgery Invitation to Bid.

# Woman's Center Update



## Phase 2 –

- 2<sup>nd</sup> 5 rooms are under construction
- To be completed by the end of October

Questions?

