



# GROSSMONT HEALTHCARE DISTRICT PROPOSITION G DESIGN & CONSTRUCTION SERVICES

*Monthly Project Construction Report  
For the month of \_\_\_\_\_*

**Project:** \_\_\_\_\_

**Updated:** \_\_\_\_\_

**Contractor:** \_\_\_\_\_

**Architect:** \_\_\_\_\_

CEP Construction Budget Status	\$	Work In Place % Complete	Schedule Status	
Award Amount:			Contract Award:	
			Executed Contract:	
Approved CO's:			Original Completion:	
			Duration % Complete:	
Revised Contract:			Approved Time Extension:	
Invoiced to Date:			New Completion:	
<b>Balance</b>			Project Scheduled Variance:	
Total Forecast Pending CO's:			Forecast Completion:	
<b>Forecast Adjusted Budget</b>			% Complete per forecast:	

<b>RISK STATUS</b>	Budget:	Schedule:
--------------------	---------	-----------

COGEN Construction Budget Status	\$	Work In Place % Complete	Schedule Status	
Award Amount:			Contract Award:	
			Executed Contract:	
Approved CO's:			Original Completion:	
			Duration % Complete:	
Revised Contract:			Approved Time Extension:	
Invoiced to Date:			New Completion:	
<b>Balance</b>			Project Scheduled Variance:	
Total Forecast Pending CO's:			Forecast Completion:	
<b>Forecast Adjusted Budget</b>			% Complete per forecast:	

<b>RISK STATUS</b>	Budget:	Schedule:
--------------------	---------	-----------

## Incident Dashboard

Month	Safety - CAL OSHA Incident		Regulatory Compliance / OSHPD (Notice of Non-Compliance)		Infection Control Breach	
	Yes	No	Yes	No	Yes	No
January						
February						
March						
April						
May						
June						
July						
August						
September						
October						
November						
December						
<b>Total</b>						



# GROSSMONT HEALTHCARE DISTRICT PROPOSITION G DESIGN & CONSTRUCTION SERVICES

## *Monthly Project Construction Report- April 2016* *Central Energy Plant/CoGen*

### **Safety –CAL OSHA:**

- There were no reportable incidents in April.

### **Regulatory Compliance/OSHPD (Notice of Non-Compliance):**

- There were no reportable incidents in April.

### **Infection Control Issues/Status:**

- Infection control barriers are in place and in compliance.

### **Overall Progress:**

#### *(Interior)*

- Beneficial occupancy was issued by OSHPD.
- The chilled water system is carrying the entire campus load.
- Boilers have completed startup and are in a hot stand by as the Heat Recovery Steam Generator (HRSG) carries the steam load.
- Refrigerant alarm testing is complete except for the installation of the UPS.
- The 950 Ton Steam Chiller is in place and in the process of final connections.
- The control room desk and all other control room furniture are in place.
- The hospital plant operators have taken occupancy of the plant and are now permanently feeding utilities to the campus.

#### *(Exterior)*

- The lower parking area is complete, including the asphalt area over the CEP vault and tunnel.
- The contractor is working on water proofing issues at the exterior walls.
- Cooling tower actuators are in place and waiting power and control from the SCADA system.
- Landscaping and irrigation is complete and now in the 90 day maintenance period.

### **Existing Central Utility Plant (CUP);**

- Steam and Chilled Water flex connectors are completed.
- The O2 temporary fill point is complete, and final connections are being made to the new Air Liquide telemetry equipment.
- The high pressure gas line to the old turbines will be purged and demolished by the end of the month.
- Demolition of the existing plant is slated to start the beginning of May.

### **COGEN Status:**

- The Solar Turbine is operating and carrying the load of the campus. It has also been paralleled to the SDGE grid and has the capacity to export if necessary.
- The HRSG and Duct Burner have been fully started and are currently carrying the campus steam load.
- The Solar Extended Service Agreement has been signed by Sharp and Solar.
- The Solar black start test was completed without any major complications.



# GROSSMONT HEALTHCARE DISTRICT PROPOSITION G DESIGN & CONSTRUCTION SERVICES

## Construction Status Photos:



*Aerial Photo of the new H&V and CEP*



*950 Ton Steam Chiller Installed*



*Solar Turbine carrying the campus load at 3.8 MW*

## Design Issues:

- Chilled water seismic bracing in the West Tower tunnel.
- Medical gas supports in the existing CUP.
- HVSB wall removal.
- Existing Cooling Tower support steel for new chilled water piping.

## Construction Issues:

- SCADA failed the site acceptance test. Retest is scheduled for 4/17/16. It is unknown if this date will be made.
- The design team punch list is very extensive and a completion date is currently unknown.
- Refrigerant alarm UPS has not been installed.

Prepared By: Nick Aden



# GROSSMONT HEALTHCARE DISTRICT PROPOSITION G DESIGN & CONSTRUCTION SERVICES

*Monthly Project Construction Report  
For the month of \_\_\_\_\_*

**Project:** \_\_\_\_\_

**Updated:** \_\_\_\_\_

**Contractor:** \_\_\_\_\_

**Architect:** \_\_\_\_\_

Construction Budget Status	\$	Work In Place % Complete	Schedule Status	
Award Amount:			Contract Award:	
			Executed Contract:	
Approved CO's:			Original Completion:	
			Duration % Complete:	
Revised Contract:			Approved Time Extension:	
Invoiced to Date:			New Completion:	
<b>Balance</b>			Project Scheduled Variance:	
Total Forecast Pending CO's:			Forecast Completion:	
<b>Forecast Adjusted Budget</b>			% Complete per forecast:	

<b>RISK STATUS</b>	Budget: _____	Schedule: _____
--------------------	---------------	-----------------

Incident Dashboard						
Month	Safety - CAL OSHA Incident		Regulatory Compliance / OSHPD (Notice of Non-Compliance)		Infection Control Breach	
	Yes	No	Yes	No	Yes	No
January						
February						
March						
April						
May						
June						
July						
August						
September						
October						
November						
December						
<b>Total</b>						



**GROSSMONT HEALTHCARE DISTRICT  
PROPOSITION G  
DESIGN & CONSTRUCTION SERVICES**

*Monthly Project Construction Report – April 2016  
Heart & Vascular Center*

**Safety- CAL OSHA:**

- There were no reportable incidents in April.

**Regulatory Compliance/OSHPD (Notice of Non-Compliance):**

- There were no reportable incidents in April.

**Infection Control Issues/Status:**

- Infection control barriers are in place and in compliance for April.

**Overall Progress:**

- Exit sign relay has been replaced and completed. Commissioning activities are still ongoing with McCarthy and their subs to continue to work on the issues log. McCarthy has been working on the punch list items and is wrapping up the Level B in preparation for occupancy approval by OSHPD ACO tentatively planned for 4/27/16.
- Level B Phase 2 work with the new EVS closet and tie-in into the existing is in progress with door frame and doors installed. The two (2) north elevators passed state inspection on 4/13/16 and are waiting for the elevator permit. Floor seal and base work is in progress. EVS closet and tie-in to the existing storage room is still in progress. It has been discovered that there is not enough conditioned air from the new Air Handler Unit to serve the Pneumatic Tube room. A new Fan Coil unit will need to supplement this space so the air balance can be completed for Level B Beneficial Occupancy. Level B Beneficial Occupancy with OSHPD approval is targeted for April 27, 2016.
- Level A remaining minor items are still wrapping up.
- Level 1 Beneficial Occupancy is targeted shortly after Level B, pending the new AHU tie-in into the existing kitchen duct.
- Phase 2 work to plan for the North Interim Dietary AHU unit and concrete work is in progress. The South Interim AHU unit demo and tie-in has begun with work estimated to start with Part 1 on 4/23/16 and Part 2 planned for early May. Work is pending site engineering to fix the air deficiencies with the Test and Air Balance (TAB) which they are currently working on.
- Phase 3 work with the north site underground Women's Center steam line is in progress with revised plans approved and pending with the steam pipe being fabricated from the manufacturer. The South Loading Dock has begun completion of the electrical work in preparation for the compactors. The remaining items are pending Level B Beneficial Occupancy to relocate to the new loading dock. All the required documentation has been submitted to Helix Water District and work on the 10" water line is estimated to begin after the pre-construction meeting with the Helix Water District. There is still a constraint with regard to the Med Gas underground utilities needing to be abandoned after the completion of the O2 Gas Farm prior to cutting into those lines.



# GROSSMONT HEALTHCARE DISTRICT PROPOSITION G DESIGN & CONSTRUCTION SERVICES

## Construction Status Photos:



**Level B AHU Duct Tie-in**



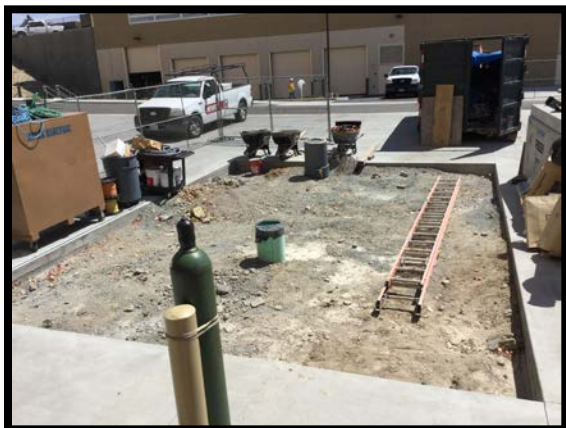
**Level B Flooring and Base Installation**



**South Loading Dock Pre-work**



**South Exiting and South Loading Dock**



**High Pressure Gas and Storm Drain**



**Level B EVS Closet Tie-in**



# GROSSMONT HEALTHCARE DISTRICT

## PROPOSITION G

### DESIGN & CONSTRUCTION SERVICES

#### **Design Issues:**

- The addition of the Level B P-tube storage room conditioned space has pushed the capacity above requirements.
- The Level B Test and Air Balance (TAB) of the existing hospital shows deficiency of air supplied to Level B.

#### **Construction Issues:**

- The High Pressure Gas line is still active and will need to be capped so that the storm water vault can be installed there.

#### **Corrective Action Plan** *(when applicable):*

- Design:
  - The design professional is coming up with the option of adding a Fan Coil unit to condition the P-tube room to give air back to the other spaces to meet requirement.
  - The Level B TAB deficiency is being reviewed by the site Engineering/POM team and they are currently making adjustments and corrections in the system.
- Construction:
  - The hospital is planning to cap the High Pressure Gas line at both connection points.

**Prepared By:** Gary Kiebel / Kevin Herr / Vicki Townsend