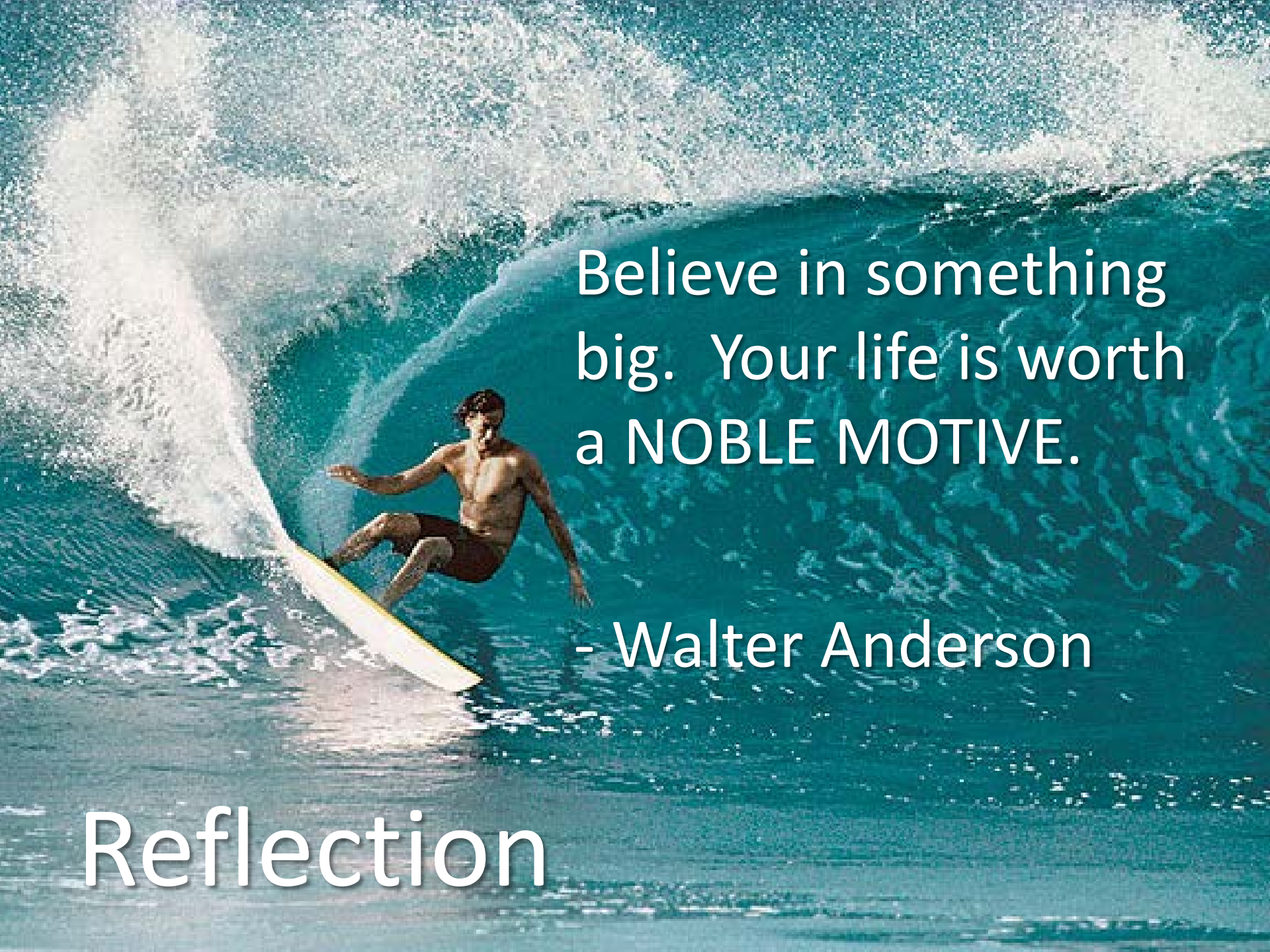


A vibrant photograph of a surfer in a black wetsuit riding a large, curling blue wave. The surfer is positioned in the lower-left quadrant of the frame. The background features a rugged, forested mountain range under a clear blue sky. The overall scene is dynamic and energetic.

November Progress Report Grossmont Healthcare District

**Board Report
December 2016**

A man in dark shorts is surfing on a yellow surfboard, riding a large, curling blue wave. The water is splashing around him, and the scene is captured in a dynamic, action-oriented style.

Believe in something
big. Your life is worth
a NOBLE MOTIVE.

- Walter Anderson

Reflection

Overview

1. Regulatory Compliance
2. Wrapping Up
3. Surgery Build Out
4. Schedule
5. Budget
6. Snapshot on Infill
7. Looking Ahead



1. Regulatory Compliance

November 2016

Project	Safety Event	Infection Control Breach	Notice of Non Compliance
CEP	0	0	3
H&V	0	0	0
Surgery Build Out	na	na	na



2. Wrapping Up – Central Energy Plant

- Complete all construction by the end of the year
- Final tasks include:
 - Complete work in old CEP
 - 2nd L5 test on 12/10/16



**Nitrogen & Nitrous Oxide
tanks complete**

2. Wrapping Up – Heart & Vascular

- Complete all construction by the end of the year
- Final tasks include:
 - Completion of signage and landscaping
 - Final testing on Helix water line

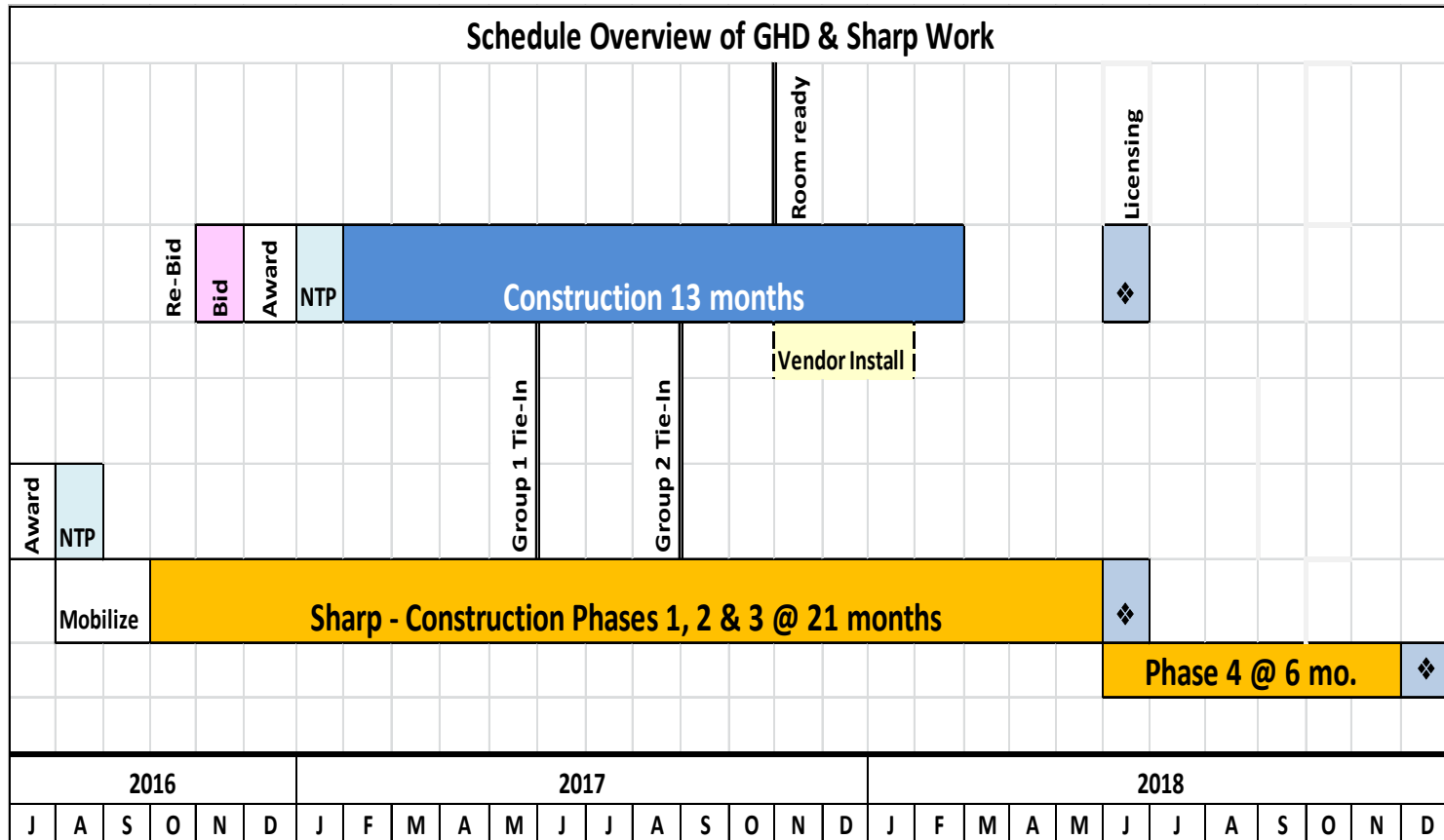


3. Surgery Build Out

- Following Re-bid of project, Bids were received 11/17.
- Low bid from Swinerton Builders for \$10,247,122
- Deadline for bid protest was 11/25. None received.
- Award of contract on the Board's agenda for 12/5.



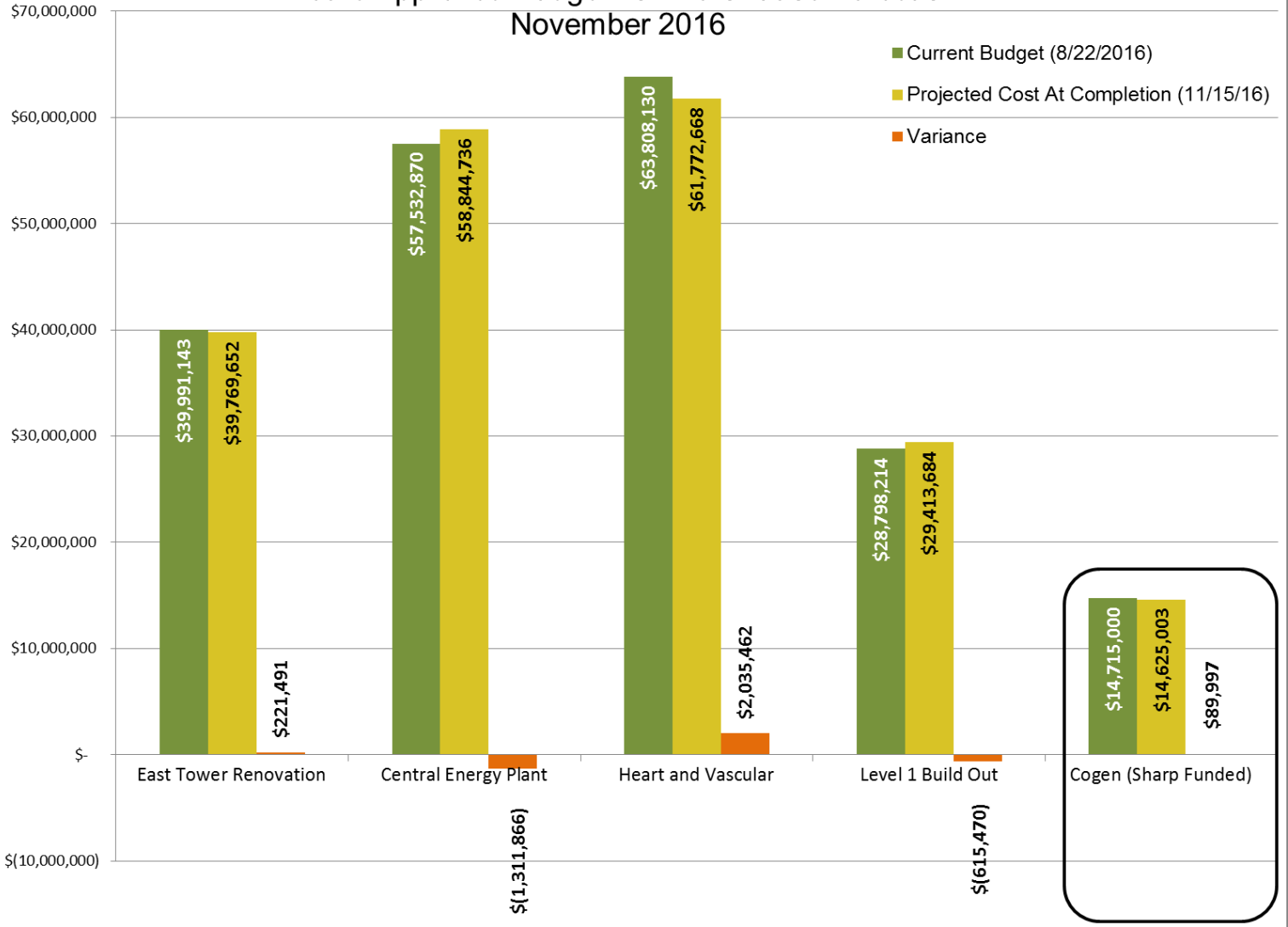
Combined Project Schedules



5. Budget

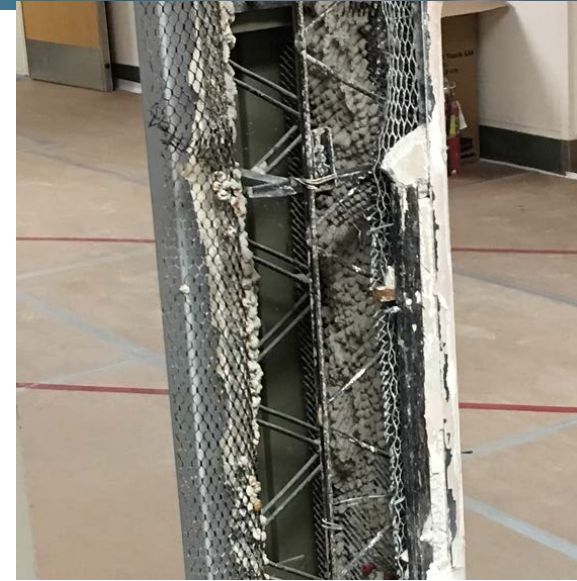
Category	Project Name	Projected Cost At Completion (11/15/16)	Projected Cost At Completion (10/27/16)
Funds Available	Total Prop G Building Fund (Bond Proceeds, Interest Earned, Grants, Etc.)	\$256,809,326	\$256,809,326
Worst Case Forecast for Projects Completed or Under Construction	E Tower Phase 1	\$ 249,566	\$ 249,566
	Early Utilities and North Dock	\$ 13,313,098	\$ 13,313,098
	ED-CCU	\$ 40,514,579	\$ 40,514,579
	CEQA	\$ 104,211	\$ 104,211
	Central Energy Plant	\$ 58,844,736	\$ 58,770,231
	Heart and Vascular	\$ 61,772,668	\$ 61,701,183
	East Tower Renovation	\$ 39,769,652	\$ 39,748,233
	South Dock / Level B Seismic Upgrades	\$ 11,998,902	\$ 11,998,902
	Bond Issuance Costs (Current Projection)	\$ 498,613	\$ 498,613
		Total Worst Case Scenario for Projects Completed or Under Construction	\$227,066,025
	Remaining Prop G Building Funds before H&V Level 1 Surgery Floor Build Out Project	\$ 29,743,301	\$ 29,910,710
Projects Not Under Construction	H&V Level 1 Surgery Floor Build Out (Current Estimate, Contract and Board Award Pending)	\$ 29,413,684	\$ 29,653,508
	Potential Surplus	\$ 329,617	\$ 257,202

Board Approved Budget vs. Worst Case Forecast November 2016



6. Snapshot on Infill

- Phase 1 demolition work reveals major unforeseen conditions
 - Pencil Studs
 - Additional Load bearing wall
- Corrective action plan under development
 - Cost and schedule impact TBD



Pencil Stud

Pencil Stud Conditions:

“U” shaped wire mesh pencil studs used for wall construction. Studs are not tied into the ceiling.



Wall “A”

Wall “B”

Additional Load Bearing Wall:

Wall “A” is the wall on the corridor facing the garden with the clay pots. Wall “B” is the surprise. It cannot be demolished without significant structural work.

7. Looking Ahead

- Complete wrap up work on CEP and H&V
- Continue discussions with McCarthy on a final settlement of delay related claims
- Launch work with Swinerton on Surgery Build Out



QUESTIONS?

