

An aerial photograph of a city at night, with the city lights glowing against the dark landscape. The sky above is a mix of deep blues, purples, and oranges, suggesting a sunset or sunrise. The text is overlaid on the upper portion of the image.

Proposition G Projects Monthly Report August 2014

A photograph of a seagull in flight over a body of water. The bird is captured in mid-flight, with its wings spread wide. The water below is calm, creating a clear reflection of the bird. The sky is a soft, pale blue, suggesting a clear day. The overall composition is balanced and serene.

Reflection

- All anyone asks for is a chance to work with pride.
- Edward Deming



Overview

1. Major Monthly Events
2. Schedules
3. Project Status
4. Budgets
5. Looking Ahead



1. Major Monthly Events

1. Good construction progress on all projects; but delays on some issues within each project.
2. Regulatory compliance and infection control are in good shape.
3. Draft Invitation to Bid for Surgery Build Out prepared and submitted for Legal review.
4. Worst Case Cost Forecast updated for this report. Budget reconciliation to follow.

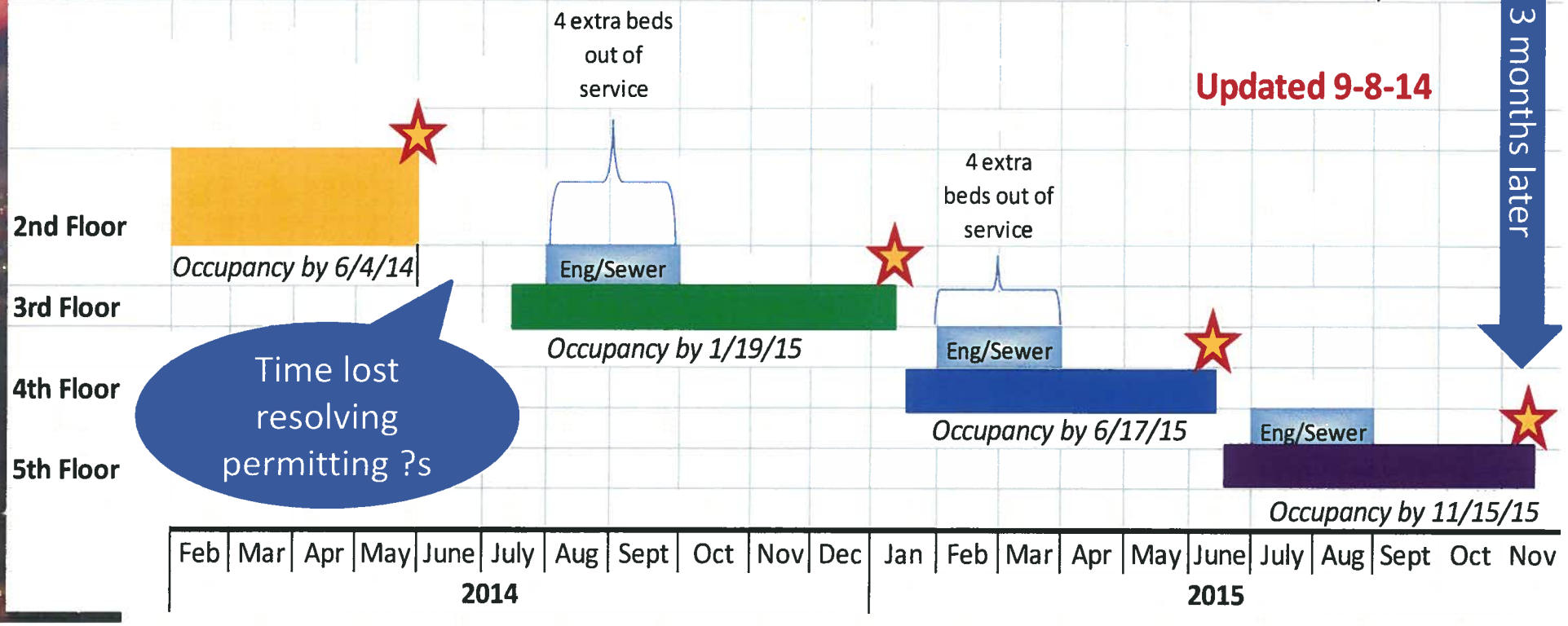
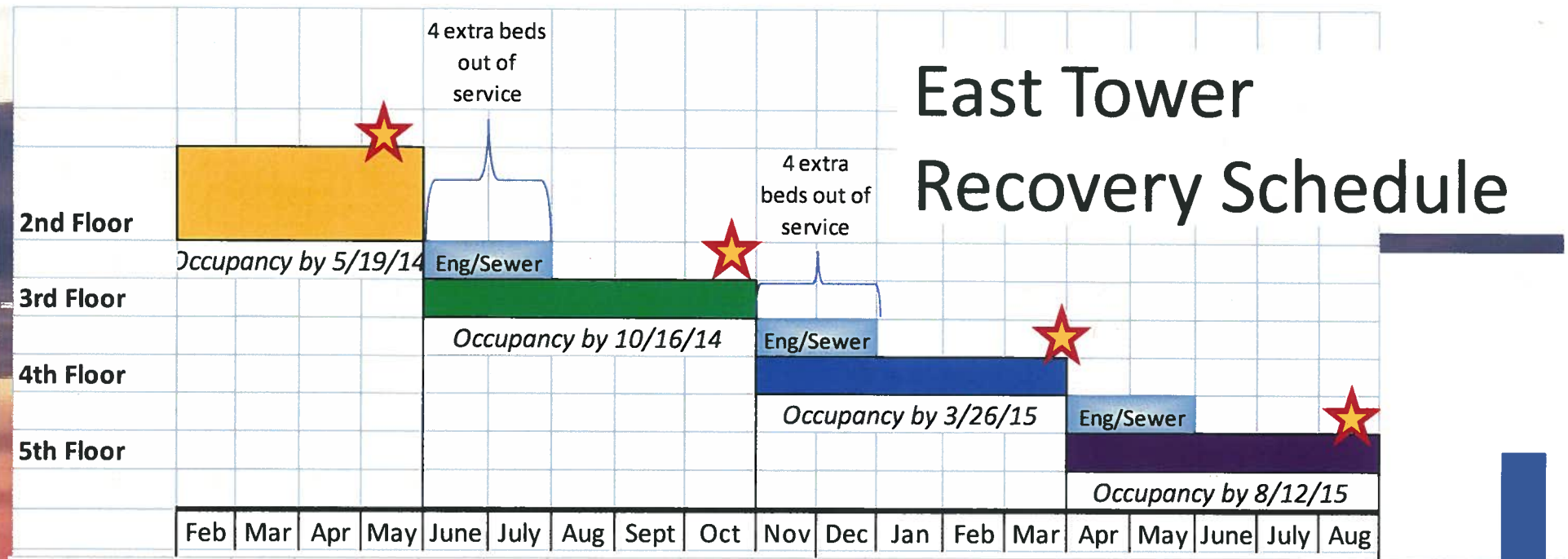
2. Schedules ... Overview

Updated 9-9-14

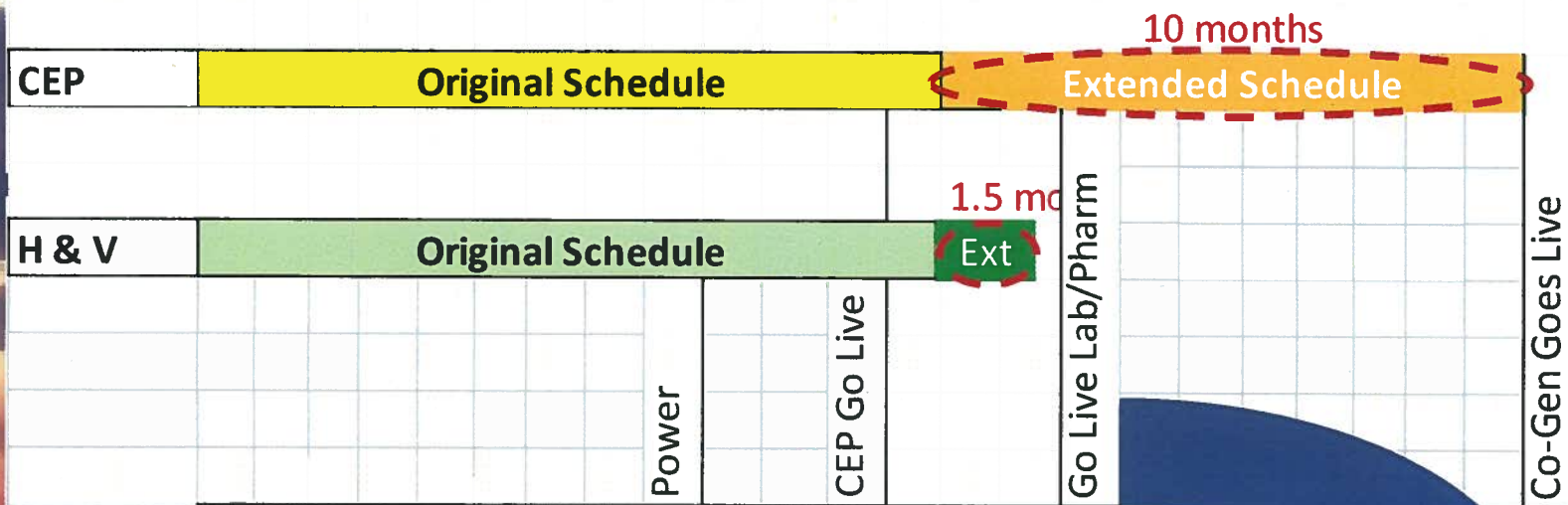
Projects	2014			2015				2016				2017				2018	
	Q2	Q3	Q4	Q1	Q2	Q3	Q4	Q1	Q2	Q3	Q4	Q1	Q2	Q3	Q4	Q1	Q2
CEP & Co-Generation	Construction																
E. Tower - All Floors	Construction																
Heart & Vascular w/ Level A & B	Construction																
H&V - Surgery Build Out																	
Prop G Scope						Construction					CDPD						
Sharp Scope						Construction											

Schedule Adjusted

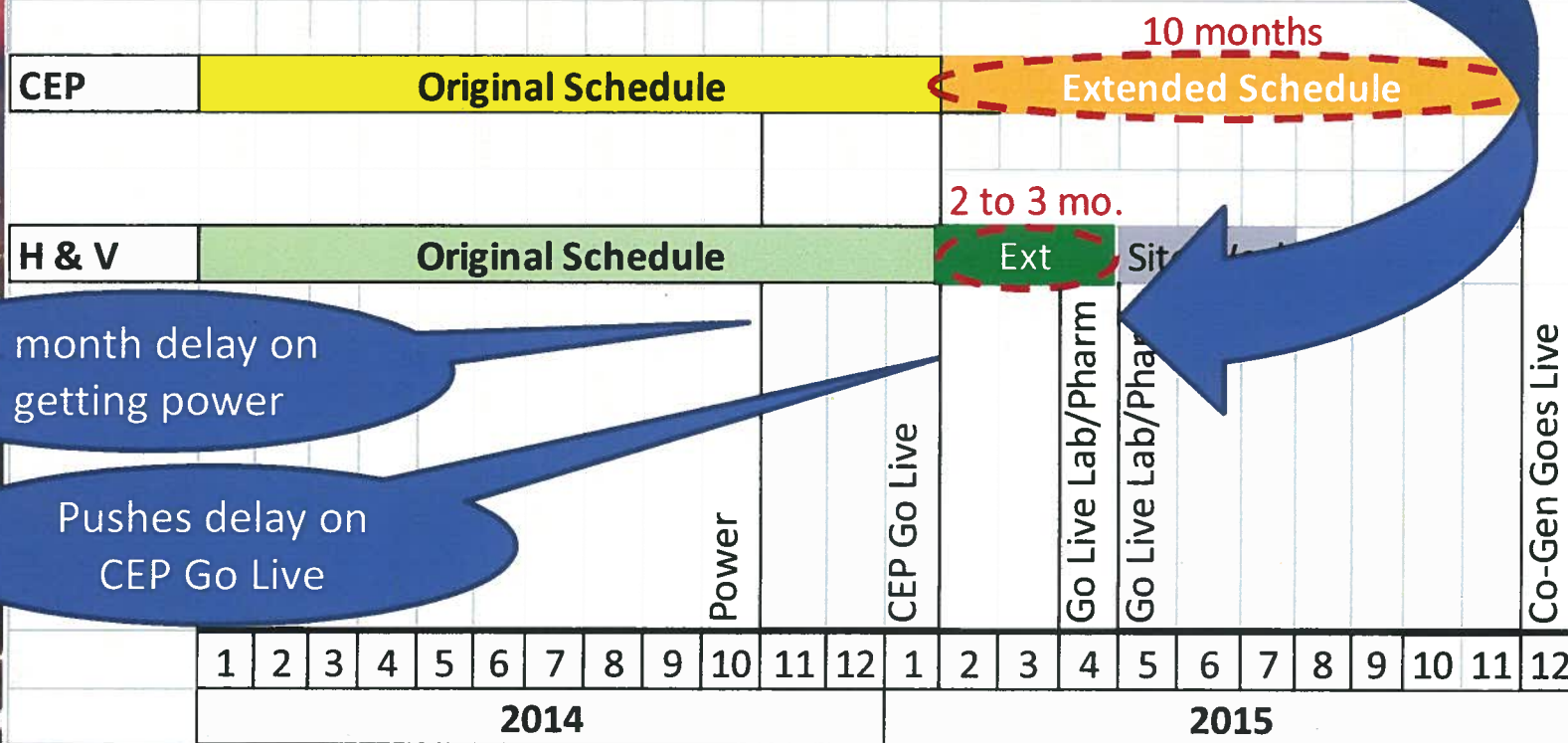
East Tower Recovery Schedule



Recovery Schedules - Updated 7/14

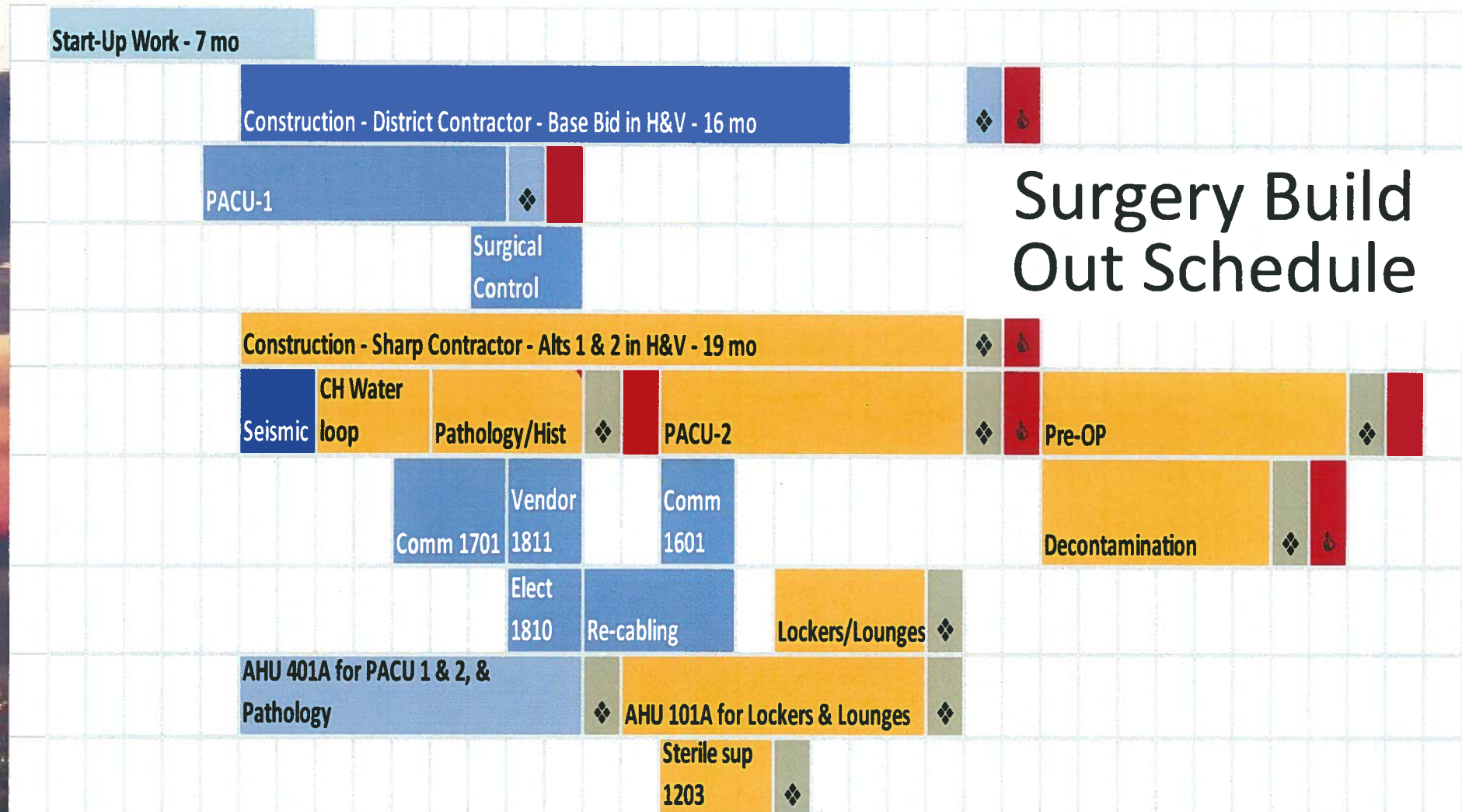


Recovery Schedules - Updated 9/14



1	2	3	4	5	6	7	8	9	10	11	12	1	2	3	4	5	6	7	8	9	10	11	12
2014												2015											

Surgery Build Out Schedule

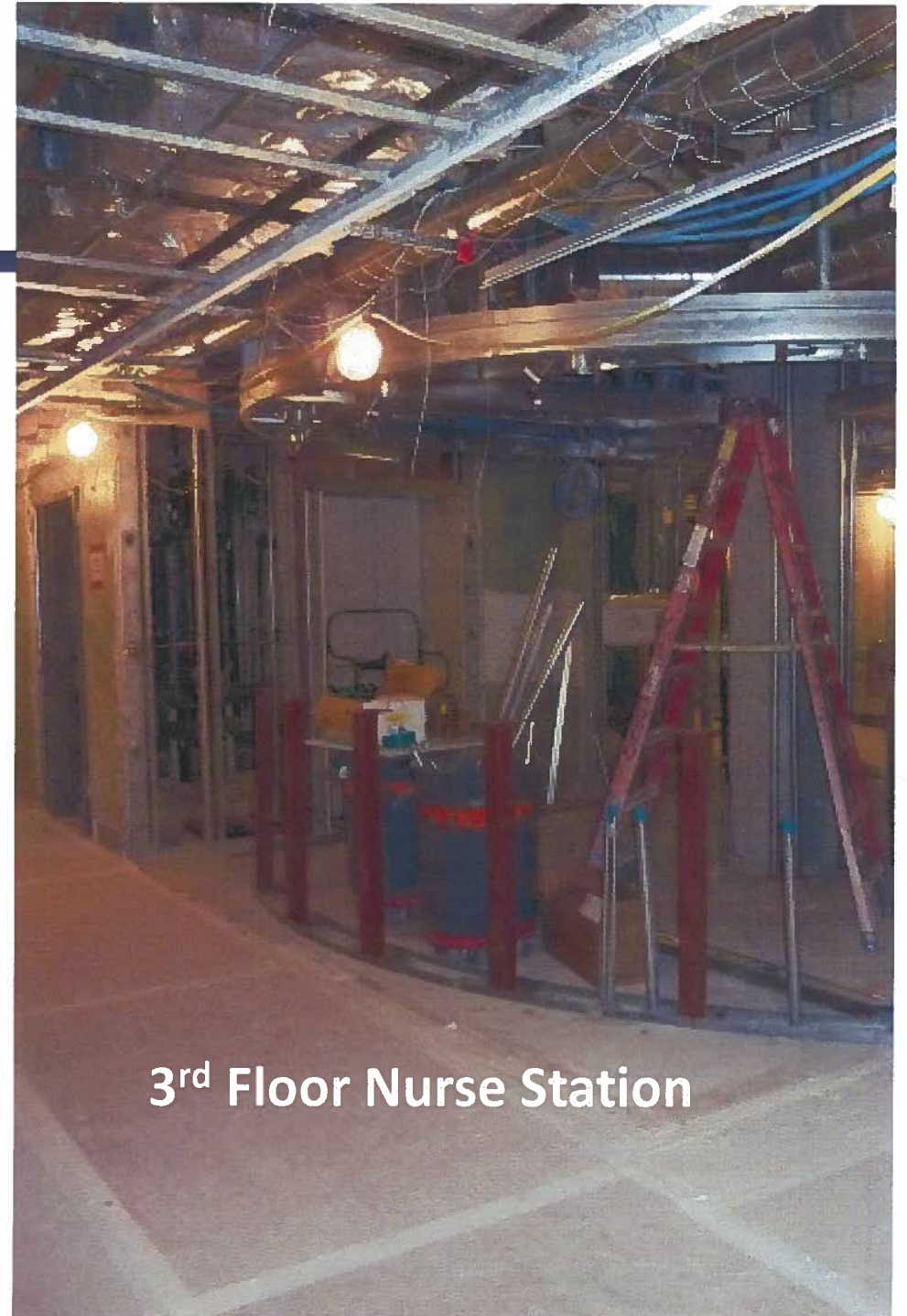


2015												2016												2017												2018		
M	A	M	J	J	A	S	O	N	D	J	F	M	A	M	J	J	A	S	O	N	D	J	F	M	A	M	J	J	A	S	O	N	D	J	F	M		

Legend: = District = Sharp ❖ = Occupancy / Licensing = Go Live Patient Care

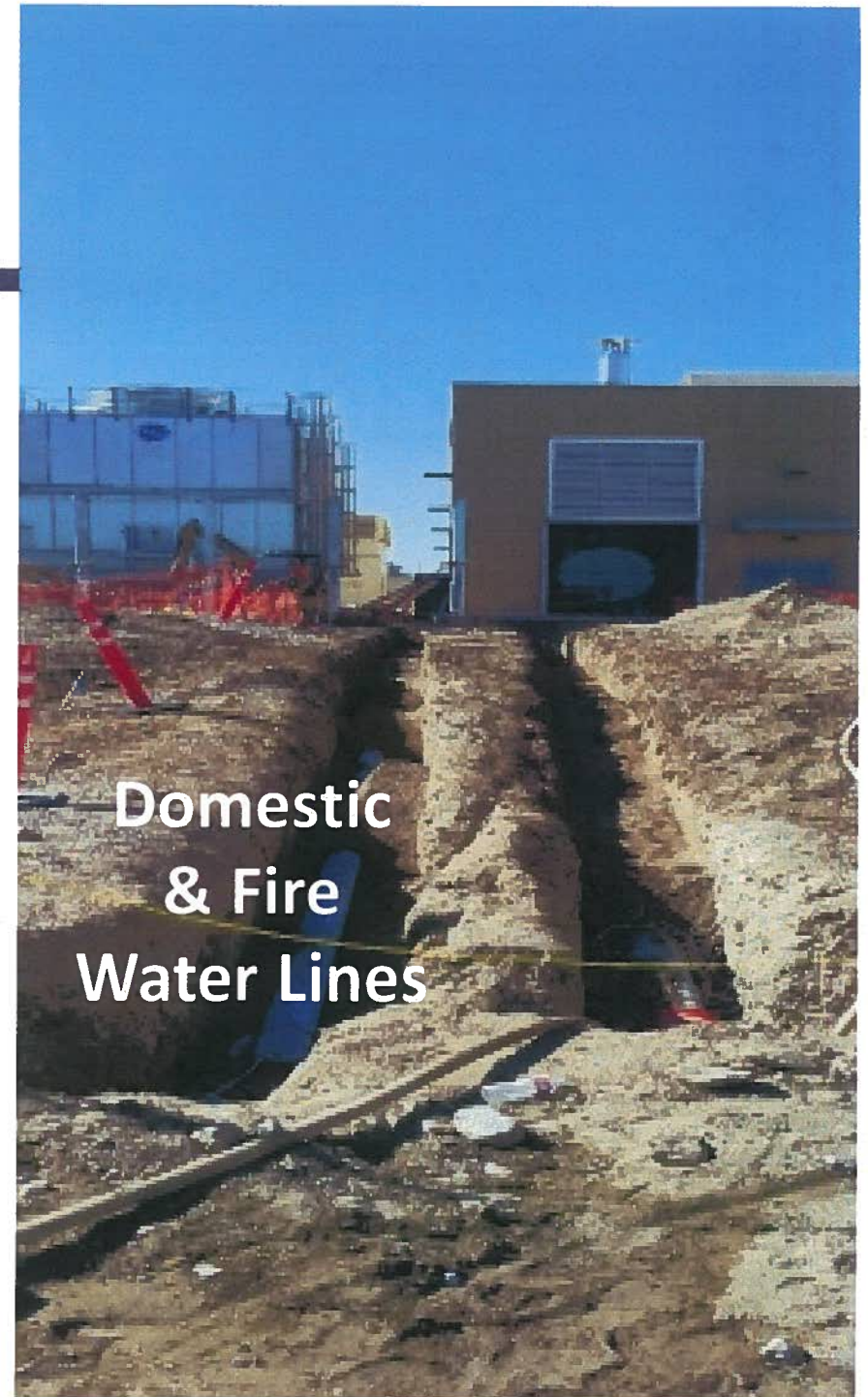
3. Project Status: East Tower

- Delayed access to the floor
- OSHPD debated ADA & permitting requirements for raising the toilet carriers
- Issues resolved; permit issued early September; but 6 to 8 weeks lost



3. Project Status: CEP

- Water lines installed
- Utility trellis in permit review
- Phasing plan developed for Commissioning the Co-Generation Plant
- Removal of existing cooling towers delayed. Engineering is poised to act as soon as weather allows.



3. Project Status: H&V

- Concrete 99% complete
- HVAC equipment installation started
- Fire proofing of steel in progress



H&V – Mock Up Progress

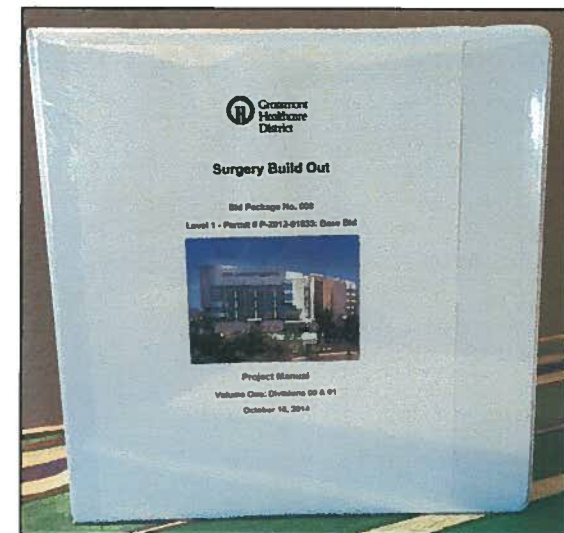
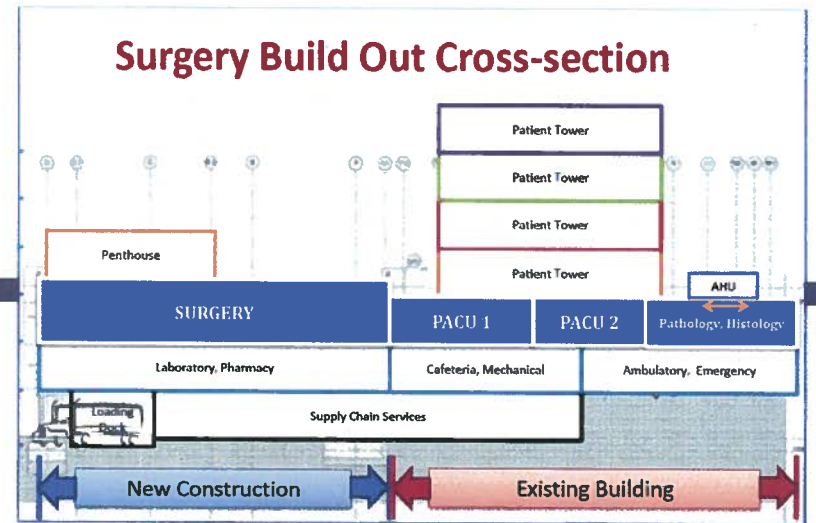


1. Install STOMAX Mesh & Gold Fill @ all joints & screws

2. Apply STOMAX Emerald coat

3. Project Status: Surgery Build Out

- Pre-Qualified Bidders
- Update Cost Estimate
 - District @ \$32M = **\$2.7M increase**
 - Sharp @ \$33M
- Prepared Draft Invitation to Bid
 - Under review with Legal
- Invitation to Bid to be released 10/10/14



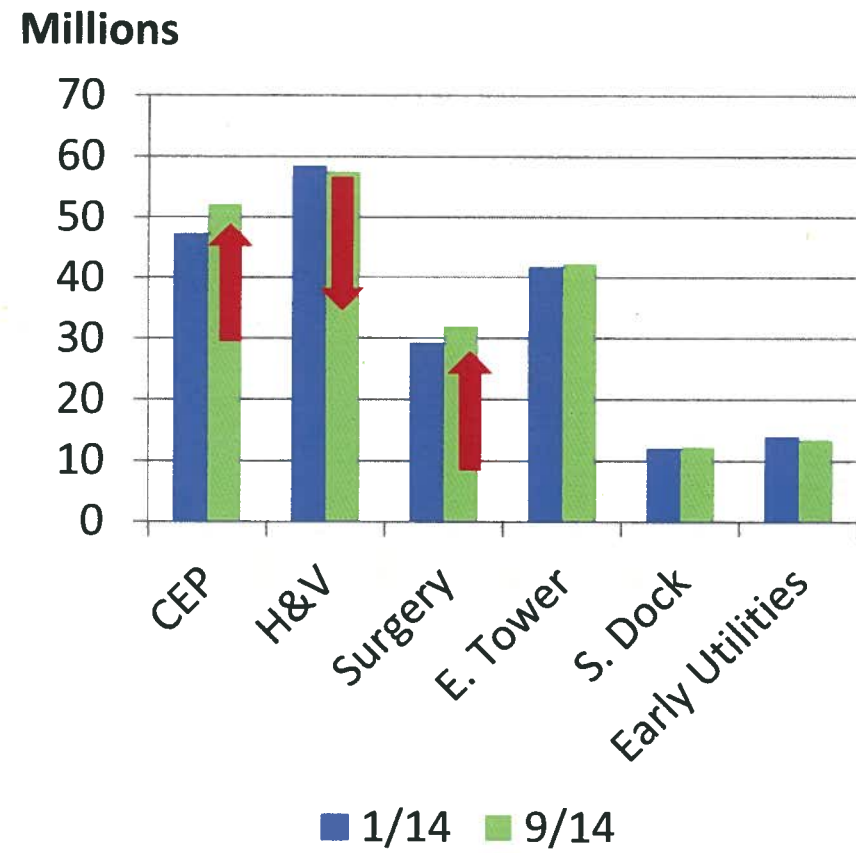
4. Budget

Updated Worst Case Forecast

- The Projects need another \$6.2M
- 4 drivers:
 - CEP increase of \$4.9M
 - Surgery increase of \$2.7M
 - Heart & Vascular decrease of (\$1M)
 - Other minor decreases of (\$0.4M)

$$\$4.9 + \$2.7 - \$1.4 = \$6.2$$

January Forecast vs.
September Forecast





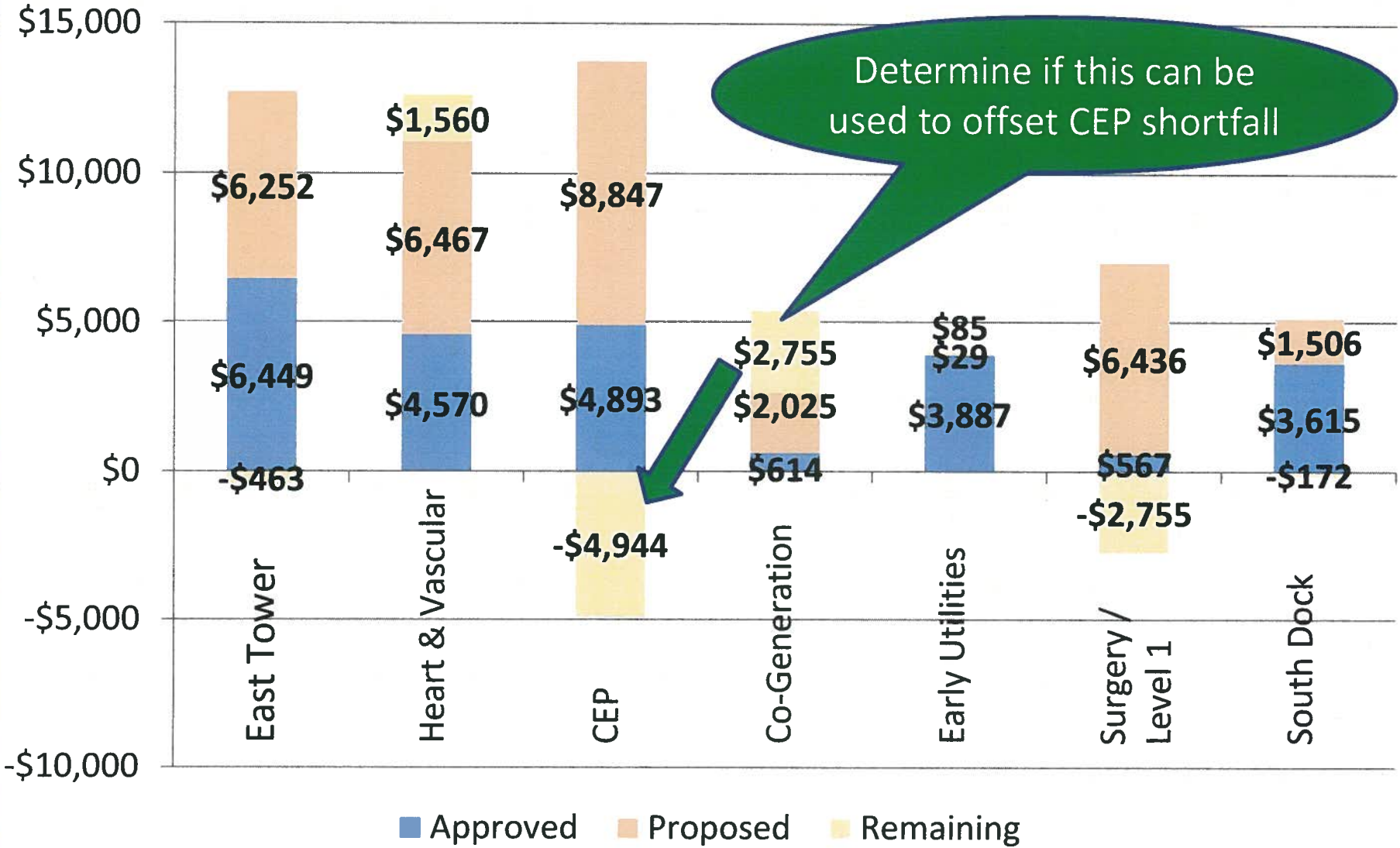
A Closer Look @ CEP

Why a \$4.9M increase since January?

- Out of 69 new PCOs & 10 items anticipated, the 6 Big ticket items are:
 - \$900K Temporary Generators for tie into HVSB
 - \$650K in additional structural anchorage
 - \$238K rework to meet Fire Rating requirements
 - \$550K in other existing CEP equipment safe off & control room fire alarm move requirements
 - \$1.4 M in Delay & Loss of Productivity from Berg & AO Reed
 - \$540K in Delay costs McCarthy
-

\$4.278M

4. Budgets: Status of Contingency Funds





5. Looking Ahead

- Respond to any appeals on Pre-Qualifications for Surgery Build Out
- Finalize Invitation to Bid for Surgery Build Out
- Continue coordination with Hospital on Surgery for:
 - Construction Phases and planning for each “empty chair”, and
 - Medical Equipment procurement
- Continue to work on final Co-Gen connection requirements with SDGE
- Coordinate with the Hospital the removal of the old equipment from the existing CEP
- Continue to process and resolve PCOs > 90 days old

Women's Center Remodel Progress Update

- 24 rooms
- 1st 5 rooms finish 9/22



New Wall
Mounted
Computer




New Wood Ceiling

New Paint



New Tile Walls
& Flooring



New Wardrobe

New Flooring

An aerial photograph of a city at night, with a vibrant sunset sky in shades of orange, red, and purple. The city lights are visible in the foreground and middle ground, creating a dense pattern of small, bright spots. The sky is filled with horizontal bands of color, suggesting a layer of clouds. The overall mood is serene and contemplative.

Questions?