

Grossmont Healthcare District



August 2018 Prop G Board Report

A photograph of an orca leaping from the water, captured in mid-air. The orca is black on top and white on the bottom, with a distinctive white patch near its eye. Its dorsal fin is visible, and it is surrounded by a large splash of white water. The background is a clear blue sky.

Reflection:

“Live as though life was created for
you.”

Maya Angelou

Overview



August 2018

1. Regulatory Compliance
2. H&V Level 1 Surgery Build Out
3. Schedule
4. Budget
5. Snapshot on Sharp HealthCare Infill Project
6. Looking Ahead



East Corridor: Floors waxed,
ready to get to work!

1. Regulatory Compliance

August 2018



Project	Safety Event	Infection Control Breach	Notice of Non-Compliance
Level 1 Surgery Build Out	0	0	0
Helix Waterline Replacement	0	0	0

2. H&V Level 1 Surgery Build Out

August 2018



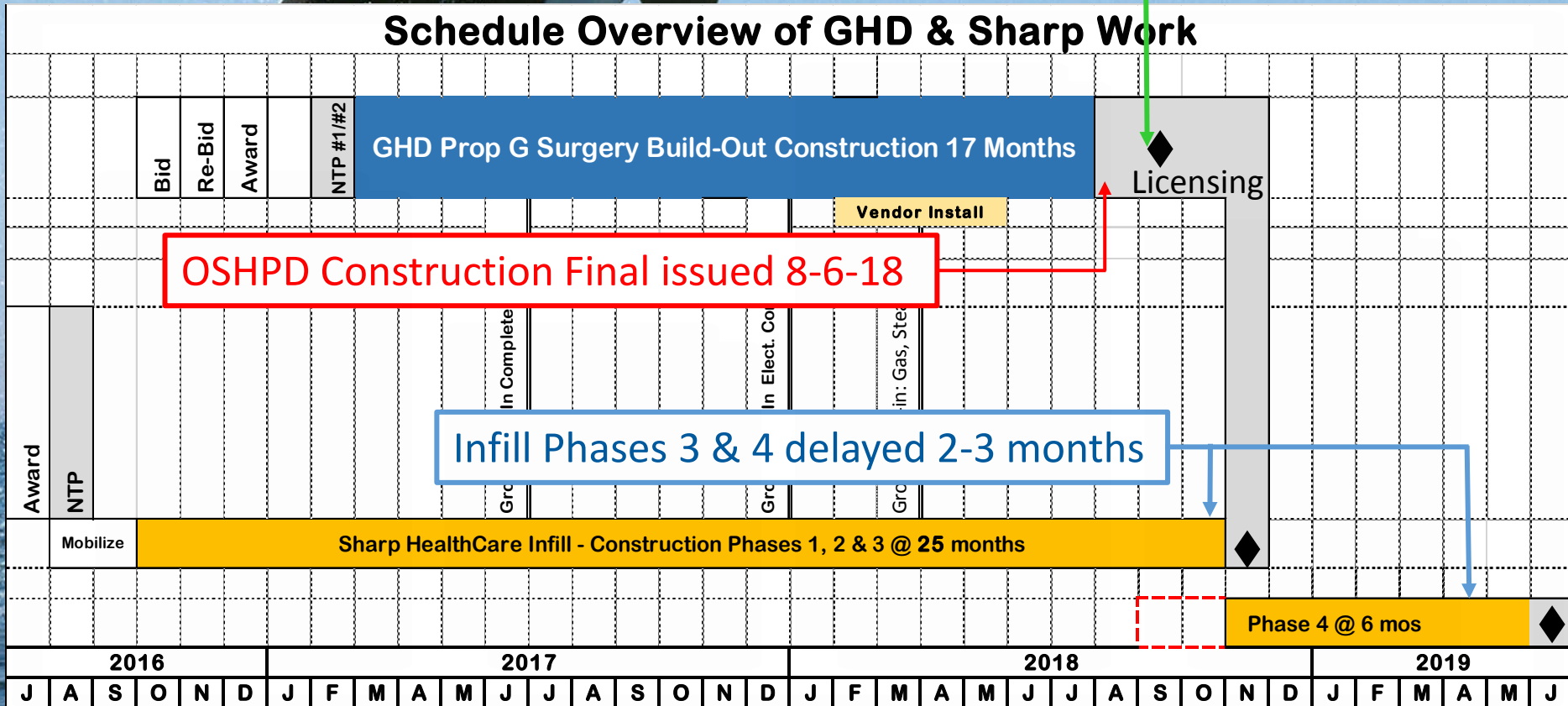
- Installation of Medical equipment is complete
- Commissioning is complete
- Schedule delays: 71 days approved; 49 additional days of delay requested by Swinerton Builders; 34.5 days recommended for approval
- Notice of Completion recorded August 8, 2018.
- Helix Waterline Replacement work:
 - Researching a shallower path of travel
 - HWD proposes to bid work to a short list of qualified bidders
 - Restart of work would likely be delayed to November, 2018, to accommodate a Planned Outage for the SDG&E Hospital service & to minimize risk of an unplanned outage
 - Once restarted, the work should be completed in approximately 6 weeks

3. Schedule: Prop G + Sharp Infill

August 2018

Ready for CDPH Licensing inspection on 9-4-18, before Infill Phase 3 is completed

Schedule Overview of GHD & Sharp Work



4. Budget

August 2018



Category	Project Name	Projected Cost At Completion (08/23/18)	Projected Cost At Completion (07/25/18)	Footnotes
Current Funds Available	Total Prop G Building Fund (Bond and Settlement Proceeds, Interest Earned, Grants, Etc.)	\$ 261,198,796	\$ 261,198,796	1
Projects Completed	Central Energy Plant, ED-CCU, Heart & Vascular Bldg, East Tower Renovation, Early Utilities	\$ 225,834,531	\$ 225,834,531	
	Remaining Prop G Building Funds	\$ 35,364,265	\$ 35,364,265	
Projects Under Construction	H&V Level 1 Surgery Floor Buildout	\$ 34,194,527	\$ 34,194,527	
	Forecast Potential Surplus	\$ 1,169,738	\$ 1,169,738	

Footnote:
1-Current funds Available includes interest/dividend earnings received for FY18 of \$216,253

5. Snapshot on Sharp HealthCare Infill Project

August 2018



- Ongoing utilities shutdown, “safe-off”, & misc. demo continues
- Start wall layout
- Experience Center work ongoing, with underground utilities installation, rough-in & concrete
- Complete H&V North Site work & compactor installation



Ongoing Safe-off & Electrical Demo



Install Wall Frame & Top-Down Drywall

6. Looking Ahead

August 2018



- Request inspection/licensing from CDPH in order to start utilizing the Build Out
- Finalize any Contractor claims
- Resolve action plan for the Helix Waterline replacement, including:
 - Finalize route
 - Helix Water District proposal to bid work to short-list of qualified Contractors
 - Coordinate start of work with Hospital & SDG&E



Questions?