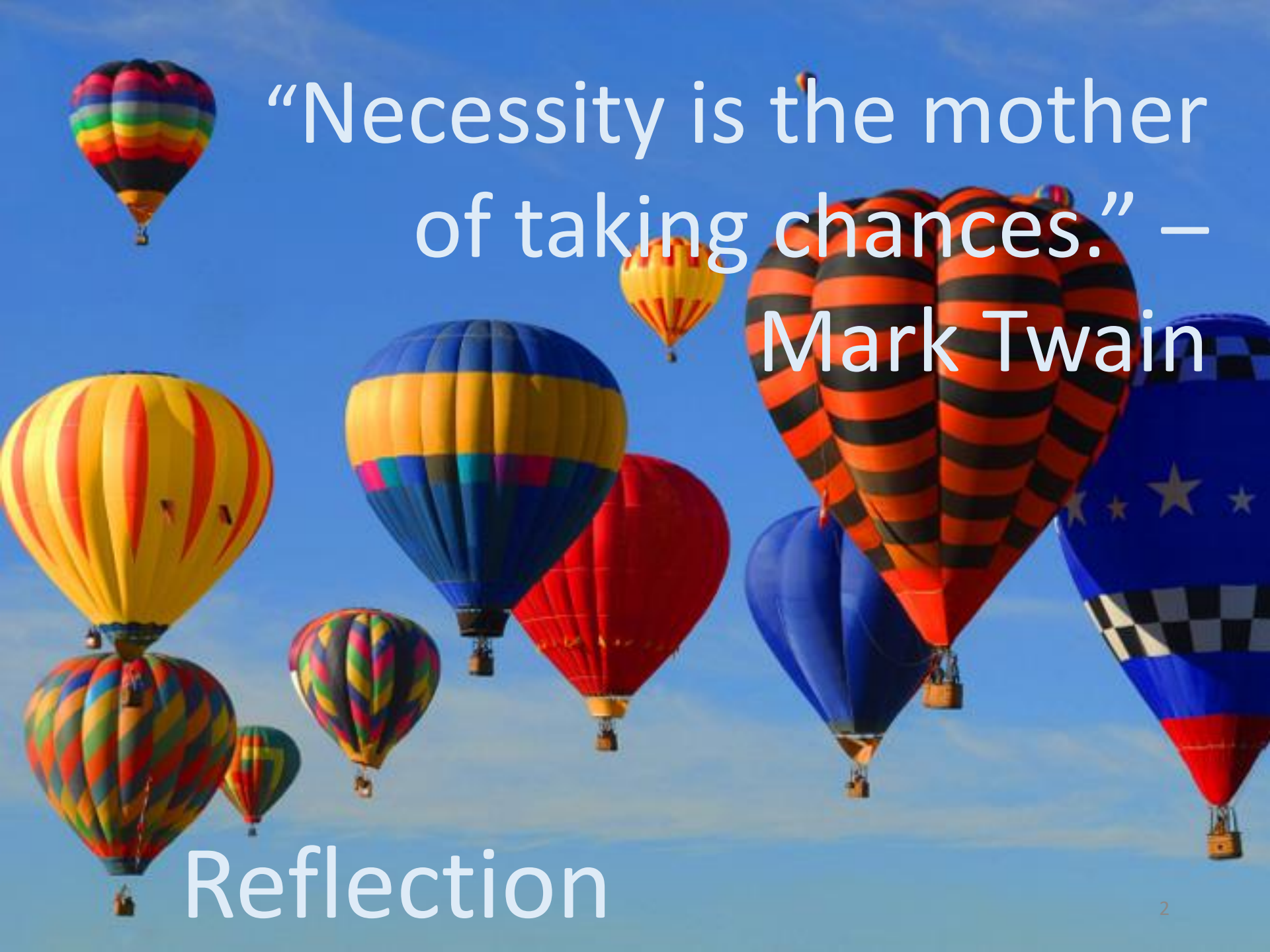




Grossmont Healthcare District

August 2017 Prop G Board Report



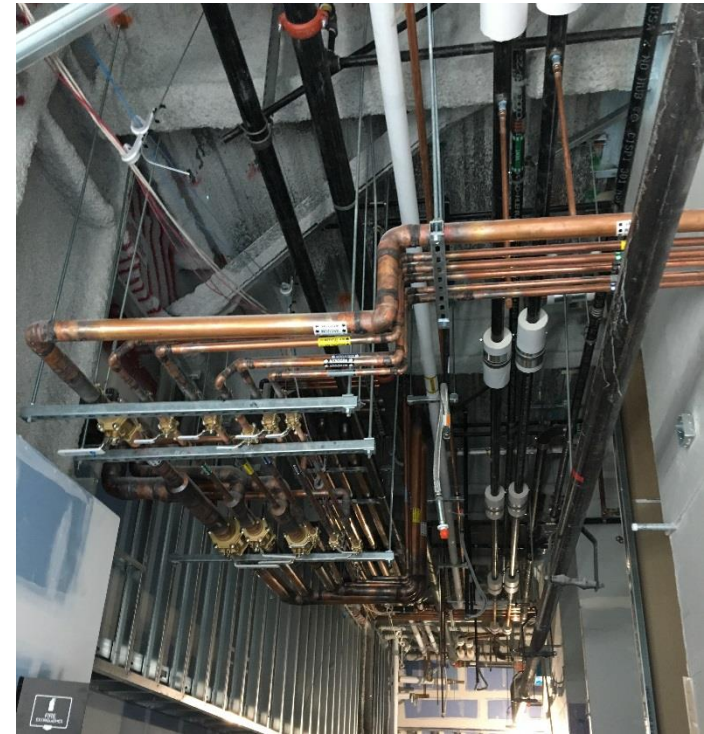
“Necessity is the mother
of taking chances.” –
Mark Twain

Reflection

Overview

August 2017

1. Regulatory Compliance
2. H&V Level 1 Surgery Build Out
3. Recap of what is being built:
 - i. OR Suite Overview
 - ii. The Open Heart OR
 - iii. Typical Hybrid OR
 - iv. Typical Cath Lab
4. Schedule
5. Budget
6. Snapshot on Sharp HealthCare Infill Project
7. Looking Ahead




Medical Gas Lines,
East Corridor

1. Regulatory Compliance

August 2017



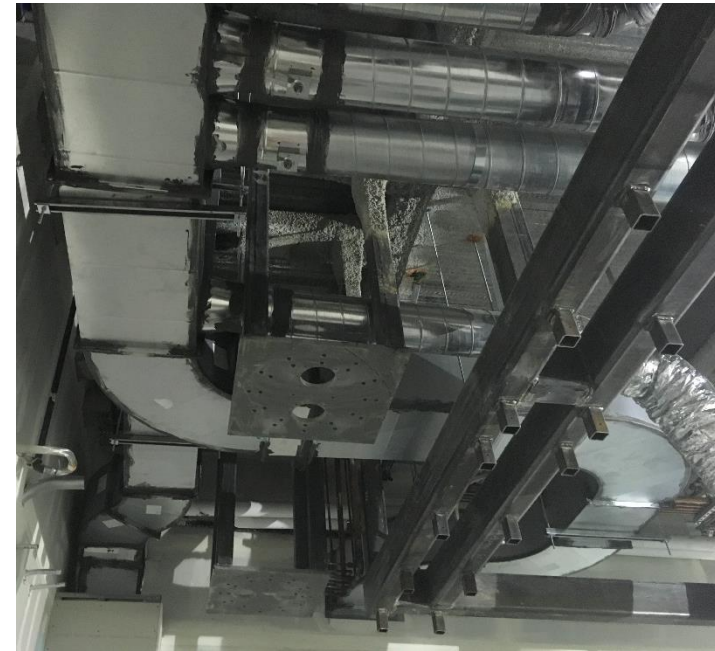
Cath Lab #1025:
Mechanical ductwork
installation in progress

Project	Safety Event	Infection Control Breach	Notice of Non-Compliance
Level 1 Surgery Build Out	0	0	0 

2. H&V Level 1 Surgery Build Out

August 2017

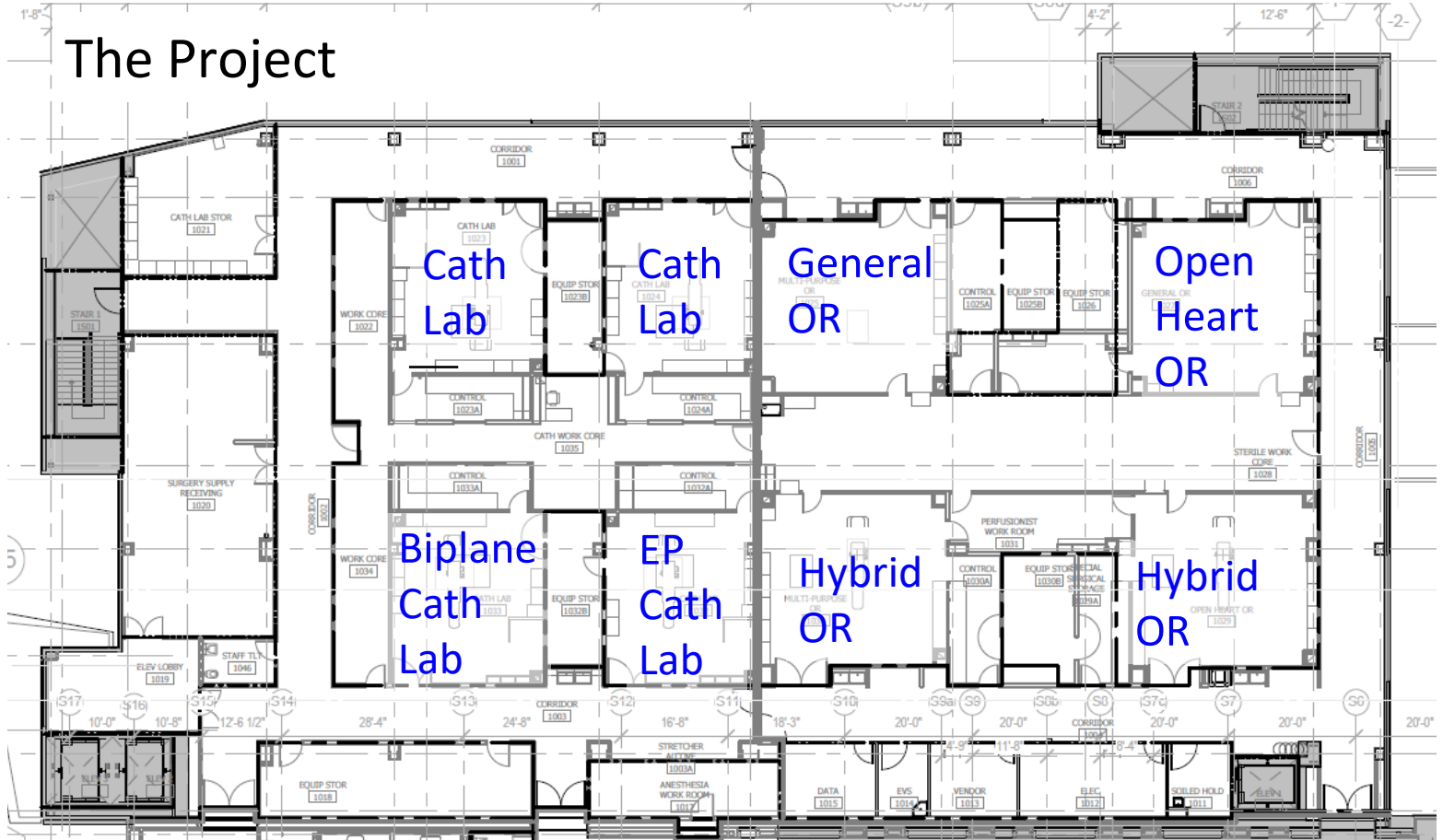
- Contractor advised schedule delays holding at 50 days; 31 have been formally accepted/incorporated into Change Orders. Any delay days beyond 50 will be mitigated by utilizing Owner 20 day float included in contract
- Top-down, second-side drywall installation complete in ORs, with all in-wall coordination issues resolved and work completed



Hybrid OR #1030: Mechanical ductwork installation in progress

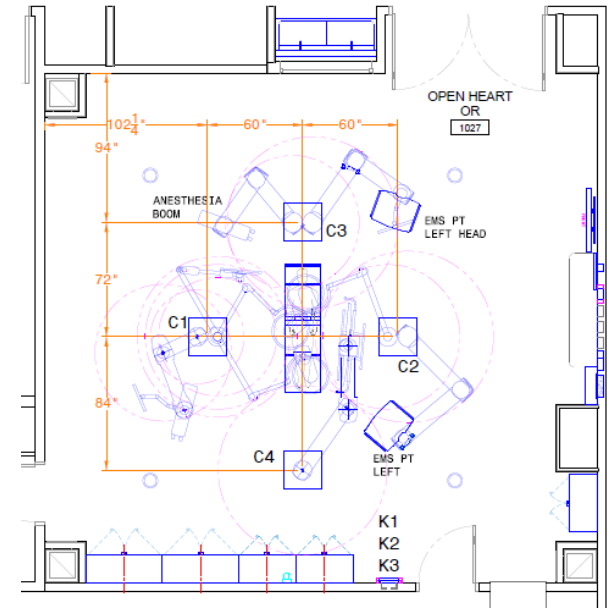
3i. OR Suite Overview

August 2017



3ii. Open Heart OR

August 2017

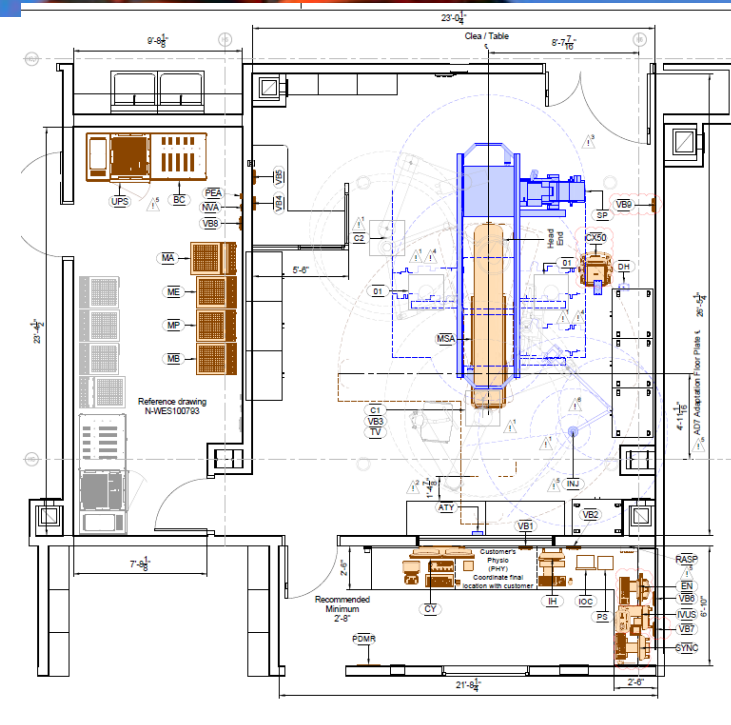
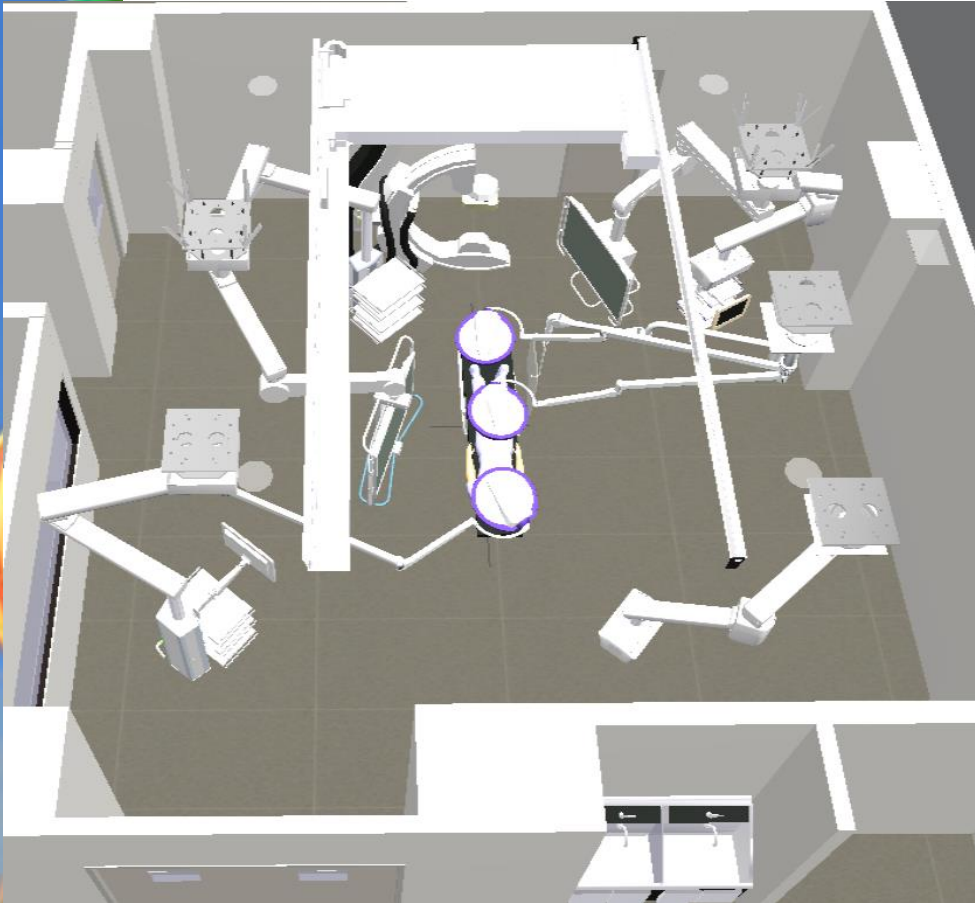


Boom Summary:

Head: tandem anesthesia supply head and equipment supply column. Patient right: perfusion supply head, dual surgical light and flat panel monitor. Patient left: tandem equipment supply column and single surgical light. Patient foot: large display monitor carrier. Note: Perfusion supply head and equipment supply columns have 27" monitor on GCX arms. Large wall display w/ monitoring

3iii. Typical Hybrid OR

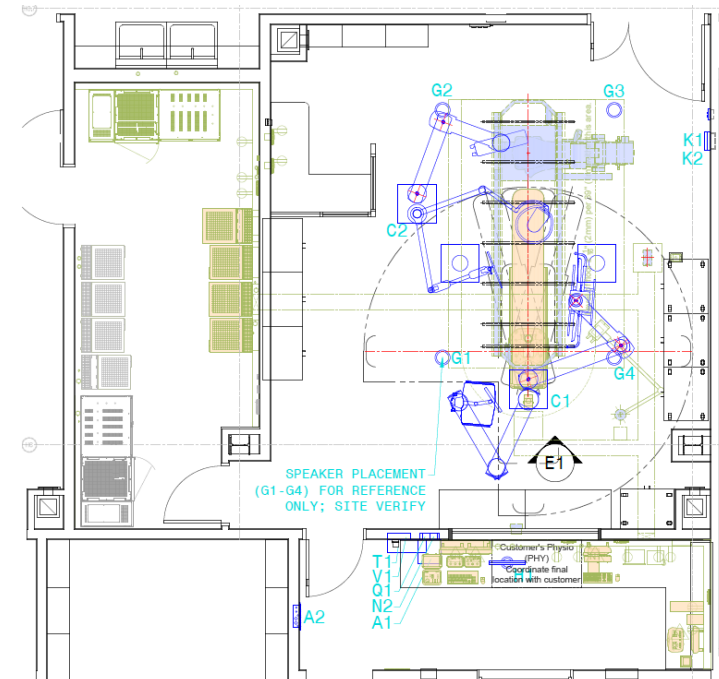
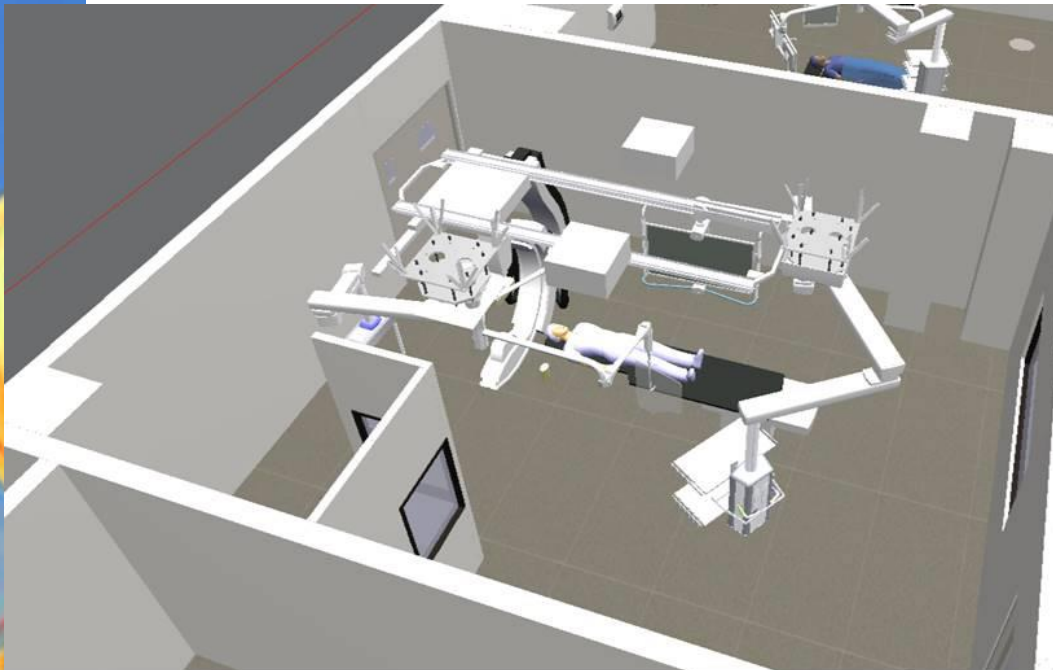
August 2017



Patient right head end: anesthesia supply head, Patient right: Tandem long arm surgical lights and Mavig radiation shield. Patient right foot end: Tandem large display monitor carrier (slave) and perfusion supply head. Patient left head end: Tandem equipment supply column and long arm surgical light. Patient left foot end: Tandem large display monitor (primary) and equipment supply column.

3iv. Typical Cath Lab

August 2017



Boom Summary:

Patient head(C2): anesthesia supply:, light head; shield. Patient foot(C1): Tandem Adjustable arm monitor carrier and single flat panel monitor.

Equipment: Philips Azurion 7 CT Scanner.

Overhead: In ceiling lights.

4. Schedule – Prop G

August 2017

We are here



																	Updated 8-23-2017						
Prop G Level 1 Surgery Build Out																					Licensing		
		Bid	Award	NTP #1/2	Construction													◆					
		N	D	J	F	M	A	M	J	J	A	S	O	N	D	J	F	M	A	M	J	J	
		2016		2017										2018									

5. Budget

August 2017

Category	Project Name	Projected Cost At Completion (08/23/17)	Projected Cost At Completion (07/26/17)
Funds Available	Total Prop G Building Fund (Bond Proceeds, Interest Earned, Grants, Etc.)	\$257,072,011	\$257,072,011
Projects Completed	Central Energy Plant, ED-CCU, Heart & Vascular Bldg, East Tower Renovation, Early Utilities	\$225,996,922	\$225,996,922
	Remaining Prop G Building Funds before Level 1 Surgery	\$31,075,089	\$31,075,089
Projects Under Construction	H&V Level 1 Surgery Floor Buildout	\$29,533,684	\$29,533,684
	Potential Surplus	\$1,541,405	\$1,541,405

6. Snapshot on Sharp HealthCare Infill Project

August 2017

- Level B Sterile Processing Department to be ready for occupancy late August.
- Level B Deionized water to be complete late September
- Phase 2 construction underway



IS equipment installation in Grossing Lab



Level B Sterile Processing Reverse Osmosis/Deionized System Installation

7. Looking Ahead

August 2017

- Continue Installation of Overhead Ductwork
- Continue rough-in of Overhead Low Voltage/Nurse Call/Fire Alarm
- Continue Installation of Overhead Unistrut in ORs
- Users site tour scheduled for September 5th
- Group Two Utilities Tie-In with Sharp Infill scheduled for late September
- Self-Generation Incentive Program (SGIP) Inspection Complete – Waiting Finalization from State



Questions?