



GROSSMONT HEALTHCARE DISTRICT PROPOSITION G DESIGN & CONSTRUCTION SERVICES

*Monthly Project Construction Report
For the month of _____*

Project: _____

Updated: _____

Contractor: _____

Architect: _____

CEP Construction Budget Status	\$	Work In Place % Complete	Schedule Status	
Award Amount:			Contract Award:	
			Executed Contract:	
Approved CO's:			Original Completion:	
			Duration % Complete:	
Revised Contract:			Approved Time Extension:	
Invoiced to Date:			New Completion:	
Balance			Project Scheduled Variance:	
Total Forecast Pending CO's:			Forecast Completion:	
Forecast Adjusted Budget			% Complete per forecast:	

RISK STATUS	Budget:	Schedule:
--------------------	---------	-----------

COGEN Construction Budget Status	\$	Work In Place % Complete	Schedule Status	
Award Amount:			Contract Award:	
			Executed Contract:	
Approved CO's:			Original Completion:	
			Duration % Complete:	
Revised Contract:			Approved Time Extension:	
Invoiced to Date:			New Completion:	
Balance			Project Scheduled Variance:	
Total Forecast Pending CO's:			Forecast Completion:	
Forecast Adjusted Budget			% Complete per forecast:	

RISK STATUS	Budget:	Schedule:
--------------------	---------	-----------

Incident Dashboard

Month	Safety - CAL OSHA Incident		Regulatory Compliance / OSHPD (Notice of Non-Compliance)		Infection Control Breach	
	Yes	No	Yes	No	Yes	No
January						
February						
March						
April						
May						
June						
July						
August						
September						
October						
November						
December						
Total						



**GROSSMONT HEALTHCARE DISTRICT
PROPOSITION G
DESIGN & CONSTRUCTION SERVICES**

*Monthly Project Construction Report- August 2016
Central Energy Plant*

Safety –CAL OSHA:

- There were no reportable incidents in August.

Regulatory Compliance/OSHPD (Notice of Non-Compliance):

- There were no reportable incidents in August.

Infection Control Issues/Status:

- Infection control barriers are in place and in compliance.

Overall Progress:

(Interior)

- Soft water make up water for the surge tank and 950T steam chiller is looking to start next month.
- Contractor punch list is on-going.

(Exterior)

- Roofing repairs have been identified and repaired.

Existing Central Utility Plant (CUP);

- The Prop G portion of the demolition is nearly complete. The hospital portion of the demolition is just getting started. Chiller #4 from the existing CUP was removed mid-August.
- All four cooling towers have been removed. The concrete curbs are in the process of demolition at this time.
- Chilled water piping on the exterior of the CUP was demolished in early August.
- The O2 tank and vaporizers have been set and anchored, however interconnect piping has not started.

.COGEN Status:

- The turbine lube oil pump uninterrupted power supply (UPS) will be installed by the end of August and will allow the system to be black started without lube oil pressure. The Turbine shutdown to allow this installation is 8/27/16.



GROSSMONT HEALTHCARE DISTRICT PROPOSITION G DESIGN & CONSTRUCTION SERVICES

Construction Status Photos:



New O2 tanks, vaporizers, and SS for louver wall



Medical gas and soft water lines being installed



Lube Oil UPS

Design Issues:

- Closeout of EUP, Emergency Boiler, and Emergency Gas Line Replacement are all nearly complete. This will help us move forward with the close out of CEP when we get there.
- Soft water makeup line to 950T chiller and Surge tank.
- Supplemental steel changes for existing CUP.

Construction Issues:

- Interconnect piping between medical gas equipment has not started.
- SS supports for louver wall at O2 yard will need repairs.

Prepared By: Nick Aden



GROSSMONT HEALTHCARE DISTRICT PROPOSITION G DESIGN & CONSTRUCTION SERVICES

*Monthly Project Construction Report
For the month of _____*

Project: _____

Updated: _____

Contractor: _____

Architect: _____

Construction Budget Status	\$	Work In Place % Complete	Schedule Status	
Award Amount:			Contract Award:	
			Executed Contract:	
Approved CO's:			Original Completion:	
			Duration % Complete:	
Revised Contract:			Approved Time Extension:	
Invoiced to Date:			New Completion:	
Balance			Project Scheduled Variance:	
Total Forecast Pending CO's:			Forecast Completion:	
Forecast Adjusted Budget			% Complete per forecast:	

RISK STATUS	Budget: _____	Schedule: _____
--------------------	---------------	-----------------

Incident Dashboard						
Month	Safety - CAL OSHA Incident		Regulatory Compliance / OSHPD (Notice of Non-Compliance)		Infection Control Breach	
	Yes	No	Yes	No	Yes	No
January						
February						
March						
April						
May						
June						
July						
August						
September						
October						
November						
December						
Total						



**GROSSMONT HEALTHCARE DISTRICT
PROPOSITION G
DESIGN & CONSTRUCTION SERVICES**

Monthly Project Construction Report – August 2016

Safety- CAL OSHA:

- There have been no reportable incidents in August.

Regulatory Compliance/OSHPD (Notice of Non-Compliance):

- There have been no reportable incidents in August.

Infection Control Issues/Status:

- Infection control barriers are in place and in compliance for August.

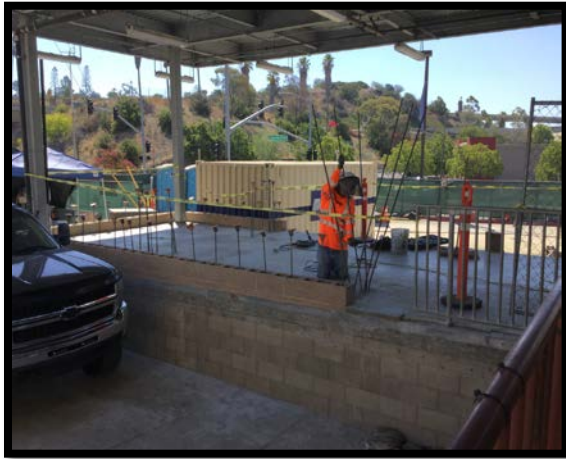
Overall Progress:

- Level B Phase 2 EVS closet, card access, above ceiling and HVAC work is completed. The final corrective punch list items for all 3 passenger elevators are complete pending final walkthrough. All non-conforming dumbwaiter punch list items have been corrected.
- Level 1 will be signed off at project completion.
- Interim Air Handler (IAH1) and associated duct work has been removed. The new plaster ceiling is currently being installed. North decorative colored paving has been completed.
- Phase 3 work of the north site underground Women's Center steam line tie-in is complete. The South Loading Dock CMU wall is in process of being completed. Plumbing drain lines and footing installation is complete. The Helix Water line route has been excavated and the 10" pipe is in process of being laid.
- Commissioning activities are near completion. McCarthy and their subcontractors are working on completing the minor remaining items that are part of Phase 2. As-builts, most attic stock supplies and keys have been turned over to Hospital site operations. Warranty turnovers are currently in process.



GROSSMONT HEALTHCARE DISTRICT PROPOSITION G DESIGN & CONSTRUCTION SERVICES

Construction Status Photos:



South Loading Dock CMU Wall Install Prep



Helix Water Line Excavation



H&V North Hardscape Pour



H&V North IAHU1 Ceiling Soffit Work



North UG Steam Line Tie-In and Backfill



**GROSSMONT HEALTHCARE DISTRICT
PROPOSITION G
DESIGN & CONSTRUCTION SERVICES**

Design Issues:

- Exhaust Fan #7 Inlet is not providing required air to meet design readings.

Construction Issues:

- n/a

Corrective Action Plan (*when applicable*):

- Design:
 - The Mechanical Engineer (Randal Lamb) is working with McCarthy to come up with a solution with upsizing the Exhaust Fan #7 Inlet to the maximum size to allow for maximum capacity air flow.
- Construction: n/a

Prepared By: Gary Kiebel / Kevin Herr / Vicki Townsend