

Healthcare District



March 2018 Prop G Board Report

Reflection:



“Fall 7 times. Stand up 8.”

Japanese proverb

Overview

1. Regulatory Compliance
2. H&V Level 1 Surgery Build Out
3. The plans:
 - i. Surgery Suite Overview
 - ii. OR #1025 Complete
 - iii. OR #1027 Complete
 - iv. Equipment Install, OR #1030
 - v. Equipment Install, OR #1029
4. Schedule
5. Budget
6. Snapshot on Sharp HealthCare Infill Project
7. Looking Ahead



Cath Lab #1024:
Punch list inspection prior to
medical equipment installation

1. Regulatory Compliance



North Corridor #1003:
Team: Harold Davis, Liz
Hawkins, Greg McFaul

Project	Safety Event	Infection Control Breach	Notice of Non-Compliance
Level 1 Surgery Build Out	0	0	5

As of 2-22-18 **seven** mechanical subcontract issues had been escalated to NNC's, and **two** have been resolved. Swinerton is working with the subcontractors to correct these minor items.

2. H&V Level 1 Surgery Build Out

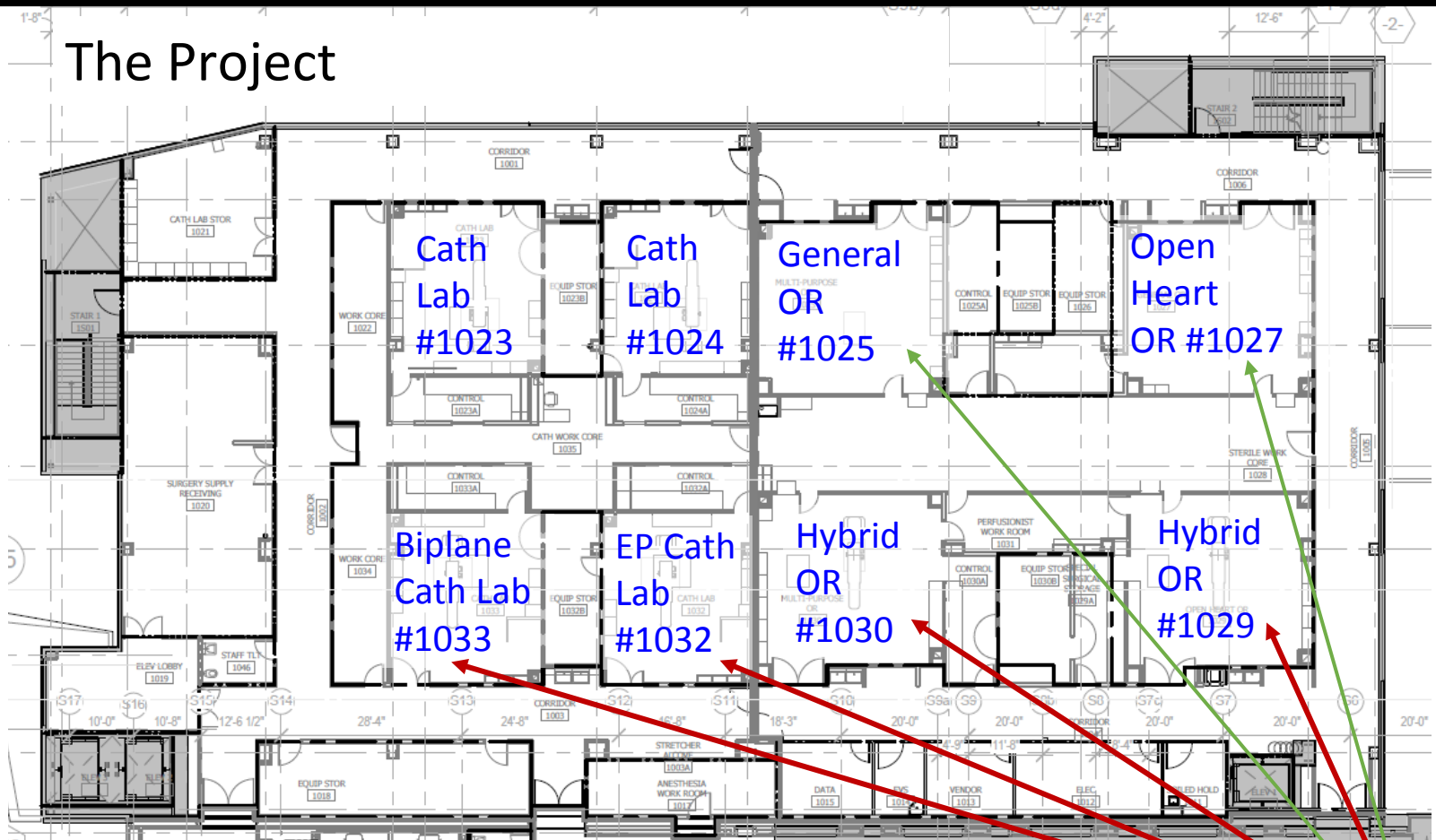
- Medical equipment installation complete in ORs #1025 & #1027; in progress in ORs #1029 & #1030; Cath Labs #1032 & #1033
- Medical equipment scheduled for installation in Cath Labs #1023 & #1024 starting 3/23
- AE formal punch list of the South ORs complete; underway in North Cath Labs
- Schedule delays: 65 days approved to date
- Schedule impact: New info received following 3-26 GO Bond meeting: Philips medical equipment installation completion delayed 3 weeks, delaying project completion 2 weeks
- Due to mechanical installation issues, commissioning the system may add more time to the schedule



South Corridor: Lights installed; bracing ready for T-Bar grid supports

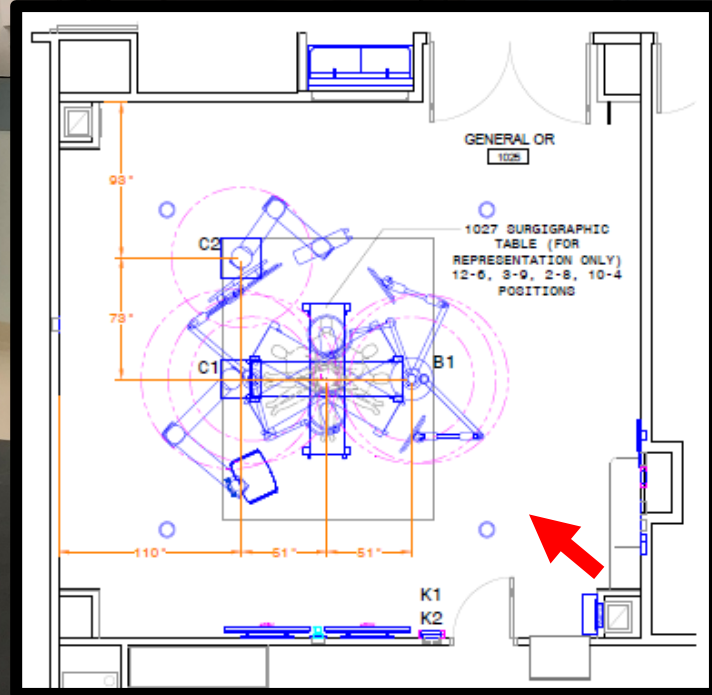
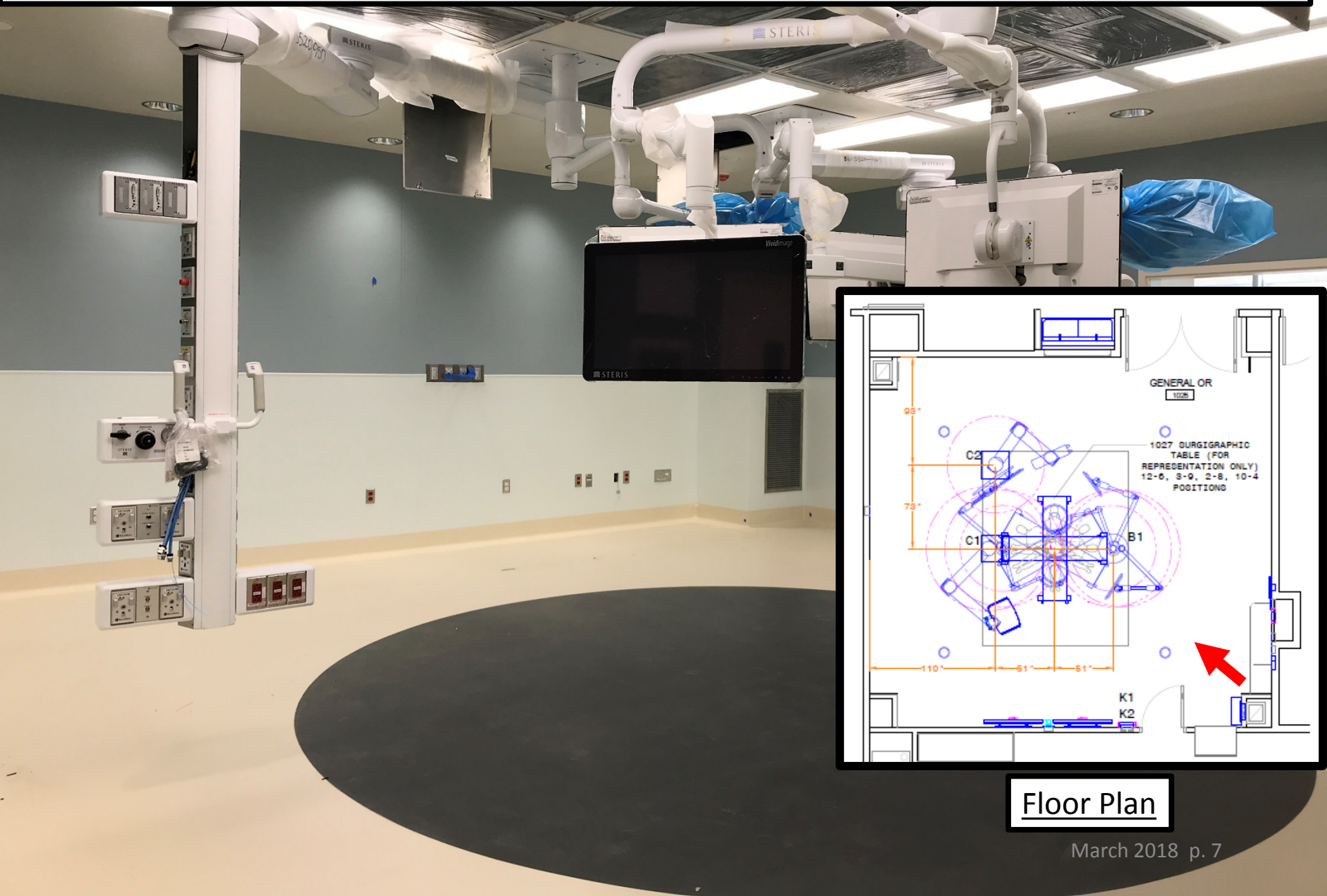
3i. Surgery Suite Overview Plan:

The Project



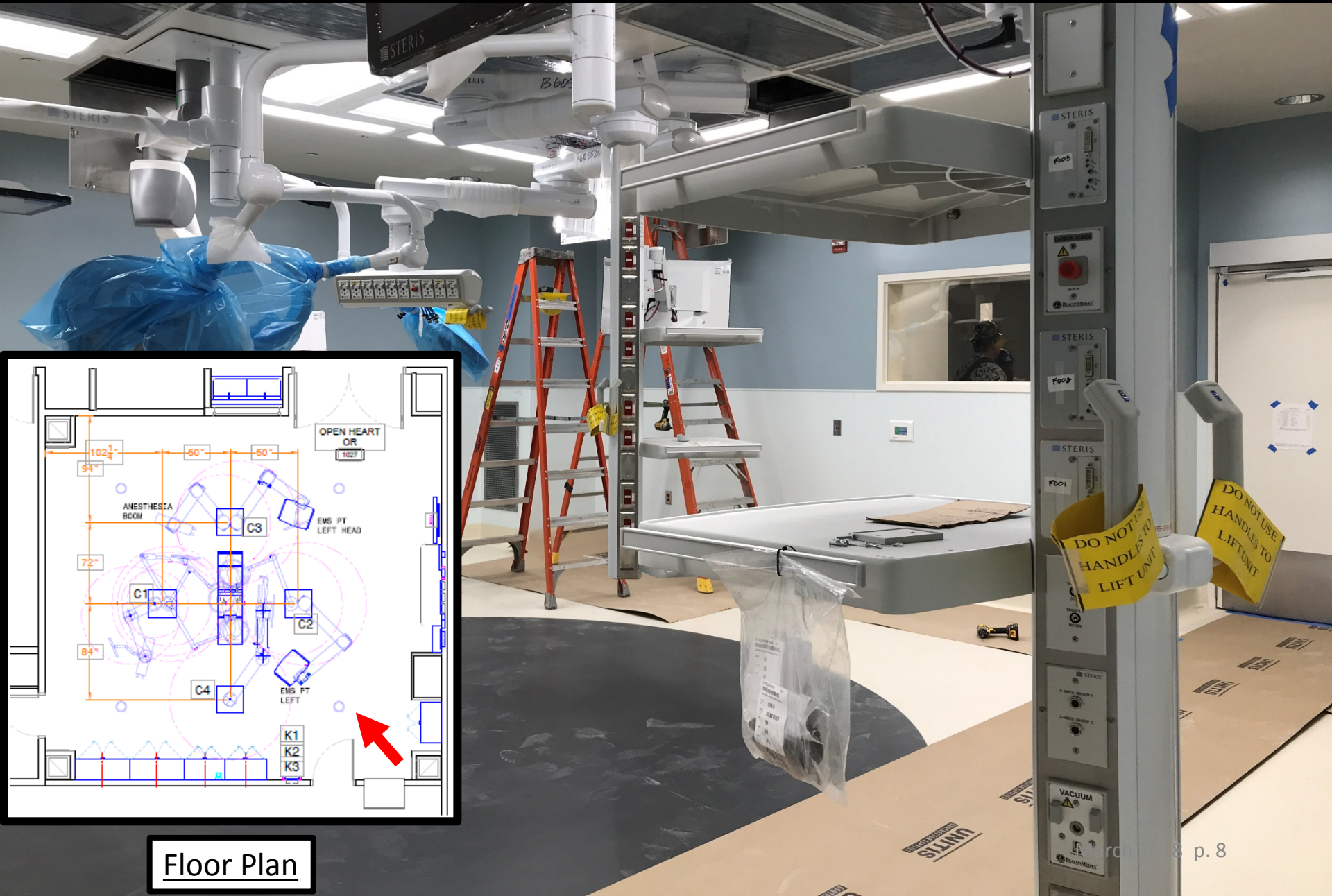
Medical equipment installation in progress in ORs #1029, #1030;
Cath Labs #1032 & #1033; Complete in ORs #1025 & #1027

3ii. Equipment Install Complete, OR #1025:



Floor Plan

3iii. Equipment Install Complete, OR #1027:



Floor Plan

5. Budget

Category	Project Name	Projected Cost At Completion (03/21/18)	Projected Cost At Completion (02/22/18)	Footnotes
Current Funds Available	Total Prop G Building Fund (Bond and Settlement Proceeds, Interest Earned, Grants, Etc.)	\$ 260,772,011	\$ 260,772,011	1,4
Projects Completed	Central Energy Plant, ED-CCU, Heart & Vascular Bldg, East Tower Renovation, Early Utilities	\$ 225,834,531	\$ 225,834,531	
	Remaining Prop G Building Funds before Level 1 Surgery	\$ 34,937,480	\$ 34,937,480	
Projects Under Construction	H&V Level 1 Surgery Floor Buildout	\$ 34,194,527	\$ 31,093,063	2,3
	Forecast Potential Surplus	\$ 742,953	\$ 3,844,417	

Footnotes:

1- Current Funds Available include \$3.7M of 2016 Settlement Proceeds

2- Current Projected Cost includes BM#381 additional Sharp equipment reimbursement of approx \$3M

3- Current Projected Cost includes \$1,014,356 of legal expenses for reimbursement to GHD

4-Current Funds Available does NOT yet include interest received FY 16-17 of \$210,532

6. Snapshot on Sharp HealthCare Infill Project

- Complete ceiling grid & light install in new PACUs & Sterile Storage
- Complete headwall install in new PACU 1 & 2
- Ongoing overhead utilities installation in Phase 2
- Start flooring installation & wall protection in new PACU areas
- Start casework installation, Phase 2
- Complete Med. Gas system shut down & transducer install



Install Floor & Wall Protection



Central Nurse Control Station Casework Install

7. Looking Ahead

- Install T-Bar ceilings in perimeter corridors
- Work with Helix Water District to finalize a different installation location for the replacement line
- Complete installation of medical equipment in ORs #1029 & #1030; Cath Labs #1032, #1033 (now projected into mid-May)
- Start installation of medical equipment in Cath Labs #1023, #1024
- Work on construction completion (Punch) lists



Questions?